



CRAWLER CRANE

XTC160



160t



65m



62m

Company profile

XCMG Hoisting Machinery is one of the core business divisions of Xuzhou Construction Machinery Group Co., Ltd. It is a pioneer, leader and developer of China's hoisting machinery, specializing in R&D and manufacturing of mobile cranes. With technological innovation as its core driving force, XCMG Hoisting Machinery is committed to delivering digital, intelligent and integrated solutions to promote healthy and sustainable development of global hoisting industry.

XCMG Hoisting Machinery has a full range of products, including 5–220t truck cranes, 40–4000t all-terrain cranes, 25–150t rough-terrain cranes, 30–160t telescopic boom crawler cranes and 45–4000t lattice boom crawler cranes. Our products have been exported to over 190 countries and regions, ranking first on global mobile crane manufacturer list for two consecutive years and consistently leading in China's crane export market share.





Research centers

Global collaborative R&D system China, Europe, North America, Brazil and Australia

We have set up multiple R&D centers around the world that focus on researching the regulatory requirements and customer needs in different regional markets, and developing special regional models to better meet the usage habits of customers worldwide.



XCMG European R&D Center



XCMG North American R&D Center



XCMG Brazilian R&D Center



XCMG Australian R&D Center

R&D achievements

Break through nearly 100 core technologies, dedicating in the research and development of crawler equipment for three decades

Obtain market access certifications for various regions, and series products have passed CE certification, Customs Union EAC certification and North America certification

Valid patents 1,770 (including 909 invention patents, among winch 89 are overseas authorized patents) and valid software copyrights 165



Intelligent manufacturing



Welding robot



Lacing tube robot



Automatic feeding of track rollers



Fine coating



Intelligent warehousing and transportation



Test of complete machine

Global service

XCMG has globally

30

Subsidiaries

40

Sales Offices

40

Spare Part Centers

300+

Dealers

2000+

Service Outlets

5000+

Service Engineers

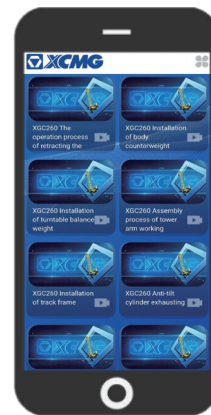
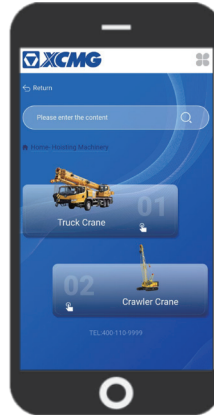
1500

Specialized Service Facilities

Regularly enjoy XCMG's global services

Experience the convenience and comfort of having XCMG in hand

XCMG video



Provide customers with services including on-site equipment inspections, product maintenance and operation training, service APP installation guidance, reducing the operational costs for customers.



▲ Service in Southeast Asian



▲ Service in Indonesia



▲ Service in Central Asian



▲ Service in Africa

CONTENTS

Product highlight	07
Dimension parameters	10
Technical specifications	12
Main technical parameters	15
Operation modes and lifting performances	16
Dimension of transported components	29



01 Quick set-up

Real-time monitoring and display of ground pressure

- ▶ Display ground pressure dynamically and give early warnings automatically.



High construction efficiency and low using cost

- ▶ Rich boom combinations and high boom length switching efficiency greatly improve the performance and adaptability of medium & long boom.



Efficient hoisting and slewing systems

02 Low operating cost

Convenient transportation and assembly

- ▶ Track width can be retracted to 3.5m via hydraulic cylinder, only one trailer is required for the transport of the whole machine.
- ▶ Realize self-assembly of track frames and rear counterweight, with high operational efficiency and strong transportation adaptability.



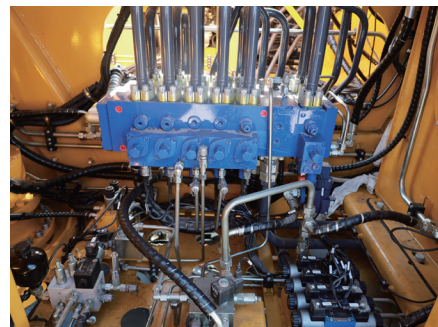
Self-assembly of track frames



Self-assembly of rear counterweight

Convenient repair and maintenance

- ▶ Main maintenance components are placed outside of the crane sheds, saving both time and effort for maintenance.



Strong and powerful travel system

03 Product highlight

- ▶ **Fault self-diagnosis system:** position abnormality in real time, identify fault points quickly.
- ▶ **Reliable quality system:** Life-cycle structure safety design technology, first-class manufacturing equipment, high-strength steel welding process.

Height limiter

The limit device is safe and reliable, effectively preventing rope over-winding.

Anemometer and height mark lamp

Trigger sound and light alarm automatically in adverse weather conditions.

Rope over-releasing prevention device

Detect the remaining length of wire rope to avoid loss of control caused by complete release.

Hook latch

Prevent accidental falling of hook during lifting process, avoid safety accidents.

Real-time monitoring

The working states of hoisting, slewing and hooks are all under control.

Emergency stop switch

(Mechanical + Program + Limit) switch, enhancing the response speed in emergency.

04 Exclusive comfort

Human-machine collaboration, saving time and labor Large-view cab, excellent operating experience

- ▶ The appearance of the cab is fashion and novel, with a shock-absorbing seat, providing a more comfortable driving and operating experience.
- ▶ It features large glass areas with well-designed side windows, offering a futuristic feel and providing the operator with a wide field of vision.
- ▶ Highly integrated control panels, which support one-click operation, improving the working efficiency.



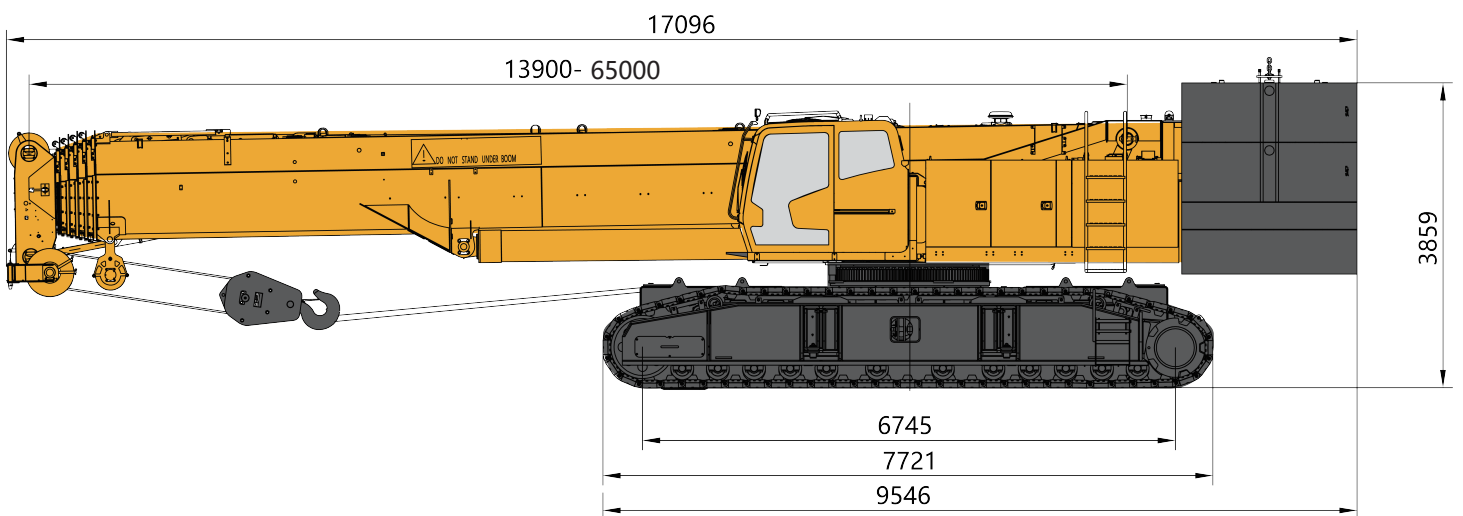
- ▶ Intelligent diagnosis system can monitor the crane state in real time. It allows users to query fault codes through the display in cab, thereby reducing downtime.
- ▶ Air conditioner with independent condenser and multi-duct, the temperature in the cab can be adjusted quickly, creating a comfortable working environment.

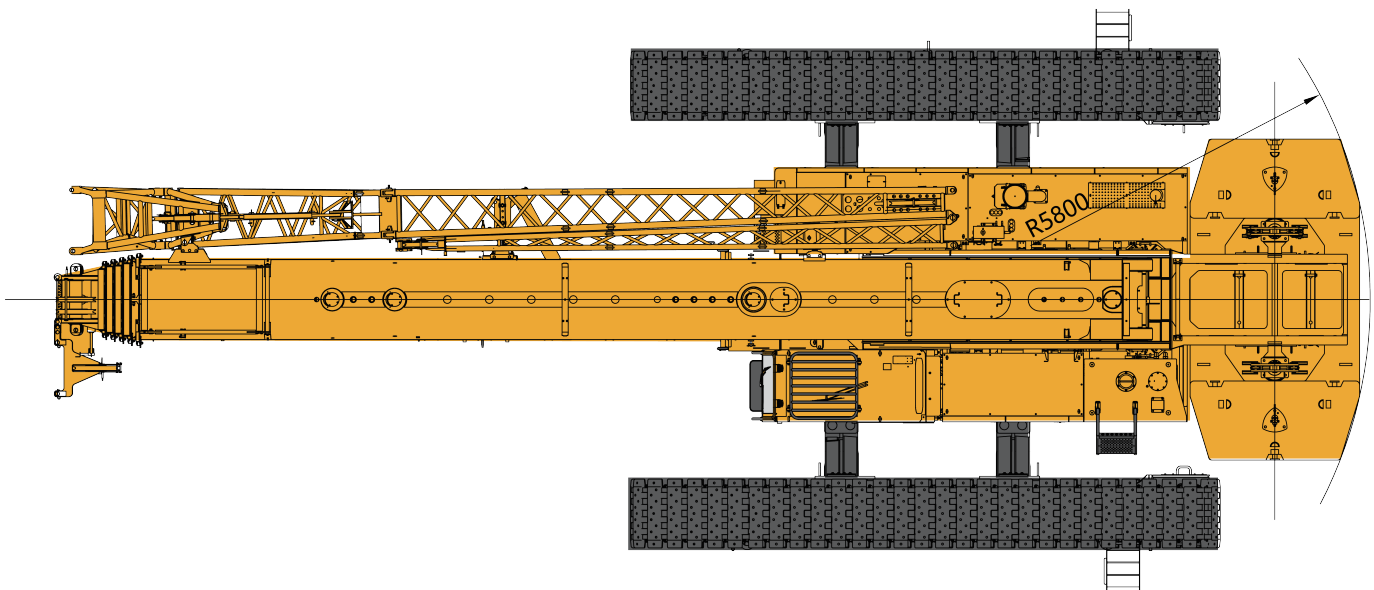
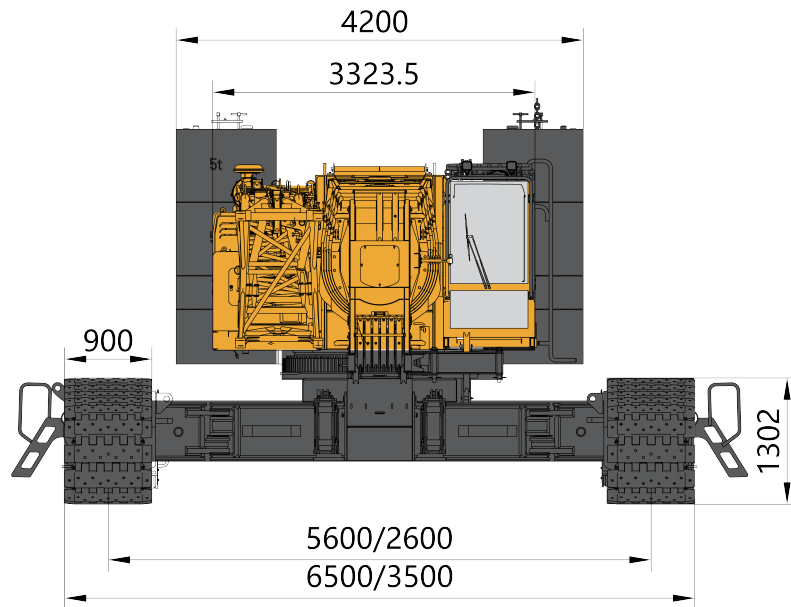


Fault query interface



Dimension parameters





Technical specifications



Engine

- Model: Weichai engine WP8G350E302
- Emission standard: off-road stage III
- Rated power: 257kW/2100rpm
- Fuel tank capacity: 520L



Hydraulic system

- Hydraulic system includes hoisting, luffing, slewing, traveling and auxiliary systems.
- Adopt LUDV load sensing system controlled by hydraulic pilot proportional control, with features of accurate speed, sensitive operation and good fine motion performance. LUDV integrated main valve can achieve the compound operation of multiple movements, compact in structure and easy for maintenance.
- It can realize various compound actions, and has automatic direction change function during travel operation. To monitor the running state and diagnose the system failure, pressure measuring joint is set at the feature points of hydraulic system to improve the convenience for use, maintenance and repair of the crane.
- Maximum system pressure: 35MPa
- Hydraulic oil tank capacity: 922L



Electrical system

- Electrical system: it is a fully electronic control integrated system. The core control network is built on the basis of CAN bus technology, including engine control, hydraulic system proportional adjustment, auxiliary equipment drive, LMI and safety monitoring modules.
- Display screen: 12-inch color LCD screen, parameters such as engine parameters, lifting weight, boom length and boom angle are shown in real time.



Turntable

- Turntable is made of high-strength steel plates and welded in box-shaped radial structure. The main structure of turntable and the suspended brackets on both sides are designed according to the force conditions of the whole machine. The structure is simple, with good processability, strong load-bearing capacity and high rigidity.



Operator's cab

- Model: The new generation cab is designed according to ergonomic principles in steel frame structure. All glass is tempered glass, ensuring both safety and visibility.
- Comfort: Instruments and controls are arranged in accordance with ergonomics. It is set with adjustable seat and rotatable display. The display is distributed within the optimal field of vision. The cab is also equipped with cooling and heating air conditioner, sound equipment, fire extinguisher and closed-circuit monitoring system, spacious and comfortable.



Slewing system

- Slewing drive: driven by hydraulic motor, the slewing system is externally meshed with slewing bearing for rotation.
- Slewing brake: it has a built-in planetary reducer, with negative brake wet type multi-disc normally closed brake to achieve “spring braking/hydraulic release” function. The slewing system is also set with a mechanical slewing locking device to realize locking protection.

Hoisting system

- Main winch and auxiliary winch (standard configuration): it has built-in planetary reducer, with constant closed brake to achieve “spring brake/ hydraulic release” function, safe and reliable. The reducer is lubricated by splashing oil, free of maintenance.

Main hoisting system	Rope diameter	22 mm
	Winch rope length	320 m
	Rated single line pull	11.1 t

Auxiliary hoisting system	Rope diameter	22 mm
	Winch rope length	210 m
	Rated single line pull	10 t

Boom system

- Main boom: six “U”-shaped boom sections. Main boom length: 13.9m ~ 65m.
Fixed jib: lattice structure, fixed jib installation angle: 0° , 15° and 30° . Fixed jib length: 11m/18.5m.

Travel system

- Travel system adopts built-in planetary reducer and is driven by axial piston variable displacement motor, the reducer is set with hydraulic release service brake, safe and reliable. The left and right travel devices can be operated synchronously or separately to realize straight travel and turning.

Counterweight

- Rear counterweight: five kinds of combinations: 0t, 16t, 24t, 34t and 44t, composition:
 - ①Rear counterweight 16t: counterweight tray 1 × 16t
 - ②Rear counterweight 24t: counterweight tray 1 × 16t, counterweight slab 1 × 8t
 - ③Rear counterweight 34t: counterweight tray 1 × 16t, counterweight slab 1 × 8t+2 × 5t
 - ④Rear counterweight 44t: counterweight tray 1 × 16t, counterweight slab 1 × 8t+4 × 5t

Hook block

- There are 3 types of hooks available, and the specific parameters are as follows:

Name	Dead weight	Number of pulleys
130t hook	1.015t	6
75t (optional)	0.653t	3
11t hook	0.265t	—



Safety device

- Safety devices include: LMI, main/auxiliary winch rope over-winding prevention device, main/auxiliary winch rope over-releasing prevention device, boom angle limiter, height mark lamp, anemometer, buzzer and warning lamp, emergency stop, automatic fault diagnosis system, black box, etc.



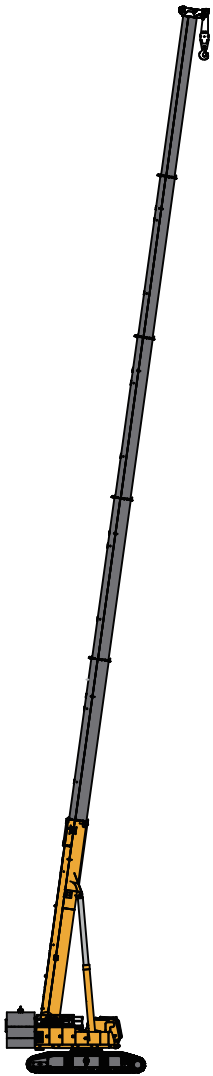
Outrigger cylinder

- Four outrigger cylinders can be installed to realize the lifting of the basic machine, providing convenience for the disassembly and assembly of the tracks.

Main technical parameters

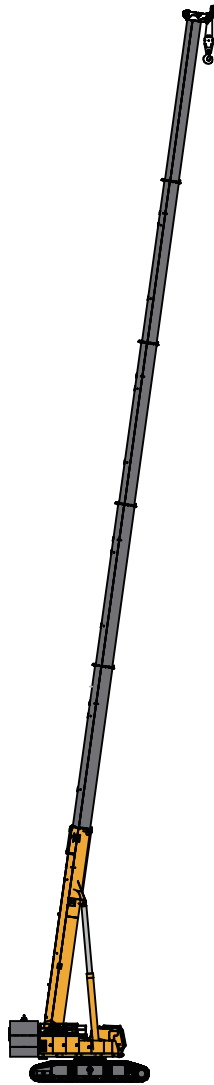
Item		Unit	Parameters
Maximum rated lifting capacity		t	160
Maximum lifting moment		t·m	606
Lifting performance parameters	Main boom length	m	13.9~65
	Fixed jib length	m	11/18.5
	Maximum main boom and jib combination length	m	91.5 (65+8+18.5)
	Extension section (optional)	m	8
	Independent boom head (optional)	m	2.9
Speed parameters	Main hoisting system	m/min	135
	Auxiliary hoisting system	m/min	135
	Slewing speed	r/min	1.7
	Travel speed	km/h	2.1
Weight and dimension parameters	Weight of complete crane	t	132.2
	Weight of complete crane	m	16.936×6.5×3.859
	Crawler shoe width	m	0.9
	Basic crane in transport state (without track frames)	t	51.8
	Maximum dimension of single piece in transport state (L×W×H)	m	16.936×3.5×3.5

Operation modes and lifting performances



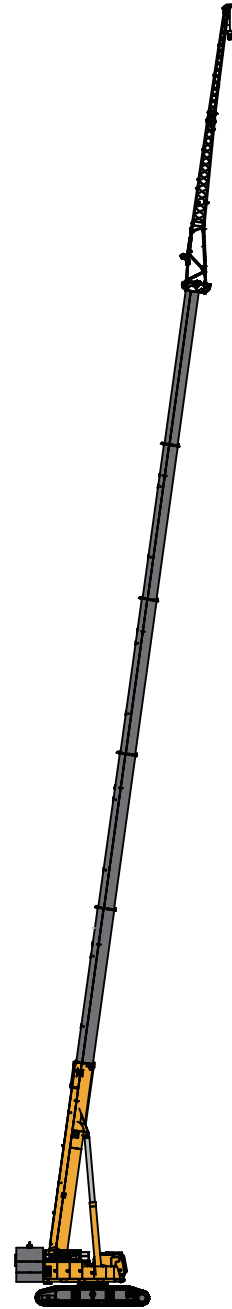
Main boom

Main boom: 13.9–65 m



Main boom + boom end single pulley

Main boom: 13.9–65 m

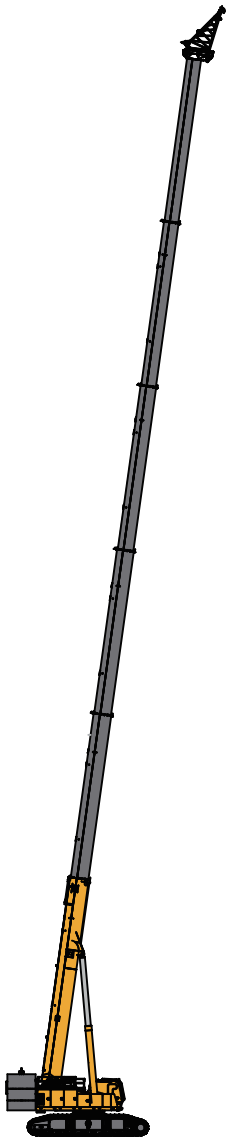


Main boom + fixed jib

Main boom: 13.9–65 m

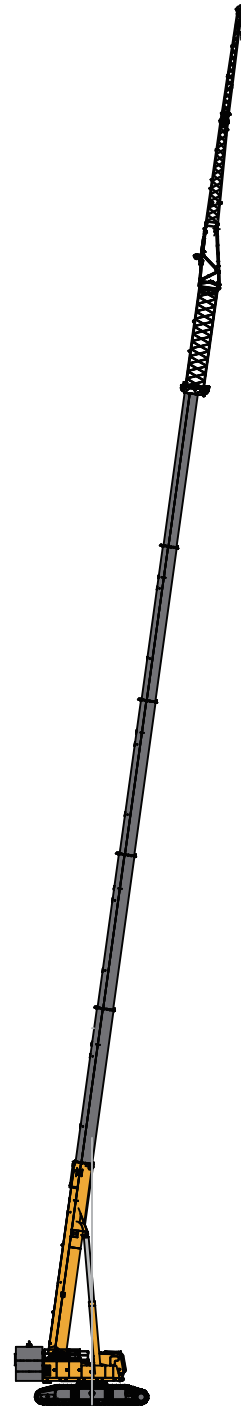
Fixed jib: 11 m/18.5 m

Operation modes and lifting performances



Main boom + independent boom head

Main boom: 13.9–65 m
Independent boom head: 2.9 m

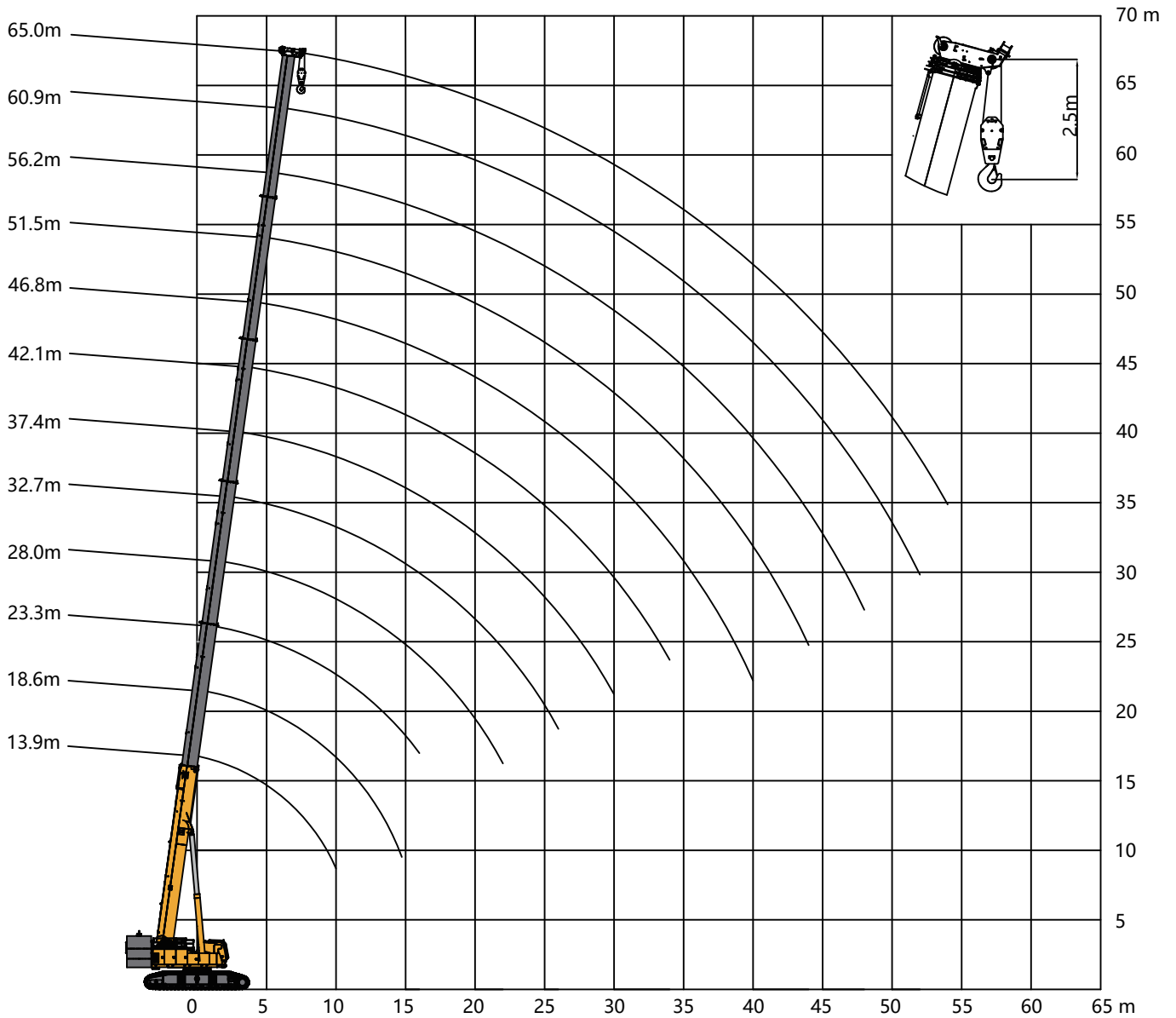


Main boom + extension section + fixed jib

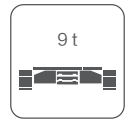
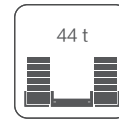
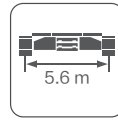
Main boom: 13.9–65 m
Extension section: 8m
Fixed jib: 11 m/18.5 m

HB

Main boom operation mode



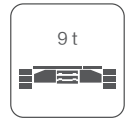
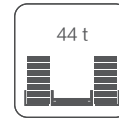
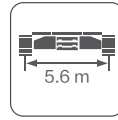
Main boom: 13.9~32.7 m



	13.9	18.6			23.3			28			32.7		
2.5	160*												
3	140*												
3.5	130	68.8	98	110									
4	125	65.4	97.5	110	70.5	110	110						
4.5	115	62.4	95	110	67.6	110	110	71.3	83	90			
5	110	59.7	93	105	64.7	105	105	68.6	80	85			
6	101	54.7	87	100	60.5	95	95	64	73	80	53.1	66.5	70
7	85	50.5	80	90	56.2	82	82	59.8	68	68	48.3	62.8	64
8	73	47.4	74.3	73.6	52.5	69	69	56.4	64	64	44.4	59	59
9	65	44.3	65.3	64.6	49.6	65.2	64.1	53.4	60	60	40.6	56	56
10	55	41.5	57.1	56.1	46.9	56.6	55.3	50.6	54.9	54.7	37.5	53	53
12		37.3	42.7	41.8	42	43	41.5	45.1	42.5	42.3	32.8	43.7	42.2
14		34.3	33.5	32.6	36	33.7	32.3	36.3	33.6	33.3	29.2	35.6	34.1
16					29.4	27.3	25.9	29.8	27.2	26.9	26.2	29.5	27.9
18					24.6	22.6	21.2	25	22.5	22.1	23.6	24.7	23.1
20								21.3	18.9	18.5	20.6	21.1	19.5
22								18.4	16	15.6	17.6	18.2	16.6
24											15.1	15.8	14.3
26											13.1	13.8	12.3
Boom combination	00000	00001	00100	01000	00011	01100	11000	00111	02100	11100	00211	01111	11110
	12	12			10			8			7		

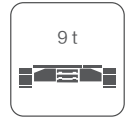
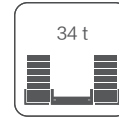
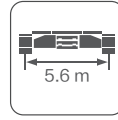
Note: The lifting capacity marked with “*” is achieved through using auxiliary devices and additional pulley blocks.

Main boom: 37.4~65 m



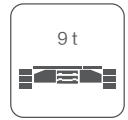
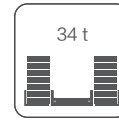
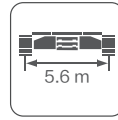
	37.4			42.1			46.8			51.5			56.2		60.9	65
7	56.4	63	58.4													
8	52	58	53.1	39.3	51.8	50.2										
9	48	54	48.7	37.1	48.4	46.4	29.2	38.3	40							
10	44.6	50	44.8	35.2	45.4	42.8	27.7	36.3	38.5	26	30.4	31.4				
12	37.4	42.2	38	31.8	39.6	36.2	25.2	32.9	33.6	23.8	28.1	29.3	22.3	24		
14	33.4	34.3	32.7	28.8	33.4	32	22.9	29.3	29.8	22	24.7	25.8	21.1	22.7	19.2	17
16	28.7	28.6	27.1	26.2	27.9	27.4	21	26	26.3	20.5	22	23	19.4	20.1	18.2	15.4
18	24.4	24.1	22.5	24.2	23.7	23.2	19.3	23.4	22.6	19	19.9	20.5	17.5	18.1	16.3	14.9
20	20.7	20.5	18.9	21.2	20.4	19.8	17.8	20.2	19.4	17.8	18	18.5	15.8	16.3	14.8	13.5
22	17.8	17.6	16	18.3	17.5	17	16.6	17.6	16.9	16.3	16.4	16.5	14.5	14.7	14	12.5
24	15.5	15.2	13.7	16	15.1	14.6	15.6	15.4	14.6	15	15	14.4	13.3	13.5	12.8	11.6
26	13.5	13.3	11.8	14	13.2	12.7	14.4	13.4	12.7	13.9	13.6	12.7	12.2	12.3	11.8	10.6
28	11.9	11.6	10.2	12.4	11.6	11	12.7	11.8	11	12.7	12.1	11.3	11.3	11.3	10.8	9.8
30	10.5	10.2	8.8	11	10.2	9.7	11.3	10.4	9.6	11.4	10.8	9.9	10.5	10.1	10	9.1
32				9.7	9	8.5	10.1	9.2	8.4	10.2	9.6	8.7	9.8	9	9.2	8.4
34				8.7	7.9	7.4	9	8.1	7.4	9.1	8.5	7.6	9	8	8.3	7.8
36							8.1	7.2	6.5	8.2	7.6	6.7	8.1	7.1	7.5	7.2
38							7.3	6.4	5.7	7.4	6.8	5.9	7.2	6.3	6.8	6.6
40										6.6	6	5.2	6.5	5.6	6	6
42										6	5.4	4.5	5.8	4.9	5.4	5.4
44										5.4	4.8	3.9	5.2	4.3	4.8	4.8
46													4.7	3.8	4.2	4.3
48													4.2	3.3	3.7	3.8
50															3.3	3.3
52															2.9	2.9
54																2.5
56																2.2
Boom combination	02111	11111	21110	11112	12111	21111	11122	12211	22111	11222	12221	22211	12222	22221	22222	33333
	6			5			5			3			3		2	2

Main boom: 13.9~32.7 m



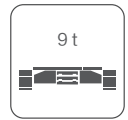
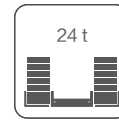
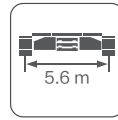
Boom combination	13.9			18.6			23.3			28			32.7		
	3	130													
3.5	128	68.8	98	110											
4	125	65.4	97.5	110	70.5	110	110								
4.5	115	62.4	95	110	67.6	110	110	71.3	83	90					
5	110	59.7	93	105	64.7	105	105	68.6	80	85					
6	101	54.7	87	100	60.5	95	95	64	73	80	53.1	66.5	70		
7	85	50.5	80	84.9	56.2	80.5	78.5	59.8	68	68	48.3	62.8	64		
8	70	47.4	69.8	68.8	52.5	67.7	65.8	56.4	63.6	63.3	44.4	59	59		
9	57	44.3	58.2	57.2	49.6	56.8	55.4	53.4	54.9	54.5	40.6	55.3	53.2		
10	47.6	41.5	48.8	47.9	46.9	48.6	47.3	49.9	47.1	47	37.5	48.2	46.8		
12		37.3	36.1	35.3	38.9	36.6	35	38.8	36.1	36	32.8	37.6	36.1		
14		29.2	28	27.1	30.6	28.4	27	31	28.3	28	29.2	30.4	29		
16					24.8	22.7	21.3	25.3	22.6	22.4	25.3	25.1	23.4		
18					20.6	18.5	17.2	21	18.5	18.2	21	20.9	19.2		
20								17.8	15.3	15	17.8	17.6	16		
22								15.2	12.7	12.4	15.2	15	13.5		
24											13.1	12.9	11.4		
26											11.3	11.2	9.7		
Boom combination	00000	00001	00100	01000	00011	01100	11000	00111	02100	11100	00211	01111	11110		
	12	12			10			8			7				

Main boom: 37.4~65 m



Boom combination	37.4			42.1			46.8			51.5			56.2		60.9	65
	7	56.4	63	58.4												
8	52	58	53.1	39.3	51.8	50.2										
9	48	52.1	48.7	37.1	48.4	46.4	29.2	38.3	40							
10	44.6	46.1	43.9	35.2	44.1	42.8	27.7	36.3	38.5	26	30.4	31.4				
12	36.1	36.2	34.5	31.8	35.2	34.6	25.2	32.9	33.6	23.8	28.1	29.3	22.3	24		
14	29.2	29.3	27.6	28.8	28.5	27.9	22.9	28	27.1	22	24.7	25.8	21.1	22.7	19.2	17
16	24.2	24.2	22.6	24.4	23.6	23	21	23.2	22.4	20.5	22	21.7	19.4	20.1	18.2	15.4
18	20.5	20.3	18.6	20.7	19.9	19.3	19.3	19.6	18.8	19	19.2	18.2	17.5	18	16.3	14.9
20	17.2	17	15.4	17.8	17	16.4	17.8	16.8	16	17.1	16.5	15.6	15.8	15.4	14.8	13.5
22	14.7	14.5	12.9	15.3	14.4	13.8	15.5	14.5	13.8	14.9	14.3	13.4	14.3	13.3	13.3	12.5
24	12.6	12.4	10.8	13.2	12.4	11.8	13.6	12.6	11.8	13.1	12.5	11.6	12.6	11.6	11.6	11.3
26	10.9	10.7	9.1	11.4	10.6	10.1	11.8	10.9	10.1	11.6	11	10.1	11.1	10.1	10.2	9.9
28	9.4	9.2	7.7	10	9.2	8.6	10.4	9.4	8.6	10.3	9.7	8.8	9.9	8.9	9	8.7
30	8.2	8	6.5	8.7	7.9	7.4	9.1	8.2	7.4	9.2	8.6	7.7	8.8	7.8	8	7.7
32				7.7	6.9	6.3	8	7.1	6.3	8.2	7.5	6.6	7.9	6.9	7.1	6.9
34				6.7	5.9	5.4	7.1	6.2	5.4	7.2	6.6	5.7	7.1	6.1	6.3	6.1
36							6.3	5.4	4.6	6.4	5.8	4.9	6.3	5.3	5.6	5.4
38							5.6	4.6	3.9	5.7	5	4.1	5.5	4.5	5	4.8
40										5	4.4	3.5	4.9	3.9	4.4	4.3
42										4.4	3.8	2.9	4.3	3.3	3.8	3.8
44										3.9	3.3	2.4	3.8	2.8	3.3	3.3
46													3.3	2.3	2.8	2.8
48													2.8	1.9	2.4	2.4
50															2	2
52															1.6	1.6
54																1.3
Boom combination	02111	11111	21110	11112	12111	21111	11122	12211	22111	11222	12221	22211	12222	22221	22222	33333
	6			5			5			3			3		2	2

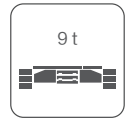
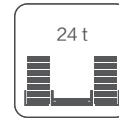
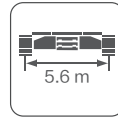
Main boom: 13.9~32.7 m



	13.9	18.6			23.3			28			32.7		
3	130												
3.5	128	68.8	98	110									
4	125	65.4	97.5	110	70.5	110	110						
4.5	115	62.4	95	110	67.6	110	110	71.3	83	90			
5	110	59.7	93	105	64.7	105	104.5	68.6	80	85			
6	95.2	54.7	87	89.2	60.5	83.7	81.5	64	73	76.8	53.1	66.5	70
7	75.4	50.5	72.9	71.7	56.2	68.2	66.1	59.8	63.5	63.1	48.3	62.8	60.8
8	59.1	47.4	59.1	58.1	52.5	57.1	55.2	56.4	53.6	53.2	44.4	53.9	51.7
9	47.8	44.3	49.1	48.1	49.6	47.9	46.5	49.2	46	45.6	40.6	46.8	44.7
10	39.7	41.5	41	40	43.2	40.9	39.5	42.3	39.4	39.4	37.5	40.8	39.1
12		31.3	30	29.1	32.7	30.4	28.9	32.7	30	29.9	31.7	31.5	30.1
14		24.2	22.9	22.1	25.6	23.4	21.9	26	23.3	23	25.5	25.3	23.9
16					20.6	18.5	17.1	21	18.4	18.1	21	20.8	19.2
18					16.9	14.8	13.5	17.3	14.8	14.5	17.3	17.2	15.5
20								14.5	12	11.7	14.5	14.3	12.7
22								12.2	9.8	9.5	12.2	12.1	10.5
24											10.4	10.3	8.7
26											8.9	8.8	7.3
Boom combination	00000	00001	00100	01000	00011	01100	11000	00111	02100	11100	00211	01111	11110
	12	12			10			8			7		

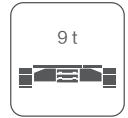
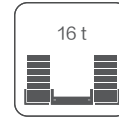
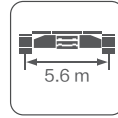
Note: The lifting capacity marked with “*” is achieved through using auxiliary devices and additional pulley blocks.

Main boom: 37.4~65 m



	37.4			42.1			46.8			51.5			56.2		60.9	65
7	56.4	58.8	56.4													
8	50.7	50.4	48.1	39.3	47.9	47.1										
9	44.2	43.9	41.7	37.1	41.9	41.1	29.2	38.3	39.3							
10	39	38.7	36.6	35.2	37	36.3	27.7	35.9	34.8	26	30.4	31.4				
12	30.2	30.3	28.6	30.2	29.4	28.7	25.2	28.7	27.9	23.8	27.6	26.7	22.3	24		
14	24.2	24.3	22.6	24.4	23.6	23	22.9	23.1	22.3	22	22.3	21.4	21.1	21	19.2	17
16	19.9	19.9	18.3	20.2	19.3	18.8	20	19	18.2	19.1	18.5	17.5	18.3	17.3	17	15.4
18	16.7	16.6	14.9	17	16.2	15.6	16.9	15.9	15.1	16.2	15.5	14.6	15.4	14.4	14.3	13.8
20	14	13.8	12.1	14.5	13.7	13.1	14.5	13.5	12.7	13.8	13.2	12.3	13.2	12.2	12.1	11.7
22	11.7	11.5	10	12.3	11.5	10.9	12.5	11.6	10.8	12	11.3	10.4	11.4	10.4	10.4	10
24	9.9	9.7	8.2	10.5	9.7	9.1	10.9	9.9	9.1	10.4	9.8	8.9	9.9	8.9	9	8.6
26	8.4	8.3	6.7	9	8.2	7.6	9.4	8.5	7.7	9.1	8.5	7.6	8.6	7.7	7.8	7.5
28	7.2	7	5.5	7.7	6.9	6.4	8.1	7.2	6.4	8	7.4	6.5	7.6	6.6	6.7	6.5
30	6.1	5.9	4.4	6.7	5.9	5.3	7.1	6.1	5.3	7.1	6.5	5.6	6.7	5.7	5.9	5.6
32				5.7	5	4.4	6.1	5.2	4.4	6.2	5.6	4.7	5.9	4.9	5.1	4.9
34				4.9	4.1	3.6	5.3	4.4	3.6	5.4	4.8	3.9	5.2	4.2	4.4	4.2
36							4.6	3.7	2.9	4.7	4.1	3.2	4.6	3.6	3.8	3.7
38							4	3	2.3	4.1	3.4	2.5	3.9	3	3.3	3.2
40										3.5	2.9	2	3.4	2.4	2.9	2.7
42										3	2.4	1.5	2.9	1.9	2.4	2.3
44										2.5	1.9	1	2.4	1.4	1.9	1.9
46													2	1	1.5	1.5
48															1.1	1.2
Boom combination	02111	11111	21110	11112	12111	21111	11122	12211	22111	11222	12221	22211	12222	22221	22222	33333
	6			5			5			3			3		2	2

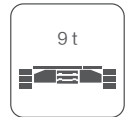
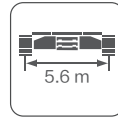
Main boom: 13.9~32.7 m



	13.9	18.6			23.3			28			32.7		
3	130												
3.5	128	68.8	98	110									
4	125	65.4	97.5	110	70.5	110	110						
4.5	115	62.4	95	110	67.6	106.7	104.1	71.3	83	90			
5	109.1	59.7	93	100.2	64.7	92.2	89.7	68.6	80	83.2			
6	84.4	54.7	77.7	76.4	60.5	71.8	69.6	64	66.2	65.8	53.1	65.2	62.7
7	64.7	50.5	62.3	61.1	56.2	58.3	56.2	58	54.2	53.8	48.3	54.3	51.9
8	50.4	47.4	50.6	49.6	51.5	48.6	46.7	49.1	45.5	45.1	44.4	46.2	44
9	40.5	43.3	41.8	40.8	43.2	40.8	39.4	42.2	38.9	38.5	40.2	40	37.9
10	33.4	36.1	34.7	33.7	37	34.6	33.2	36.2	33.3	33.3	35	34.8	33
12		26.4	25.1	24.2	27.8	25.5	24	27.8	25.1	25	26.9	26.7	25.3
14		20.1	18.9	18.1	21.5	19.3	17.9	22	19.2	19	21.5	21.3	19.9
16					17.2	15	13.7	17.6	14.9	14.7	17.6	17.4	15.8
18					13.9	11.9	10.5	14.3	11.8	11.5	14.3	14.2	12.6
20								11.9	9.4	9.1	11.9	11.7	10.1
22								9.9	7.4	7.2	9.9	9.7	8.2
24											8.3	8.2	6.6
26											7	6.8	5.3
Boom combination	00000	00001	00100	01000	00011	01100	11000	00111	02100	11100	00211	01111	11110
	12	12			10			8			7		

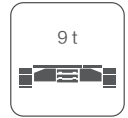
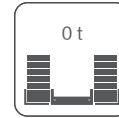
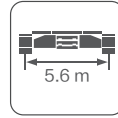
Note: The lifting capacity marked with “*” is achieved through using auxiliary devices and additional pulley blocks.

Main boom: 37.4~65 m



	37.4			42.1			46.8			51.5			56.2	60.9	65	
7	50.7	50.4	48													
8	43.3	43.1	40.8	39.3	40.8	40										
9	37.6	37.4	35.2	36.7	35.6	34.8	29.2	34.4	33.2							
10	33.1	32.8	30.7	32.4	31.3	30.6	27.7	30.4	29.3	26	29.7	28.5				
12	25.5	25.6	23.9	25.6	24.7	24.1	25.1	24.1	23.3	23.8	23.1	22.1	22.3	21.6		
14	20.3	20.3	18.7	20.5	19.6	19	20.2	19.2	18.4	19.2	18.5	17.5	18.2	17.2	16.9	16.2
16	16.5	16.5	14.9	16.8	16	15.4	16.6	15.7	14.9	15.8	15.1	14.2	15	14	13.8	13.2
18	13.7	13.6	12	14	13.2	12.6	13.9	13	12.2	13.2	12.6	11.7	12.5	11.5	11.4	11
20	11.3	11.2	9.5	11.8	11	10.4	11.8	10.9	10.1	11.2	10.6	9.7	10.6	9.6	9.6	9.2
22	9.4	9.2	7.6	10	9.2	8.6	10.1	9.2	8.4	9.6	9	8.1	9	8	8.1	7.7
24	7.8	7.6	6.1	8.4	7.6	7	8.7	7.8	7	8.3	7.6	6.7	7.7	6.8	6.8	6.5
26	6.5	6.3	4.8	7.1	6.3	5.7	7.5	6.5	5.7	7.1	6.5	5.6	6.7	5.7	5.8	5.5
28	5.4	5.2	3.7	6	5.2	4.6	6.3	5.4	4.6	6.2	5.6	4.7	5.7	4.8	4.9	4.7
30	4.4	4.3	2.7	5	4.2	3.7	5.4	4.5	3.7	5.4	4.8	3.9	5	4	4.2	3.9
32				4.2	3.4	2.9	4.6	3.7	2.9	4.7	4.1	3.1	4.3	3.3	3.5	3.3
34				3.5	2.7	2.1	3.9	2.9	2.2	4	3.3	2.4	3.7	2.7	2.9	2.8
36							3.2	2.3	1.6	3.3	2.7	1.8	3.2	2.2	2.4	2.3
38							2.7	1.8	1	2.8	2.2	1.3	2.6	1.7	2	1.8
40										2.3	1.7		2.2	1.2	1.6	1.4
42										1.8	1.2		1.7		1.2	1.1
Boom combination	02111	11111	21110	11112	12111	21111	11122	12211	22111	11222	12221	22211	12222	22221	22222	33333
	6			5			5			3			3		2	2

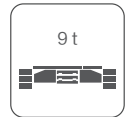
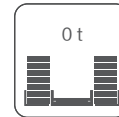
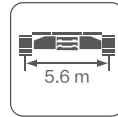
Main boom: 13.9~32.7 m



	13.9	18.6			23.3			28			32.7		
3	130												
3.5	128	68.8	98	110									
4	114.2	65.4	97.5	97.1	70.5	86.7	83.8						
4.5	92	62.4	81.6	80	67.6	72.9	70.3	70	65.2	64.7			
5	76.5	59.7	69.1	67.6	64.7	62.6	60.1	61	56.5	56			
6	56.4	54.1	52.2	50.8	51.5	48.1	45.9	48.1	44.1	43.6	44.7	44.5	41.9
7	43.2	43	41.2	40	41.6	38.5	36.4	39.4	35.5	35.2	36.9	36.6	34.3
8	32.9	35.1	33.5	32.4	34.6	31.6	29.7	33	29.4	29	31.1	30.8	28.6
9	25.9	28.7	27.2	26.2	29	26.5	24.6	28.1	24.7	24.3	26.6	26.4	24.2
10	20.9	23.5	22.1	21.2	24.5	22.2	20.7	24	21	20.6	23	22.8	20.8
12		16.6	15.3	14.4	18	15.7	14.2	18	15.3	15.2	17.3	17.1	15.6
14		12.1	10.8	10	13.5	11.3	9.8	13.9	11.2	10.9	13.4	13.2	11.8
16					10.3	8.2	6.8	10.7	8.1	7.8	10.6	10.5	8.9
18					8	5.9	4.6	8.4	5.9	5.6	8.4	8.3	6.6
20								6.6	4.1	3.9	6.6	6.5	4.9
22								5.2	2.7	2.5	5.2	5.1	3.5
24											4.1	3.9	2.4
26											3.1	3	1.4
Boom combination	00000	00001	00100	01000	00011	01100	11000	00111	02100	11100	00211	01111	11110
	12	12			10			8			7		

Note: The lifting capacity marked with “*” is achieved through using auxiliary devices and additional pulley blocks.

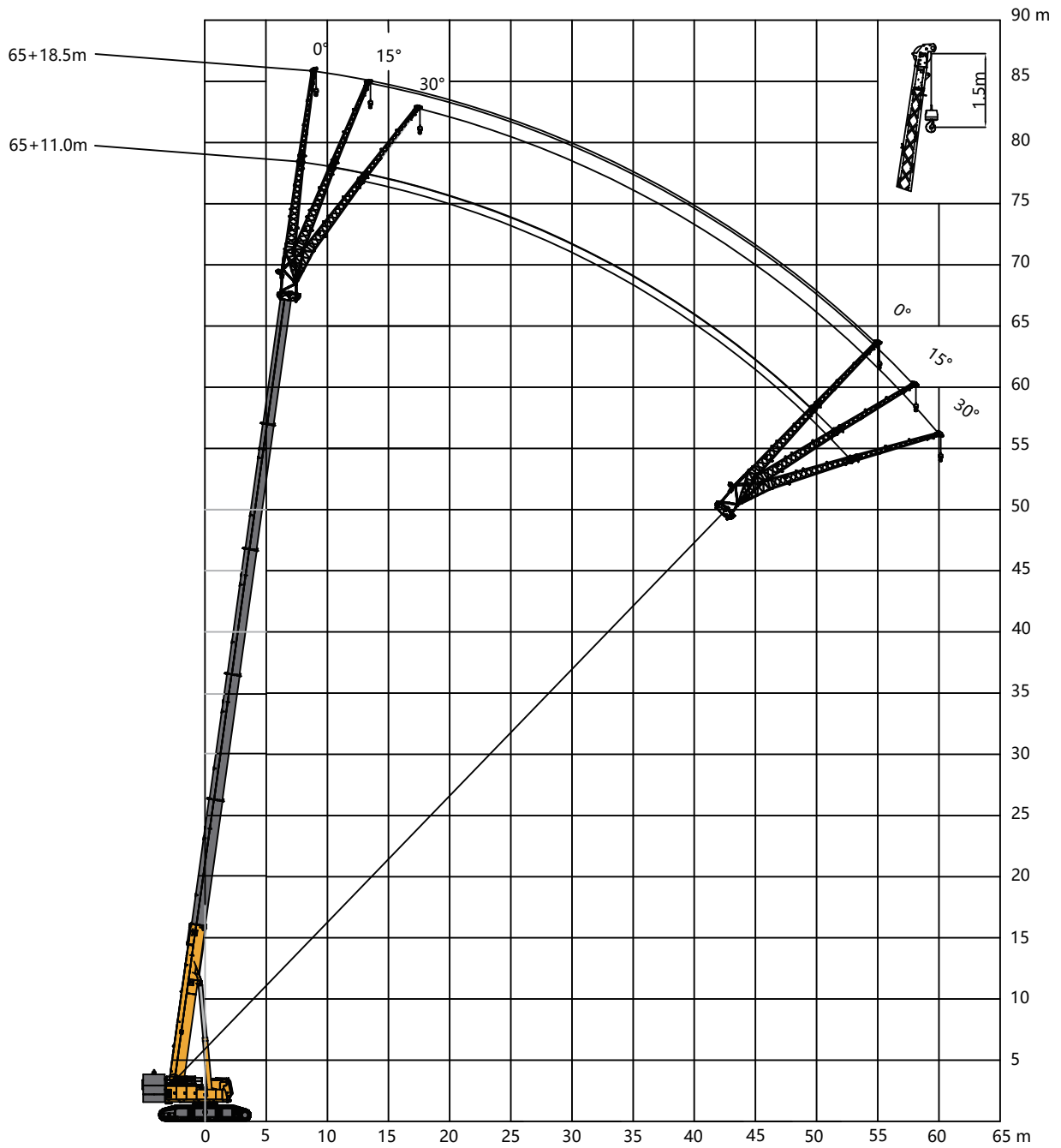
Main boom: 37.4~65 m



	37.4			42.1			46.8			51.5			56.2		60.9	65
7	33.9	33.6	31.2													
8	28.6	28.4	26.1	27.9	26.8	25.9										
9	24.5	24.3	22.1	24.1	23	22.2	23.5	22.2	21.1							
10	21.3	21	18.9	21	20	19.2	20.6	19.4	18.3	19.4	18.7	17.6				
12	16	16.1	14.1	16.2	15.3	14.6	15.9	14.9	14	14.7	14	13	13.7	12.6		
14	12.3	12.3	10.7	12.6	11.8	11.2	12.4	11.5	10.6	11.5	10.8	9.9	10.6	9.6	9.4	8.8
16	9.6	9.7	8.1	10	9.2	8.6	9.9	9	8.2	9.1	8.5	7.6	8.4	7.4	7.3	6.8
18	7.6	7.6	6	8	7.2	6.6	8	7.1	6.3	7.4	6.7	5.8	6.7	5.7	5.7	5.3
20	6.1	5.9	4.3	6.5	5.7	5.1	6.5	5.6	4.8	6	5.3	4.4	5.4	4.4	4.4	4.1
22	4.7	4.5	2.9	5.2	4.5	3.9	5.3	4.4	3.6	4.9	4.2	3.3	4.3	3.3	3.4	3.1
24	3.6	3.4	1.8	4.1	3.3	2.7	4.3	3.4	2.7	3.9	3.3	2.4	3.4	2.5	2.6	2.3
26	2.6	2.4	13.8	3.2	2.4	1.8	3.5	2.6	1.8	3.2	2.5	1.7	2.7	1.7	1.9	1.6
28	1.8	1.6		2.4	1.6	1	2.8	1.8	1	2.5	1.9	1	2.1	1.1	1.3	1.1
30	1.1	12		1.7	11.9		2.1	1.2		2	1.3		1.5			
32				1.1			1.5			1.5						
Boom combination	02111	11111	21110	11112	12111	21111	11122	12211	22111	11222	12221	22211	12222	22221	22222	33333
	6			5			5			3			3		2	2

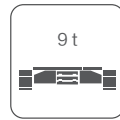
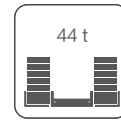
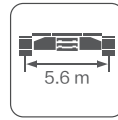
HF

Fixed jib operation mode



Main boom: 13.9 m

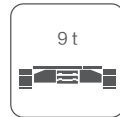
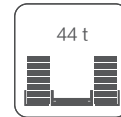
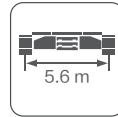
Fixed jib: 11/18.5 m



	13.9+11			13.9+18.5		
	0°	15°	30°	0°	15°	30°
5	10					
6	9.8			6.1		
7	9.6	7.9		5.7		
8	9.4	7.5		5.3		
9	9.1	7	5.4	4.7		
10	8.9	6.6	5.2	4.2	3.1	
12	8	6	4.9	3.5	2.5	
14	7.4	5.6	4.5	3	2.3	1.9
16	6.7	5.2	4.3	2.6	1.9	1.8
18	6.1	4.8	4.1	2.3	1.7	1.5
20		4.5	4	1.9	1.7	1.5
22				1.7	1.6	1.3
24				1.7	1.3	1.3
26					1.3	1.2
28						1.2
Boom combination	00000					
	1					

Main boom: 42.1 m

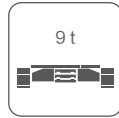
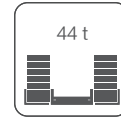
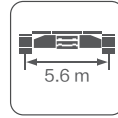
Fixed jib: 11/18.5 m



	42.1+11			42.1+18.5		
	0°	15°	30°	0°	15°	30°
12	9.6					
14	9.4	7.1		4.9		
16	9.2	6.7	4.8	4.7		
18	8.9	6.4	4.6	4.4	2.9	
20	8.5	6.1	4.5	4.2	2.6	
22	8.1	5.8	4.5	4	2.4	1.7
24	7.7	5.6	4.3	3.6	2.2	1.7
26	7.5	5.4	4.1	3.3	2.1	1.7
28	7.1	5.2	4	3	2	1.5
30	6.7	5	4	2.7	1.9	1.5
32	6.5	4.9	3.9	2.5	1.8	1.5
34	6.3	4.7	3.9	2.3	1.7	1.4
36	6.1	4.5	3.8	2.2	1.6	1.3
38	5.9	4.3	3.7	2.1	1.6	1.3
40		4.2	3.6	2	1.6	1.3
42			3.5	1.9	1.5	1.3
44				1.8	1.4	1.3
46					1.4	1.2
48						1.2
Boom combination	21111					
	1					

Main boom: 46.8 m

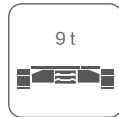
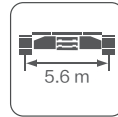
Fixed jib: 11/18.5 m



	46.8+11			46.8+18.5		
	0°	15°	30°	0°	15°	30°
12	9.6					
14	9.4	6.9		4.7		
16	9.2	6.5	4.9	4.5		
18	8.9	6.4	4.7	4.4	3	
20	8.6	6.2	4.5	4.2	2.8	
22	8.1	5.8	4.4	4	2.6	1.8
24	7.8	5.6	4.4	3.8	2.4	1.8
26	7.5	5.4	4.2	3.6	2.2	1.7
28	7.2	5.2	4	3.3	2.2	1.7
30	7	5.1	4	3	2	1.6
32	6.7	4.9	3.9	2.8	1.8	1.5
34	6.4	4.7	3.9	2.6	1.8	1.5
36	6.2	4.7	3.9	2.4	1.8	1.4
38	6	4.5	3.7	2.4	1.6	1.4
40	5.4	4.3	3.7	2.2	1.6	1.3
42		4.3	3.7	2	1.6	1.3
44			3.7	2	1.4	1.3
46				1.8	1.4	1.3
48				1.9	1.4	1.2
50					1.4	1.2
52						1.2
Boom combination	22111					
	1					

Main boom: 51.5 m

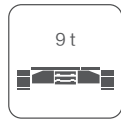
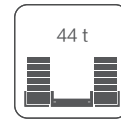
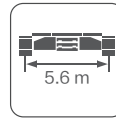
Fixed jib: 11/18.5 m



	51.5+11			51.5+18.5		
	0°	15°	30°	0°	15°	30°
14	9.6					
16	9	6.4		4.4		
18	8.7	6.3	4.7	4.3		
20	8.3	6	4.6	4.1	3	
22	7.9	5.8	4.4	3.9	2.7	
24	7.7	5.6	4.2	3.8	2.5	1.8
26	7.4	5.5	4.2	3.7	2.3	1.7
28	7	5.3	4.1	3.6	2.3	1.6
30	6.3	5.1	4	3.3	2.1	1.6
32	5.5	4.9	3.9	3.1	1.9	1.6
34	5.1	4.7	3.8	2.9	1.9	1.6
36	4.7	4.6	3.7	2.7	1.8	1.4
38	4.2	4.6	3.7	2.5	1.7	1.5
40	3.8	4.4	3.7	2.3	1.7	1.4
42	3.5	3.9	3.7	2.2	1.5	1.4
44	3.1	3.6	3.4	2.1	1.5	1.4
46	2.8	3.4	3	2	1.5	1.2
48		3	2.8	1.9	1.5	1.3
50			2.6	1.8	1.3	1.2
52				1.7	1.3	1.2
54					1.3	1.2
56						1.2
Boom combination	22211					
	1					

Main boom: 56.2 m

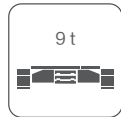
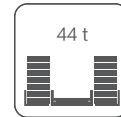
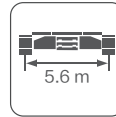
Fixed jib: 11/18.5 m



	56.2+11			56.2+18.5		
	0°	15°	30°	0°	15°	30°
16	8.6					
18	8.4	6.2		3.9		
20	8	6.1	4.4	3.9		
22	7.8	5.9	4.3	3.8	2.8	
24	7.5	5.7	4.3	3.6	2.6	
26	7.3	5.5	4.1	3.6	2.4	1.6
28	7	5.4	4	3.4	2.3	1.8
30	6.3	5.2	4	3.4	2.2	1.7
32	5.6	5	3.8	3.3	2.1	1.6
34	5.1	4.9	3.8	3.1	2	1.5
36	4.7	4.7	3.8	2.9	1.9	1.6
38	4.2	4.2	3.6	2.7	1.8	1.5
40	3.8	3.8	3.5	2.5	1.8	1.4
42	3.6	3.5	3.2	2.3	1.8	1.3
44	3.2	3.2	2.9	2.3	1.6	1.3
46	2.9	3	2.7	2.1	1.6	1.3
48	2.5	2.6	2.3	2.1	1.6	1.3
50		2.3	2.1	1.9	1.5	1.3
52			1.9	1.9	1.4	1.3
54				1.7	1.4	1.3
56					1.4	1.2
58						1.2
Boom combination	00000					
	1					

Main boom: 60.9 m

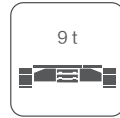
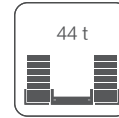
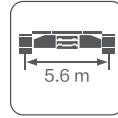
Fixed jib: 11/18.5 m



	60.9+11			60.9+18.5		
	0°	15°	30°	0°	15°	30°
18	7.8					
20	7.6	5.7				
22	7.4	5.5	4.3	3.6		
24	7.2	5.4	4.1	3.6	2.8	
26	6.9	5.2	4.1	3.5	2.6	
28	6.2	5	4	3.4	2.4	1.7
30	5.5	4.9	4	3.3	2.2	1.7
32	5	4.9	3.9	3.2	2.2	1.7
34	4.5	4.5	3.8	3.2	2	1.5
36	4.1	4	3.7	3.1	2	1.5
38	3.8	3.6	3.5	3	1.8	1.6
40	3.4	3.4	3.1	2.8	2	1.4
42	2.9	2.9	2.9	2.6	1.8	1.4
44	2.8	2.7	2.7	2.5	1.6	1.4
46	2.6	2.5	2.3	2.4	1.8	1.3
48	2.4	2.3	2.1	2.2	1.6	1.3
50	2.2	2.1	1.9	2.1	1.4	1.3
52	1.9	1.9	1.7	2	1.4	1.3
54		1.7	1.5	1.8	1.4	1.3
56			1.3	1.7	1.4	1.3
58				1.6	1.4	1.2
60				1.4	1.2	1.2
62				1.1		1.1
Boom combination	21111					
	1					

Main boom: 65 m

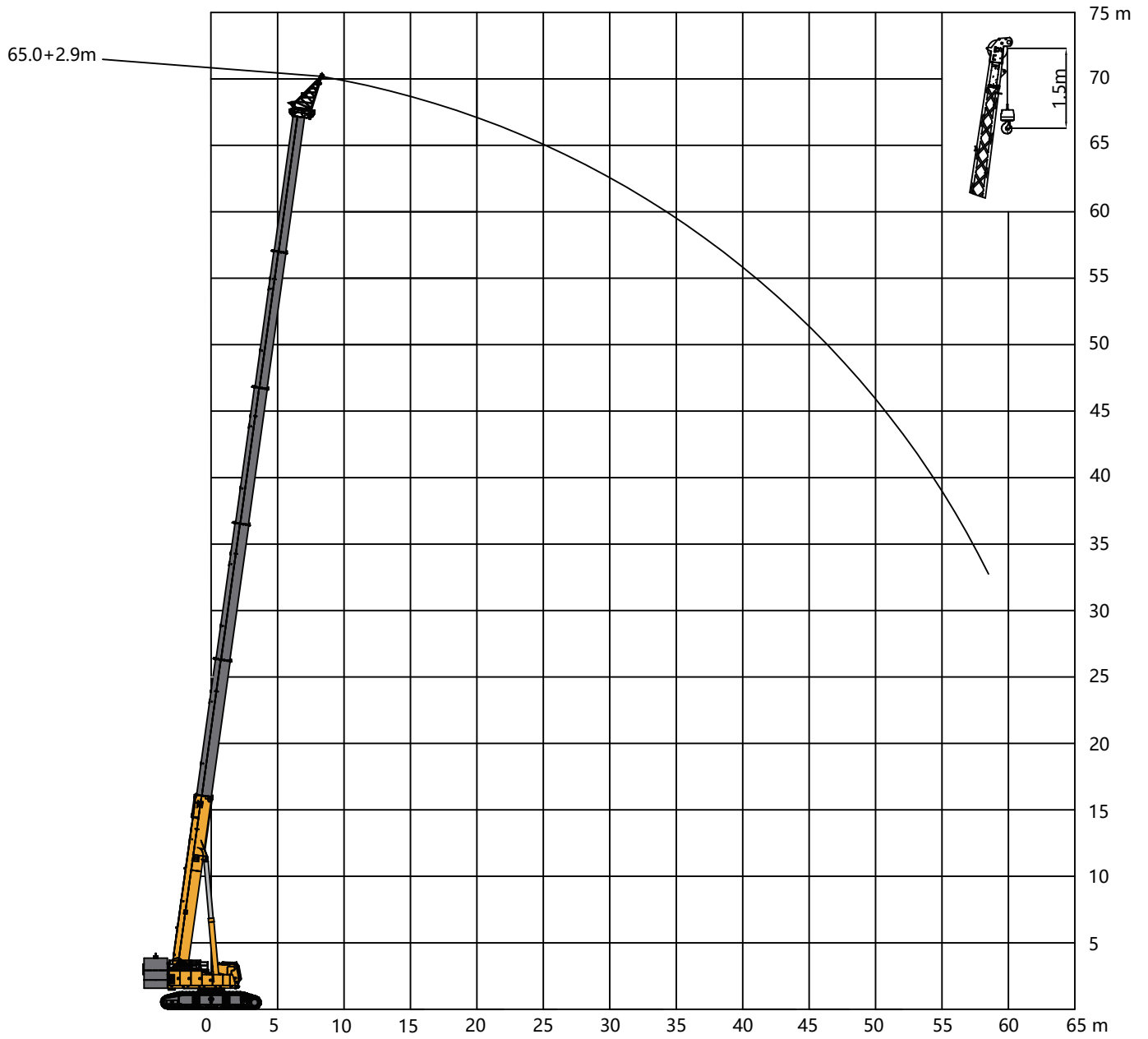
Fixed jib: 11/18.5 m



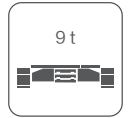
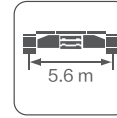
	65+11			65+18.5		
	0°	15°	30°	0°	15°	30°
18	7.4					
20	7.2	5.6				
22	7.1	5.4	4.3	3.4		
24	6.9	5.3	4.3	3.3	2.6	
26	6.3	5.1	4.2	3.3	2.5	
28	5.6	4.9	4.1	3.2	2.4	1.6
30	5	4.8	4.1	3.3	2.3	1.6
32	4.6	4.3	3.9	3.2	2.2	1.6
34	4.1	3.9	3.8	3	2.1	1.6
36	3.7	3.5	3.4	3.1	2	1.4
38	3.3	3.1	3.1	3	1.9	1.4
40	3	2.8	2.8	2.8	1.9	1.4
42	2.7	2.6	2.6	2.7	1.9	1.4
44	2.4	2.4	2.3	2.4	1.7	1.4
46	2.2	2.1	2.1	2.2	1.7	1.4
48	2	1.9	1.9	1.9	1.7	1.3
50	1.8	1.7	1.7	1.7	1.6	1.3
52	1.6	1.5	1.5	1.5	1.5	1.3
54	1.3	1.3	1.3	1.3	1.4	1.3
56	1.1	1.1	1.1	1.2	1.3	1.3
58		0.9	0.9	1.1	1.1	1
60						1
Boom combination	22111					
	1					

HETB

Independent boom head operation mode



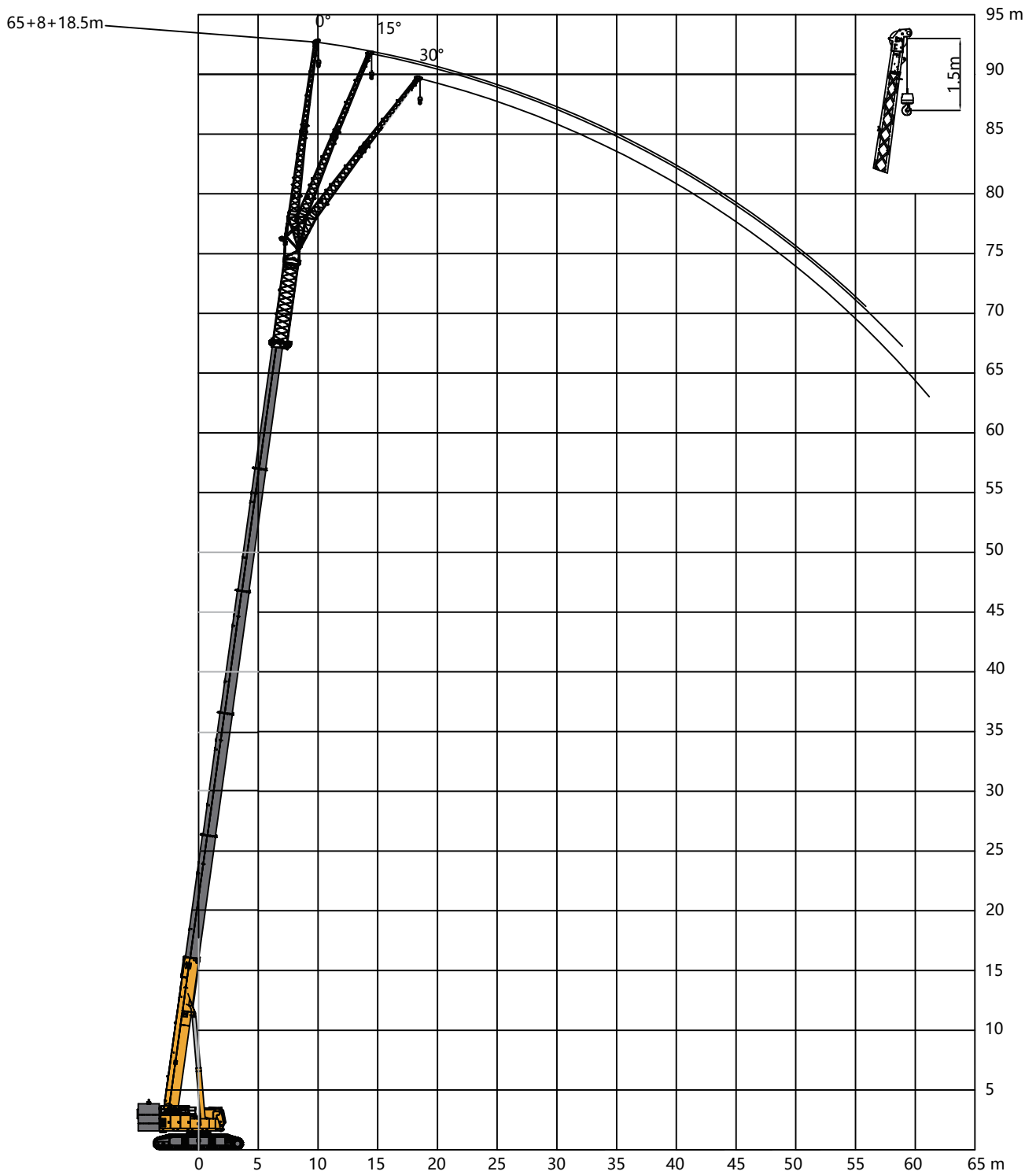
Main boom: 56.2~65 m
Independent boom head: 2.9 m



	56.2	60.9	65	56.2	60.9	65	56.2	60.9	65	56.2	60.9	65	56.2	60.9	65
	0			16			24			34			44		
16	7.1	6.9	6.4	13.6	13.4	12	16.9	15	12	18	15	12	18	15	12
18	5.5	5.4	4.9	11.2	11.1	10.6	14.1	13.9	12	17	14	12	17	14	12
20	4.2	4.1	3.7	9.3	9.3	8.8	11.9	11.8	11.4	15	13.4	12	15	13.4	12
22	3.1	3.1	2.8	7.8	7.8	7.4	10.2	10.1	9.7	13	12	11.5	13	12	11.5
24	2.3	2.3	2	6.6	6.6	6.2	8.7	8.7	8.3	11.4	11.3	11	12	12	11
26	1.6	1.6	1.3	5.5	5.6	5.2	7.5	7.5	7.2	9.9	10	9.6	12	11.6	10.5
28		1.1		4.6	4.7	4.4	6.4	6.5	6.2	8.7	8.8	8.5	11	10.3	9
30				3.8	3.9	3.7	5.5	5.6	5.4	7.7	7.7	7.5	9.8	9.2	8
32				3.2	3.3	3.1	4.8	4.9	4.6	6.8	6.9	6.6	8.7	8.2	6.9
34				2.6	2.7	2.5	4.1	4.2	4	6	6.1	5.8	7.8	7.9	6.8
36				2.1	2.2	2	3.5	3.6	3.4	5.3	5.4	5.2	7	7.2	6.2
38				1.6	1.8	1.6	3	3.1	2.9	4.6	4.8	4.6	6.2	6.5	5.7
40				1.2	1.4	1.2	2.4	2.7	2.5	3.9	4.3	4.1	5.4	5.8	5.4
42					1.1		1.9	2.3	2.1	3.3	3.7	3.6	4.8	5.2	5.1
44							1.4	1.9	1.7	2.8	3.2	3.2	4.2	4.6	4.6
46							1	1.4	1.4	2.3	2.7	2.8	3.6	4	4.1
48								1.1	1.1	1.9	2.3	2.3	3.1	3.5	3.6
50										1.5	1.9	1.9	2.7	3.1	3.1
52											1.5	1.6		2.7	2.7
54											1.2	1.2		2.3	2.3
56															2
58															1.6
Boom combination	22221	22222	33333	22221	22222	33333	22221	22222	33333	22221	22222	33333	22221	22222	33333

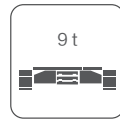
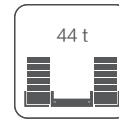
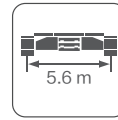
HBEF



Boom extension section operation mode



Main boom: 56.2~65 m

Jib: 8+18.5 m

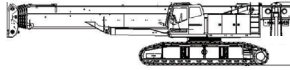


	56.2+8+18.5			60.9+8+18.5			65+8+18.5		
	0°	15°	30°	0°	15°	30°	0°	15°	30°
18	3.6								
20	3.6			3.2					
22	3.6			3.2			3.1		
24	3.5	2.6		3.2			3		
26	3.5	2.5		3.2	2.5		3		
28	3.5	2.4		3.1	2.4		3	2.4	
30	3.4	2.2	1.6	3.1	2.3		3	2.4	
32	3.3	2.1	1.6	3.1	2.2	1.5	3	2.2	1.5
34	3.3	2	1.5	3	2.1	1.5	2.9	2.1	1.5
36	3.1	1.9	1.4	3	1.9	1.4	2.9	2	1.4
38	3	1.8	1.3	3	1.9	1.4	2.9	1.9	1.4
40	2.9	1.8	1.3	2.9	1.8	1.3	2.8	1.9	1.3
42	2.7	1.8	1.3	2.7	1.7	1.3	2.8	1.8	1.3
44	2.5	1.7	1.2	2.6	1.7	1.3	2.8	1.8	1.3
46	2.3	1.5	1.2	2.5	1.7	1.3	2.7	1.7	1.2
48	2.2	1.6	1.2	2.4	1.6	1.2	2.6	1.6	1.2
50	2.1	1.5	1.2	2.2	1.5	1.2	2.5	1.6	1.2
52	2	1.4	1.1	2.1	1.6	1.2	2.4	1.6	1.1
54	2.1	1.5	1.1	2.1	1.5	1.2	2.2	1.6	1.1
56	2	1.4	1.1	2.1	1.4	1.2	1.9	1.4	1.1
58		1.3	1	2	1.5	1.1	1.7	1.4	1.1
60		1.2	1	1.8	1.4	1.1	1.5	1.4	1.1
62			1		1.3	1	1.3	1.3	1
Boom combination 	22221			22222			33333		

Dimensions of transported components

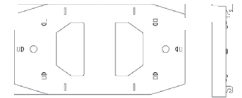
Basic crane

Length	16930 mm
Width	3500 mm
Height	3500 mm
Weight	79200 kg
Qty.	1



Turntable counterweight slab II

Length	4200 mm
Width	2220 mm
Height	500 mm
Weight	8000 kg
Qty.	1



Basic crane (without track frames)

Length	16930 mm
Width	3330 mm
Height	3060 mm
Weight	54200 kg
Qty.	1



Turntable counterweight slab III

Length	2220 mm
Width	1035 mm
Height	785 mm
Weight	5000 kg
Qty.	1



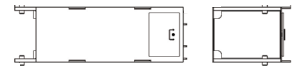
Left track frame

Length	7720 mm
Width	1260 mm
Height	1270 mm
Weight	12530 kg
Qty.	1



Car-body counterweight

Length	2100 mm
Width	750 mm
Height	953 mm
Weight	4500 kg
Qty.	2



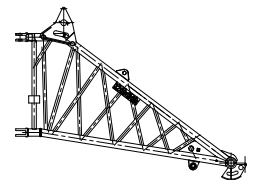
Right track frame

Length	7720 mm
Width	1260 mm
Height	1270 mm
Weight	12530 kg
Qty.	1



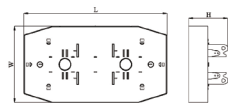
Independent boom head (optional)

Length	3180 mm
Width	2370 mm
Height	920 mm
Weight	475 kg
Qty.	1



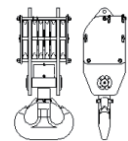
Turntable counterweight slab I

Length	4200 mm
Width	2220 mm
Height	1140 mm
Weight	16000 kg
Qty.	1



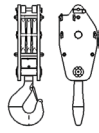
130t hook block

Length	1660 mm
Width	540 mm
Height	680 mm
Weight	1010 kg
Qty.	1



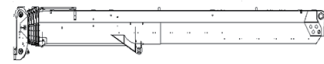
75t hook block (optional)

Length	1660 mm
Width	540 mm
Height	490 mm
Weight	650 kg
Qty.	1



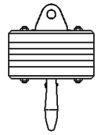
Main boom assembly

Length	14490 mm
Width	1410 mm
Height	1880 mm
Weight	17600 kg
Qty.	1



11t hook block

Length	620 mm
Width	430 mm
Height	430 mm
Weight	260 kg
Qty.	1



Fixed jib assembly

Length	11630 mm
Width	1060 mm
Height	1610 mm
Weight	1750 kg
Qty.	1










8m extension section (optional)

Length	620 mm
Width	430 mm
Height	430 mm
Weight	260 kg
Qty.	1



Symbols

	<p>Longest main boom</p>		<p>Turntable counterweight</p>
	<p>Working radius</p>		<p>Rated lifting capacity</p>
	<p>Parts of line</p>		<p>Track width</p>
	<p>360° slewing</p>		

Construction cases



XTC160 crawler crane

Due to the need for continuous product improvement, we reserve the right to make changes to product models, parameters and configurations. For the latest technical information of the product, please consult your sales manager.

The pictures are for reference only, and the specific product is subject to the actual product. The product in the picture may not be standard configuration, and some components may need to be purchased separately.



XUZHOU CONSTRUCTION MACHINERY GROUP IMP.& EXP. CO., LTD

Address: No.1, Tuolanshan Road, Xuzhou
Economic Developing Zone, Jiangsu, China 221004
Tel: +86(0)516 8773 9703
Fax: +86(0) 516 8773 9230
E-Mail: europe@xcmg.com



XCMG CRANE



XCMGCRANE.OFFICIAL



This document does not constitute a dry contract. Due to the need for continuous product improvement, we reserve the right to make changes to product models, parameters, and configurations without prior notice. The pictures are for reference only, and the specific product is subject to the actual product. The product in the picture may not be standard configuration, and some components may need to be purchased separately. Applying for a license plate and driving on the road must comply with local regulations.