






Crawler Crane

# XLC260

-  Max 260t
-  86m
-  56+63m

## Company Introduction

XCMG Crane Machinery is one of the core business divisions of XCMG Group, which is the pioneer, leader and developer of China's lifting machinery, specializing in the research, development and manufacture of mobile cranes. With science and technology innovation as the core driving force, the company is committed to providing digitalized and complete sets of solutions for the healthy and sustainable development of the global lifting industry chain.

XCMG Crane Machinery has a comprehensive product spectrum, including 5-ton to 220-ton truck cranes, 40-ton to 4,000-ton all-terrain cranes, 25-ton to 150-ton rough terrain cranes, 30-ton to 160-ton telescopic boom crawler cranes, and 45-ton to 4,000-ton lattice boom crawler cranes, and its products are sold well in more than 190 countries and regions, and has ranked No. 1 among the world's mobile crane manufacturers for the past two years. The export share of China's cranes has always maintained a leading position.





业智能制造基地

# R&D center

## Global Collaborative R&D System

China, Europe, North America, Brazil, Australia

We have set up several R&D centers around the world, focusing on researching the regulatory requirements and customer needs in different regional markets, and developing specialized regional models to better meet the use habits and needs of customers in different regions.



XCMG European R&D Center



XCMG North American R&D Center



XCMG Research Institute



XCMG Brazil R&D Center



XCMG Australia R&D Center

# R&D Results

Specialized, deep-rooted crawler crane R&D for 30 years, broken through nearly a hundred core technologies

Meet regional access, series of products through the European Union CE certification, Customs Union EAC certification, North American certification, etc.

1770 effective patents, including 909 invention patents (including 89 overseas authorizations), 165 effective software copyrights



## Intelligent manufacturing



Welding robot



Web tube robot



Automatic loading of bearing rollers



Fine coating



Intelligent warehousing an transportation



Complete machine testing

# Global Services

XCMG has globally

**30家** Subsidiaries    **40个** Sales offices    **40个** Spare parts centers

**300+个** Distributors    **2000+个** Service Locations

**5000+个** Service engineers    **1500个** Dedicated service facilities

XCMG video



**Regularly enjoy XCMG Crane Machinery Global Service Experience the convenience and comfort of having XCMG by your side.**

Provide customers with door-to-door equipment inspection, product maintenance and operation guidance training. Service cell phone APP installation and guidance, saving customer operating costs.



▲ South east Asia service



▲ service in Indonesia



▲ service for central Asia



▲ service for Africa

# CONTENTS

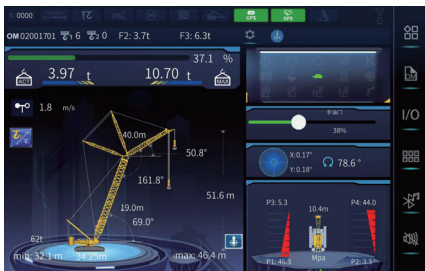
<b>Product highlights</b> .....	<b>07</b>
<b>Disassembly and assembly solutions</b> .....	<b>10</b>
<b>Dimensional parameters</b> .....	<b>11</b>
<b>Technical specifications</b> .....	<b>13</b>
<b>Main technical parameters</b> .....	<b>16</b>
<b>Operation modes and lifting performance</b> .....	<b>17</b>
<b>Dimensions of transport components</b> .....	<b>38</b>



# 01 Technology Leadership

## Integrated Machine Control System

- ▶ Intelligent, secure, and reliable all-in-one control system, real-time parameters such as load, ground pressure, boom length, etc.



## Human-Machine Synergy

- ▶ The main and auxiliary hooks work simultaneously, making operation more convenient; Parallel work reduces waiting time and accelerates project progress.



## Classified Loading

- ▶ Equipped with graded load mode, it provides a variety of lifting operation modes to choose from, which is convenient for the construction of trestle and other weight-restricted occasions, and better adaptability to operation modes.



# 02 Operationals Economics

## Self-disassembly/assembly technology

- ▶ Optional fully self-assembling and disassembling function, realizing intelligent remote control installation of counterweight self-lifting, making disassembly and assembly more convenient and effortless.



Crawler Frame Self-Handling



One-Button Mast Raising

## The extended outrigger

- ▶ Cylinder enables the basic crane to be lifted 1.3m off the ground without the need for assistance. The basic crane can be transported by a 1.2m trailer with a transportation width of less than 3m and a height of less than 4.5m, making it accessible for global transportation.



## Integrated design of boom

- ▶ Triple insertion for transportation, save over 15% on transportation costs.




Boom Configuration Transportation



# 03 Safe and reliable

- ▶ **Fault self-diagnosis system:** real-time localization of abnormalities, troubleshooting efficiency increased by 50%.
- ▶ **Reliable quality system:** whole-life structural safety design technology, first-class manufacturing equipment.



**Height limiter**

Position limiting safe and reliable, can effectively prevent over-wound.

**Anemometer height mark lamp**

Severe weather automatically triggers sound and light alarms.

**Hook latch**

Prevent the hook from falling off the boom due to unexpected situations during the lifting process to avoid safety accidents.

**Rope over-released protection device**

Check the rope allowance to avoid loss of control due to full release.

**Emergency stop switch**  
(Mechanical + Programming + Limit Switches) for faster emergency response.

**Real time monitor**

The operating status of the hoisting, luffing and hook mechanisms is at your fingertips.

# 04 Enjoy Comfort Human machine collaboration, worry free and labor-saving Big field of view cab, good human-machine experience

▶ Glass accounts for over 80%, providing a panoramic view; Effective sound insulation achieves indoor quietness.

▶ The back storage space is upgraded with a space capsule design for storing work and personal belongings, fully sealed; a cell phone storage box is designed in the right line of sight, so you can store it anywhere.



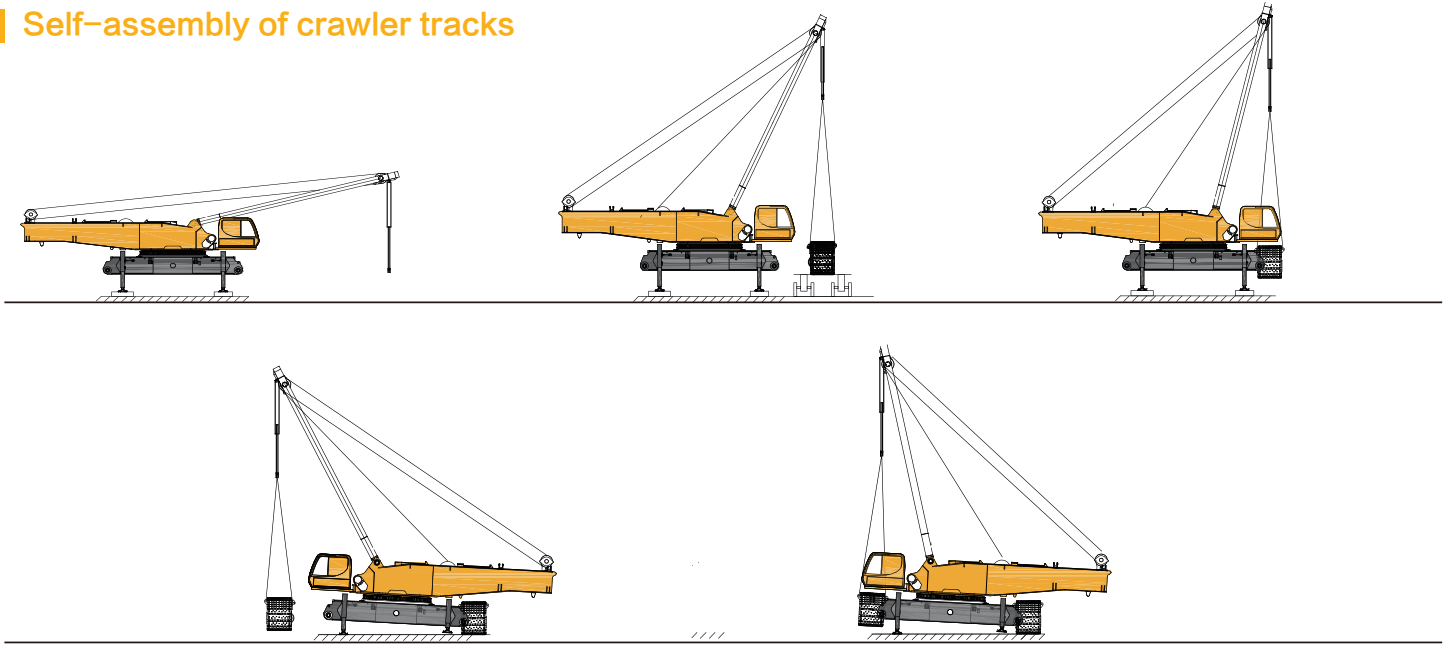
▶ Extra wide cab, equipped with suspension seat, adjustable height and angle, to reduce the burden on the operator's back; the seat can be heated, ultra-light textile cotton extremely breathable, adapt to multi-environmental weather.

▶ Joystick with ergonomic design, comfortable grip; sensitive and direct function, can precisely control the action; optimized button and switch design, fast linkage operation control.

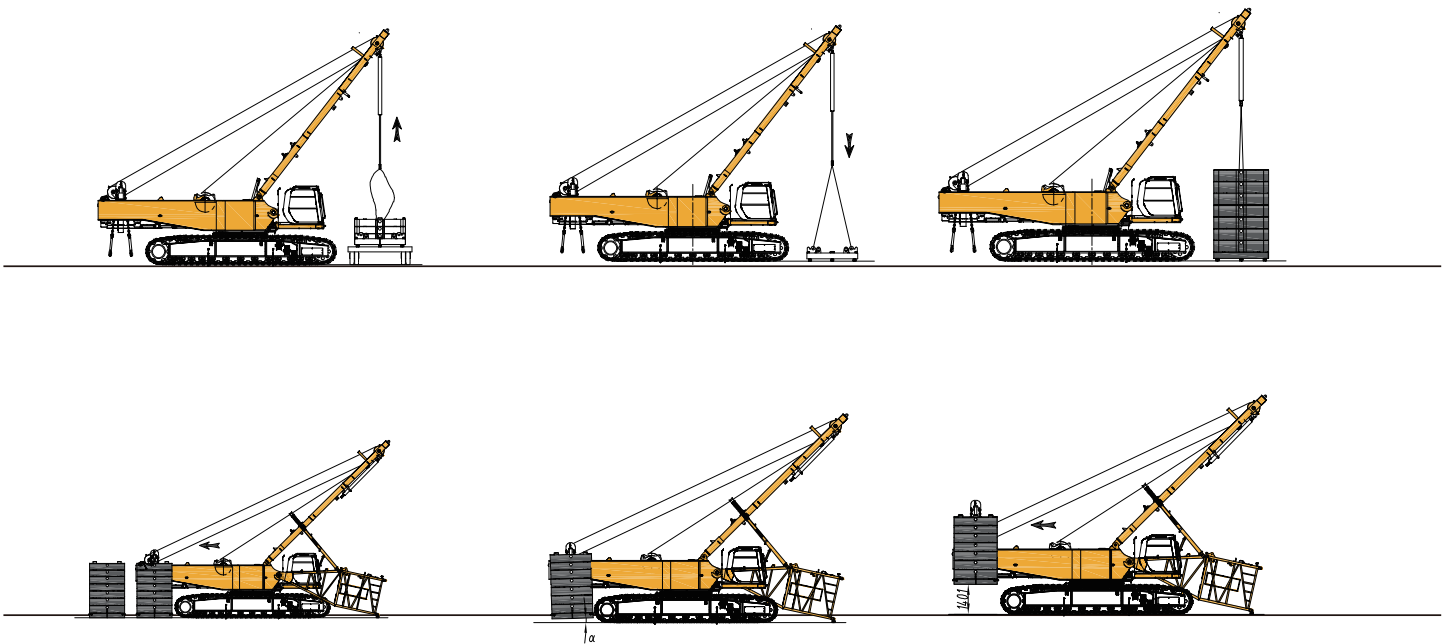


# Disassembly and assembly plan(optional)

## 1 Self-assembly of crawler tracks



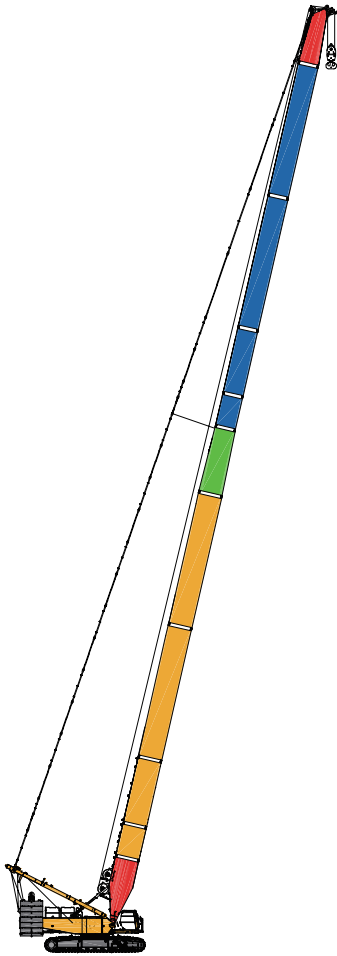
## 2 Self-assembly of counterweight



# Main technical parameters

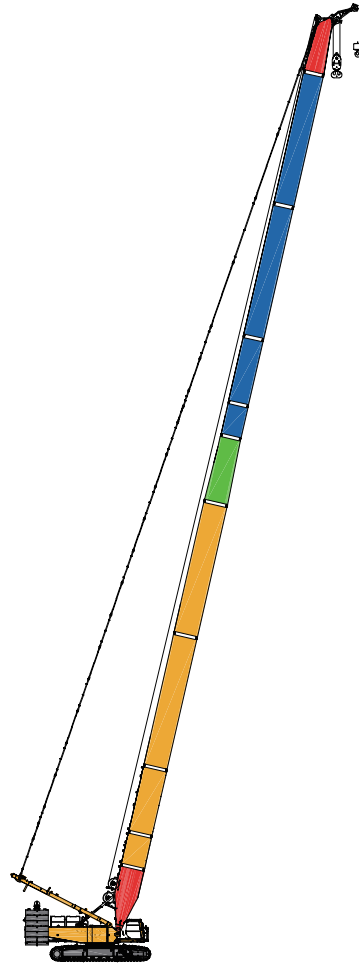
Item	Unit	Value	
Max. rated lifting capacity	t	260	
Max. lifting moment t·m	t·m	1430	
Working condition combinations	Heavy duty main boom operation mode	m	23~86
	Tower jib operation mode	m	18~63
	Fixed jib operation mode	m	9~30
	TBM operation mode (two hooks combined lifting)	m	23+9/26+9
	Boom single pulley operation mode	m	1.6
	Light duty boom operation mode	m	25.5~97.5
Speed parameters	Max. single line speed for hoisting system	m/min	130
	Max. single line speed for luffing system	m/min	2×47
	Max. single line speed of tower jib luffing	m/min	130
	Max. slewing speed	rpm	1.0
	Max. travel speed	km/h	1.0
Overall crane weight (23m heavy duty main boom, 260t hook)	t	228.2	
Average ground pressure	MPa	0.12	
Grade	%	30	

# Operation modes and lifting performance



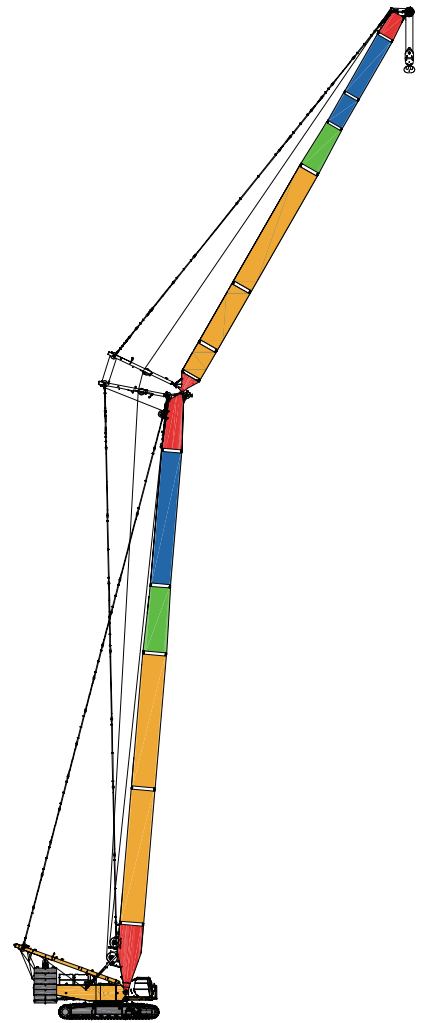
**Heavy duty  
main boom  
operation mode  
HB**

Main boom: 23~86 m



**Boom single pulley  
operation mode  
HBS**

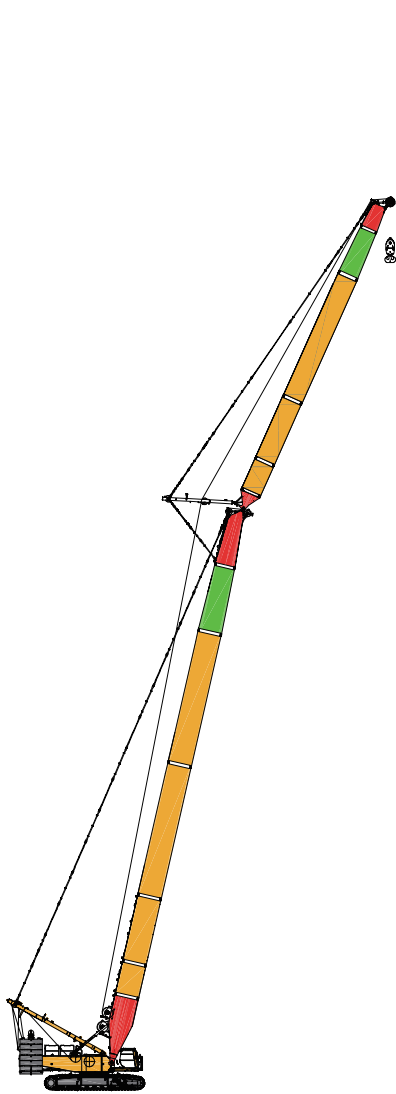
Main boom: 23~86 m  
Boom end single pulley: 1.6m



**Tower jib  
operation mode  
HW**

Main boom: 20 ~ 56 m  
Jib: 18 ~ 63 m

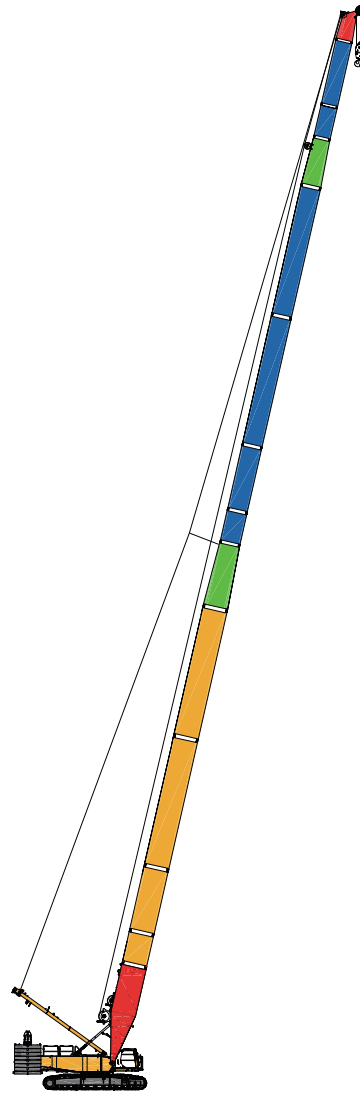
# Operation modes and lifting performance



**Fixed jib  
operation mode**

**HF**

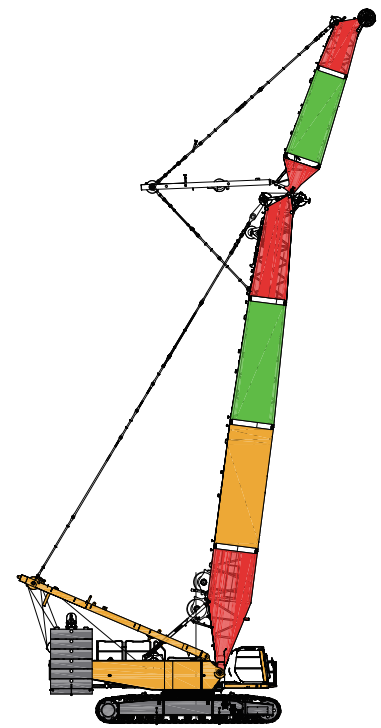
Main boom: 23~68 m  
Jib: 9~30 m



**Light duty  
main boom  
operation mode**

**LB**

Main boom: 25.5~97.5 m



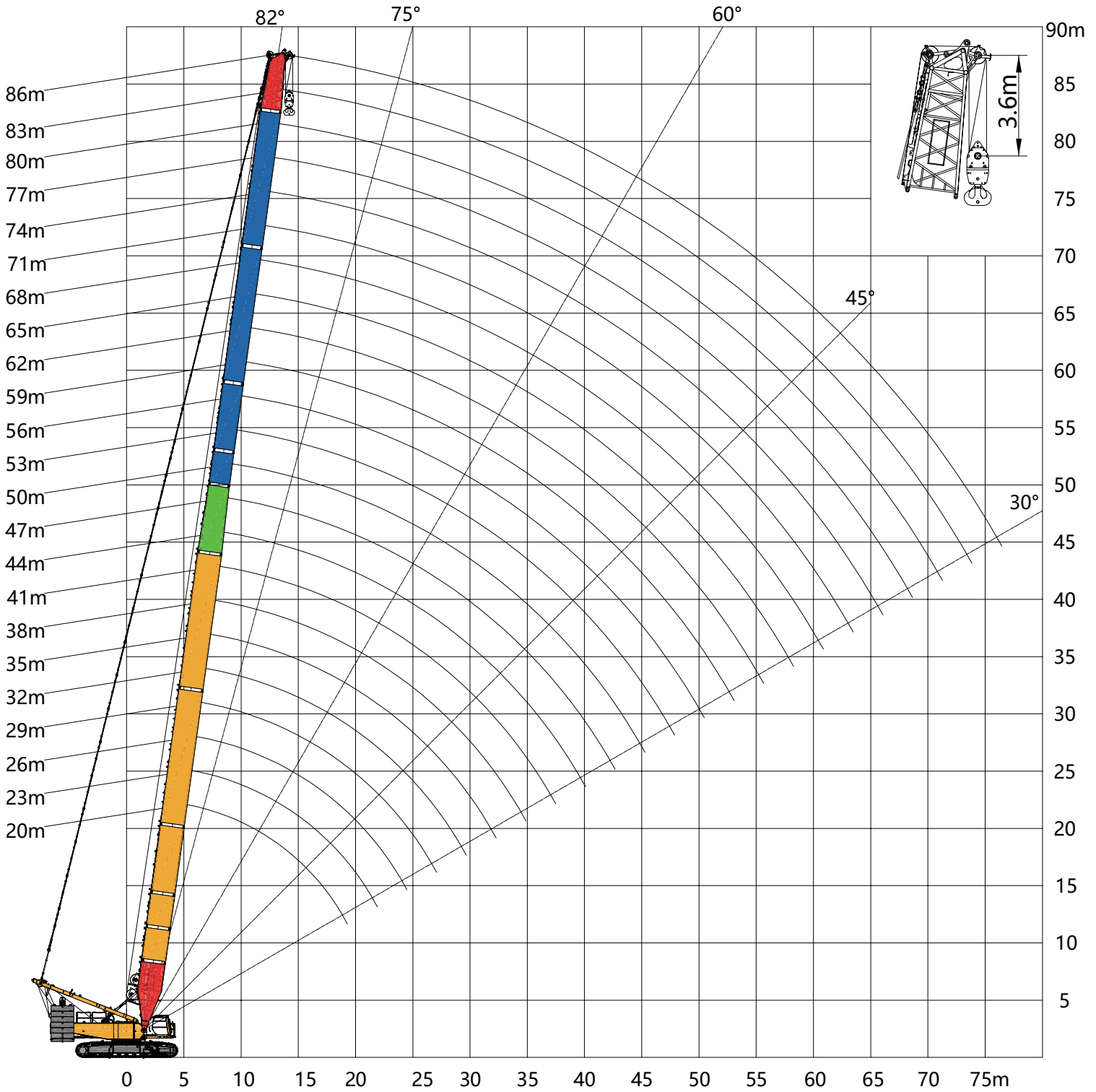
**TBM jib  
operation mode**

**HBF**

Main boom: 23~26 m  
Jib: 9 m

# HB

Heavy duty main boom working condition



HB


Main boom combinations

Boom length \ Boom combination code	①	②	③	④	⑤	⑦	⑧	⑨	⑥
23m	1	1			1				1
26m	1		1		1				1
29m	1	1	1		1				1
32m	1			1	1				1
35m	1	1		1	1				1
38m	1		1	1	1				1
41m	1	1	1	1	1				1
44m	1			2	1				1
47m	1	1		2	1				1
50m	1		1	2	1				1
53m	1	1	1	2	1				1
56m	1			2	1			1	1
59m	1	1		2	1			1	1
62m	1		1	2	1			1	1
65m	1	1	1	2	1			1	1
68m	1	1	1	2	1	1		1	1
71m	1	1	1	2	1		1	1	1
74m	1	1	1	2	1	1	1	1	1
77m*	1	1	1	2	1			2	1
80m*	1	1	1	2	1	1		2	1
83m*	1	1	1	2	1		1	2	1
86m*	1	1	1	2	1	1	1	2	1

- Notes: 1. Please refer to the appendix on the last page for details of boom combination codes.
- 2. "\*" main boom combination requires the use of center hitch.
- 3. Tower jib rear pendants needs to be removed for each boom section and guide pulley for tower jib must be removed from the top section of main boom.

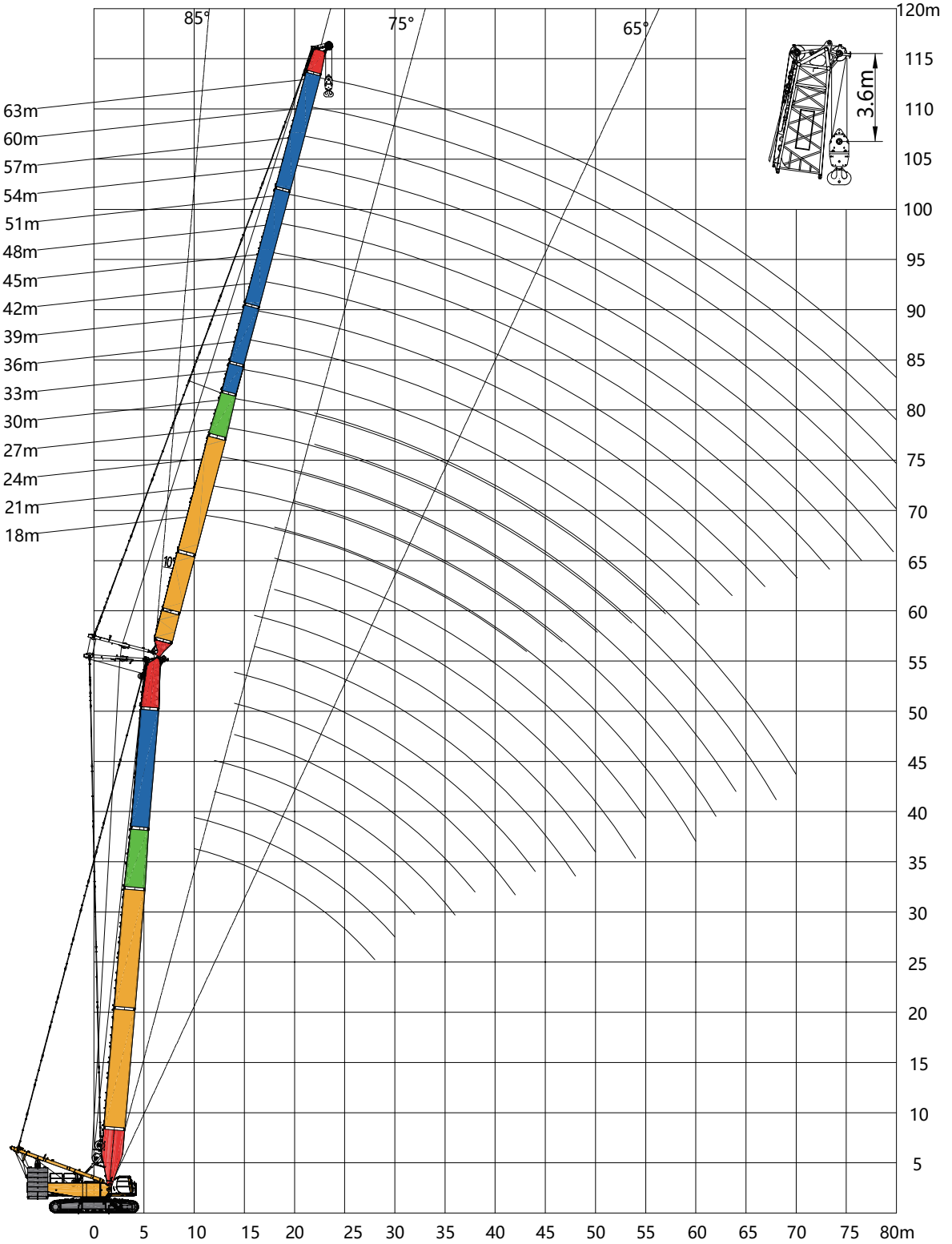
# Main boom: 23~86 m



	23	26	29	32	35	38	41	44	47	50	53	56	59	62	65	68	71	74	77	80	83	86	
5.5	260																						
6	230.9	230.9	215.9																				
7	191.1	191.1	191	191	183.9	172.9																	
8	162.7	162.7	162.6	162.6	162.4	162.3	161.7	150.4															
9	141.5	141.5	141.3	141.4	141.2	141	140.8	139.1	135.5	127.2	127.2												
10	125	125	124.8	124.8	124.6	124.5	124.3	124.2	121.2	118.3	115.6	113.2	108.7	98.4									
11	111.8	111.8	111.6	111.6	111.4	111.3	111	111	109.4	107	104.7	102.7	100.6	97.5	88.6	79.4	71.6						
12	101	101	100.8	100.8	100.6	100.5	100.2	100.1	99.7	97.6	95.5	93.9	92	90.2	86.7	77.6	69.8	62.8	61.2	56			
13	91.9	92	91.8	91.8	91.6	91.5	91.2	91.1	90.9	89.6	87.8	86.4	84.7	83.1	81.5	76.4	68.7	61.8	60.4	55.3	50.8	46.6	
14	84.3	84.3	84.2	84.2	84	83.8	83.6	83.5	83.3	82.7	81.1	79.9	78.4	76.8	75.4	74.1	67.5	60.7	59.5	54.6	50.1	46	
15	77.9	77.9	77.7	77.7	77.5	77.3	77.1	76.9	71.6	71.4	71.1	71.3	71	70.8	70.2	68.9	66.5	59.7	58.7	53.8	49.4	45.4	
16	72.4	72.4	72.2	72.2	72	71.9	71.6	71.5	71.2	71	70.1	69.3	68	66.8	65.6	64.4	63.4	58.7	58	53.1	48.8	44.8	
17	67	67.1	67.1	67.1	67	66.9	66.8	66.7	66.4	66.2	65.6	64.8	63.7	62.6	61.5	60.4	59.4	57.7	57.2	52.4	48.1	44.2	
18	61.9	62	62	62	61.9	61.8	61.7	61.6	61.4	61.3	61.1	60.9	59.8	58.8	57.8	56.7	55.9	54.9	54.1	51.7	47.5	43.6	
19	57.4	57.6	57.5	57.6	57.5	57.4	57.2	57.1	57	56.8	56.6	56.8	56.3	55.4	54.4	53.5	52.7	51.7	51	50.1	46.9	43	
20	53.5	53.6	53.6	53.7	53.6	53.5	53.3	53.2	53	52.9	52.7	52.8	52.6	52.3	51.4	50.5	49.7	48.9	48.2	47.4	46.2	42.5	
22		47.1	47	47.1	47	46.9	46.7	46.6	46.4	46.3	46.1	46.2	46	45.8	45.6	45.3	44.7	43.9	43.3	42.5	41.9	41.1	
24		41.7	41.7	41.8	41.7	41.6	41.4	41.3	41.1	41	40.7	40.9	40.7	40.5	40.3	40	39.9	39.6	39.2	38.4	37.8	37.1	
26			37.3	37.4	37.3	37.2	37	37	36.8	36.6	36.4	36.5	36.3	36.1	35.9	35.6	35.5	35.3	35.2	34.9	34.4	33.7	
28				33.8	33.6	33.6	33.4	33.3	33.1	32.9	32.7	32.9	32.6	32.4	32.2	31.9	31.8	31.6	31.5	31.3	31.1	30.7	
30					30.5	30.4	30.2	30.2	30	29.8	29.6	29.7	29.5	29.3	29.1	28.8	28.7	28.4	28.4	28.1	28	27.7	
32					27.8	27.7	27.5	27.5	27.3	27.1	26.9	27.1	26.8	26.6	26.4	26.1	26	25.7	25.7	25.4	25.4	25	
34						25.4	25.2	25.2	24.9	24.8	24.5	24.7	24.5	24.3	24	23.8	23.6	23.4	23.3	23.1	22.9	22.6	
36							23.1	23.1	22.9	22.7	22.5	22.7	22.4	22.2	22	21.7	21.6	21.3	21.3	21	20.8	20.6	
38								21.3	21.1	20.9	20.7	20.9	20.6	20.4	20.1	19.9	19.7	19.5	19.4	19.2	19	18.7	
40									19.6	19.4	19.3	19	19.2	19	18.8	18.5	18.3	18.1	17.9	17.8	17.5	17.1	
42										18	17.8	17.6	17.8	17.5	17.3	17.1	16.8	16.7	16.4	16.4	16.1	15.9	15.6
44											16.5	16.2	16.5	16.2	16	15.7	15.5	15.3	15.1	15	14.8	14.6	14.3
46												15	15.3	15	14.8	14.5	14.3	14.2	13.9	13.8	13.6	13.4	13.1
48													14.2	13.9	13.7	13.5	13.2	13.1	12.8	12.8	12.5	12.3	12
50														13.2	12.9	12.7	12.5	12.2	12.1	11.8	11.8	11.5	11
52															12	11.8	11.5	11.3	11.2	10.9	10.8	10.6	10.1
54																10.9	10.7	10.4	10.3	10	10	9.7	9.3
56																	9.9	9.7	9.5	9.3	9.2	8.9	8.5
58																		9.2	8.9	8.8	8.5	8.5	8.1
60																			8.2	8.1	7.9	7.8	7.5
62																				7.5	7.2	7.2	6.9
64																					6.6	6.6	6.3
66																					6.1	6	5.8
68																						5.5	5.3
70																							4.8
72																							4.8
74																							4.1
76																							3

# HW

Tower jib operation mode



# HW

## Main boom combinations

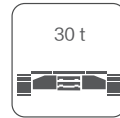
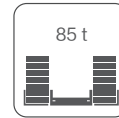
Boom combination code	①	②	③	④	⑤	⑨	⑥
23m	1	1			1		1
26m	1		1		1		1
29m	1	1	1		1		1
32m	1			1	1		1
35m	1	1		1	1		1
38m	1		1	1	1		1
41m	1	1	1	1	1		1
44m	1			2	1		1
47m	1	1		2	1		1
50m	1		1	2	1		1
53m	1	1	1	2	1		1
56m	1			2	1	1	1

## Jib combination

Boom combination code	⑮	⑦	⑧	⑨	⑩	⑪	⑫	⑬	⑭
18m	1	1	1		1				1
21m	1	1	1		1	1			1
24m	1	1	1		1		1		1
27m	1	1		1	1	1			1
30m	1	1	1	1	1				1
33m	1	1	1	1	1	1			1
36m	1	1	1	1	1		1		1
39m	1	1	1	1	1	1	1		1
42m	1	1	1	1	1			1	1
45m	1	1	1	1	1	1		1	1
48m	1	1	1	1	1		1	1	1
51m*	1	1	1	1	1	1	1	1	1
54m*	1	1	1	1	1			2	1
57m*	1	1	1	1	1	1		2	1
60m*	1	1	1	1	1		1	2	1
63m*	1	1	1	1	1	1	1	2	1

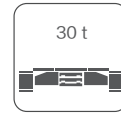
- Notes: 1. Please refer to the appendix on the last page for details of boom combination codes.  
 2. "\*" Tower jib lengths require the use of a center hitch .  
 3. Tower jib rear pendant need to be installed on boom sections. Jib guide pulley need to be installed on boom top.  
 4. The use of a tilting wedge is recommended for combination length of boom and tower jib more than 71m.

# WJ Main boom: 23~41 m Jib: 18~63 m



m	23						29						35						41					
	18	27	36	45	54	63	18	27	36	45	54	63	18	27	36	45	54	63	18	27	36	45	54	63
10	100																							
11	98.5						97.9						97.4											
12	96.9	96.2					96.3						95.8						94.4					
13	88.6	87.9					88.1	87.4					87.6	86					86.9					
14	81.6	80.9					80	79.6					80.6	79.9					80	76.9				
15	75.3	74.8	74.2				72.6	72.1	72				73	72.4					74.1	72				
16	69.1	68.6	68.3				66.4	65.8	65.5				66.4	65.9	65.6				67.7	67	62.1			
17	63.9	63.3	62.9	60.3			61.1	60.6	60.2				61	60.4	60				61.9	61.2	60.3			
18	59.4	58.7	58.3	58			56.6	56	55.6	55.3			56.3	55.7	55.2	52.1			57	56.3	55.8			
19	55.4	54.8	54.3	53.9	42.7		52.7	52.1	51.6	51.2			52.2	51.7	51.1	50.7			52.8	52.1	51.5	46.1		
20	51.8	51.3	50.8	50.2	41.9		49.2	48.7	48.2	47.6	40.8		48.7	48.2	47.6	47.1	39.4		49.1	48.5	47.9	44.9		
22		45.4	44.9	44.3	40.4	29.8	43.2	42.9	42.4	41.8	39.5	29.3	42.7	42.3	41.8	41.1	38.3		42.9	42.4	41.8	41.1	35.3	
24		40.7	40.1	39.5	39	28.2		38.3	37.8	37.1	36.6	28.2		37.6	37.1	36.4	35.9	27.6		37.6	37	36.3	33.8	26.9
26		36.7	36.2	35.5	35	26.7		34.5	34	33.3	32.8	26.8		33.8	33.3	32.6	32	26.7		33.7	33.2	32.4	31.8	26.1
28		33.5	33	32.3	31.7	25.4		31.3	30.8	30.1	29.6	25.4		30.6	30.1	29.4	28.8	25.5		30.4	30	29.2	28.6	25.2
30		30.6	30.2	29.5	28.9	24.2		28.5	28.2	27.5	26.9	24.3		27.8	27.5	26.7	26.1	24.3		27.7	27.2	26.5	25.9	24.3
32			27.8	27.1	26.5	23.1			25.8	25.1	24.6	23.2			25.2	24.4	23.9	23			24.9	24.2	23.6	22.7
34			25.7	25	24.4	22.1			23.8	23.2	22.6	21.7			23.1	22.5	21.9	21			22.9	22.2	21.6	20.7
36			23.8	23.2	22.6	21.2			22.1	21.4	20.8	20			21.4	20.7	20.1	19.3			21.1	20.5	19.9	19
38			22.2	21.5	21	20.1			20.5	19.8	19.3	18.5			19.8	19.2	18.6	17.8			19.6	18.9	18.3	17.5
40				20.1	19.5	18.7				18.5	17.9	17.1			18.4	17.8	17.3	16.4			18.1	17.5	17	16.1
42				18.8	18.2	17.4				17.2	16.7	15.9				16.6	16	15.2				16.3	15.8	14.9
44				17.6	17	16.2				16.1	15.6	14.8				15.5	14.9	14.1				15.2	14.7	13.8
46				16.5	16	15.2				15	14.6	13.8				14.5	14	13.2				14.2	13.7	12.8
48					15	14.2				14.1	13.6	12.8				13.5	13	12.3				13.3	12.8	12
50					14.1	13.3					12.8	12					12.2	11.4					11.9	11.1
52					13.3	12.5					12	11.2					11.5	10.7					11.2	10.4
54					12.5	11.8					11.3	10.5					10.7	10					10.5	9.7
56					11.8	11.1					10.6	9.9					10.1	9.3					9.8	9.1
58						10.4						9.3						8.7						8.5
60						9.8						8.7						8.2						7.9
62						9.2						8.1						7.7						7.4
64						8.7						7.6						7.2						6.9
66																		6.5						6.4

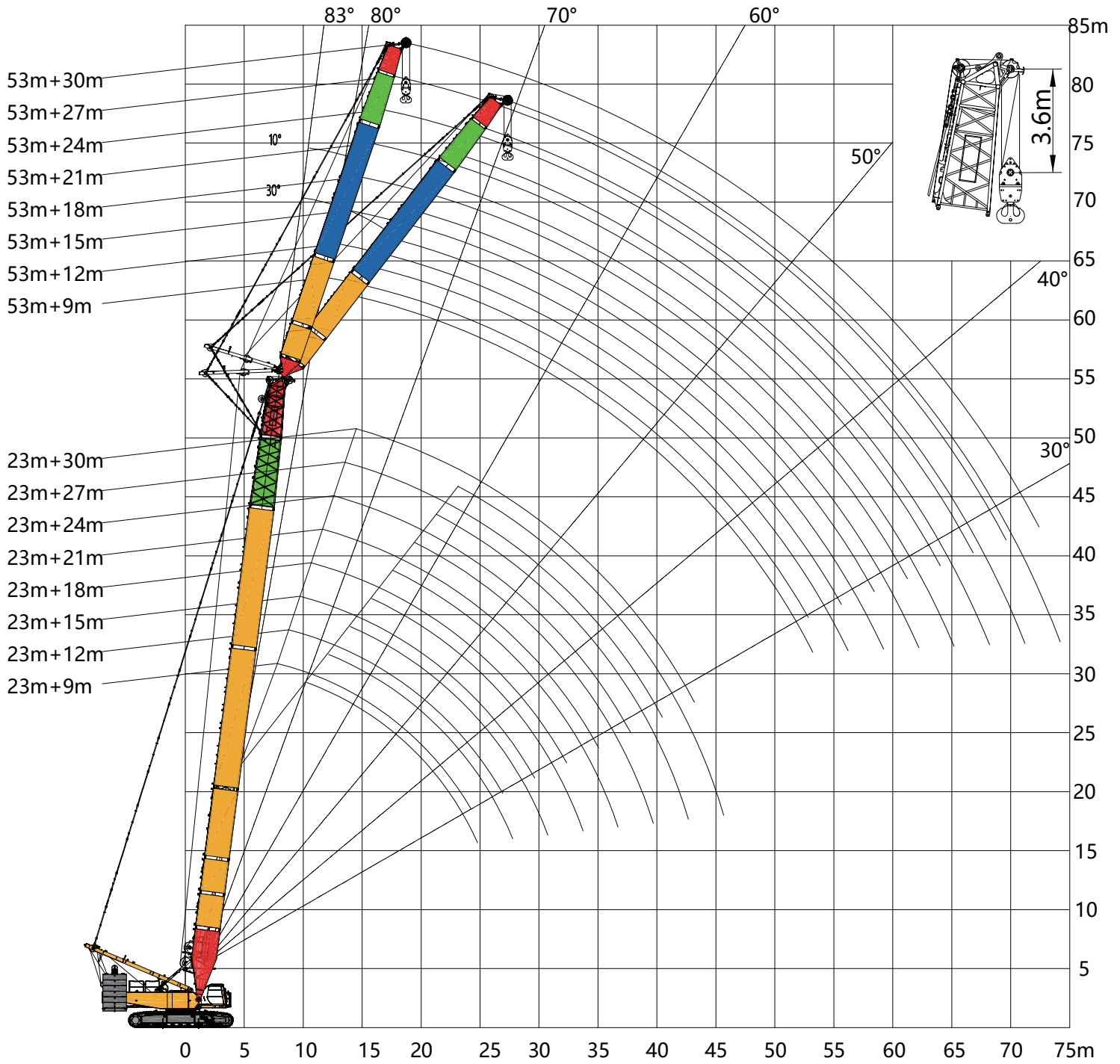
# WJ Main boom: 47~56 m Jib: 18~63 m



	47						53						56					
	18	27	36	45	54	63	18	27	36	45	54	63	18	27	36	45	54	63
12	90.1																	
13	83.7						76.4						66.9					
14	78.1	71.2					73.6						63.9					
15	73.2	69.1					70.2	60.5					58.8	52.3				
16	68.5	65.2					66.2	58.4					54.5	51.1				
17	63.5	61.6	53.3				62.6	56.2	47				50.8	49.3				
18	58.3	57.6	51.7				59.3	53.9	45.7				47.6	47.2	40			
19	53.8	53.1	50	41.2			55.2	51.5	44.3				44.7	44.3	38.8			
20	49.9	49.3	48.2	40.2			51.1	49.2	42.8	35.9			42.2	41.7	37.6	31.5		
22	43.5	43	42.3	38.1	31.9		44.3	43.7	39.8	34	28.7		37.8	37.4	35	29.9	25.2	
24		38	37.4	35.8	30.5	25.1	38.9	38.6	36.7	32.1	27.5	22.7	34.3	33.9	32.3	28.2	24.1	
26		34	33.4	32.6	29.1	24.2		34.4	33.8	30	26.1	21.9		30.9	29.8	26.4	22.9	19.2
28		30.6	30.1	29.3	27.5	23.3		30.9	30.4	28	24.8	21		28.4	27.3	24.6	21.7	18.4
30		27.8	27.3	26.5	25.9	22.2		28	27.5	26	23.3	20.1		26.3	25	22.9	20.5	17.6
32		25.3	25	24.2	23.5	21.2		25.5	25.1	24.1	22	19.1		23.9	22.9	21.2	19.2	16.7
34			22.9	22.2	21.5	20.1			23	22.2	20.6	18.1			20.9	19.6	18	15.9
36			21.1	20.4	19.8	18.9			21.2	20.5	19.2	17.2			19	18.1	16.8	15
38			19.5	18.8	18.2	17.3			19.6	18.9	18	16.2			17.4	16.7	15.7	14.1
40			18.1	17.5	16.9	16			18	17.5	16.7	15.3			15.9	15.4	14.6	13.3
42				16.2	15.6	14.8				16.2	15.6	14.3				14.2	13.6	12.5
44				15.1	14.5	13.7				14.9	14.5	13.5				13	12.6	11.7
46				14.1	13.6	12.7				13.8	13.5	12.6				12	11.7	10.9
48				13.2	12.6	11.8				12.7	12.5	11.8				11.1	10.9	10.2
50					11.8	11				11.7	11.6	10.9				10.2	10.1	9.5
52					11.1	10.3					10.8	10.2					9.3	8.9
54					10.3	9.6					10	9.5					8.7	8.3
56					9.7	8.9					9.3	8.9					8	7.7
58					9.1	8.3					8.7	8.3					7.4	7.2
60						7.8						7.7						6.7
62						7.3						7.2						6.2
64						6.8						6.7						5.8
66						6.3												5.1

# HF

固定副臂工况



# HF

## Main boom combinations

Boom combination code / Boom length	①	②	③	④	⑤	⑦	⑨	⑥
23m	1	1			1			1
26m	1		1		1			1
29m	1	1	1		1			1
32m	1			1	1			1
35m	1	1		1	1			1
38m	1		1	1	1			1
41m	1	1	1	1	1			1
44m	1			2	1			1
47m	1	1		2	1			1
50m	1		1	2	1			1
53m	1	1	1	2	1			1
56m	1			2	1		1	1
59m	1	1		2	1		1	1
62m	1		1	2	1		1	1
65m	1	1	1	2	1		1	1
68m	1	1	1	2	1	1	1	1

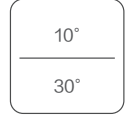
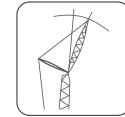
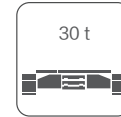
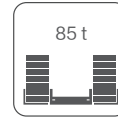
## Jib combination

Boom combination code / Boom length	⑮	⑦	⑧	⑨	⑩	⑪	⑫	⑭
9m	1				1			1
12m	1	1			1			1
15m	1	1			1	1		1
18m	1	1	1		1			1
21m	1	1	1		1	1		1
24m	1	1	1		1		1	1
27m	1	1		1	1	1		1
30m	1	1	1	1	1			1

- Notes: 1. Please refer to the appendix on the last page for details of boom combination codes.  
 2. The tower jib rear pendants needs to be removed for each boom section.  
 3. When boom and jib combination length exceeds 71m, it is suggested to use wedge block to assist boom raising.

# HF

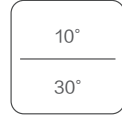
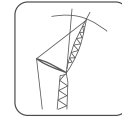
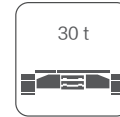
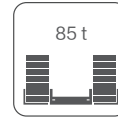
## Main boom: 23m Jib: 9~30 m



	9		12		15		18		21		24		27		30	
	10°	30°	10°	30°	10°	30°	10°	30°	10°	30°	10°	30°	10°	30°	10°	30°
8	100															
9	98.3		76.5		72.5											
10	91.1		71.3		67.1											
11	84.9	66.9	66.7		62.4		55.7									
12	79.4	64.2	62.7	47.2	58.3		52		45.5		42.7					
13	74.6	61.7	59.1	45.6	54.7		48.8		42.7		40.1		37.6			
14	70.3	59.4	55.8	44.1	51.5	41.4	45.9		40.3		37.8		35.4		32.7	
15	66.5	57.3	53	42.8	48.6	39.9	43.4		38.1		35.7		33.4		30.9	
16	63.1	55.3	50.3	41.5	46	38.5	41.1	33.9	36.1		33.9		31.6		29.3	
17	60	53.6	48	40.3	43.7	37.2	39	32.7	34.3		32.2		30		27.8	
18	57.2	51.9	45.8	39.2	41.6	36	37.1	31.6	32.7	27.7	30.6		28.5		26.4	
19	54.6	50.4	43.8	38.2	39.6	34.9	35.4	30.6	31.2	26.9	29.2		27.2		25.2	
20	51.3	49	42	36.4	37.9	33.8	33.7	29.7	29.8	26	27.9	24	25.9		24	
22	45.6	46.1	38.8	34.8	34.7	31.9	31	28	27.4	24.5	25.5	22.6	23.7	20.6	22	
24	40.9	41.3	36	33.4	32.1	30.2	28.5	26.5	25.3	23.2	23.5	21.3	21.8	19.4	20.2	17.9
26	36.4	36.7	33.6	32.2	29.8	28.7	26.5	25.1	23.4	22	21.8	20.2	20.1	18.4	18.6	16.9
28	32.6	32.8	31.5	30	27.7	27.4	24.6	23.9	21.8	20.9	20.3	19.1	18.7	17.4	17.3	16
30	29.3	29.3	29.7		25.9	26.2	23	22.8	20.4	19.9	18.9	18.2	17.4	16.5	16.1	15.1
32			26.9		24.4	25.2	21.6	21.8	19.1	19.1	17.7	17.4	16.2	15.7	15	14.4
34					23	24.3	20.3	21	18	18.3	16.6	16.6	15.2	15	14	13.7
36					21.7	22.7	19.2	20.2	17	17.6	15.7	15.9	14.3	14.3	13.2	13.1
38							18.1	19.3	16	16.9	14.8	15.3	13.4	13.7	12.4	12.5
40									15.2	16.4	14	14.7	12.6	13.1	11.7	11.9
42									14.4	15.8	13.2	14.2	11.9	12.6	11	11.5
44											12.5	13.8	11.3	12.2	10.4	11
46													10.7	11.8	9.8	10.6
48															9.3	10.2
50															8.8	9.9

# HF

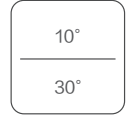
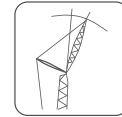
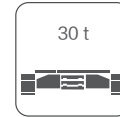
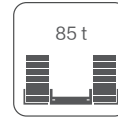
## Main boom: 35m Jib: 9~30 m



	9		12		15		18		21		24		27		30	
	10°	30°	10°	30°	10°	30°	10°	30°	10°	30°	10°	30°	10°	30°	10°	30°
10	185.8		66													
11	80.9		62.5		58.8											
12	76.5	56.9	59.3		55.5		49									
13	72.6	55.1	56.4		52.5		46.3		39.9							
14	69	53.4	53.8	41.4	49.9		44		37.9		35.4		32.9			
15	65.8	51.8	51.4	40.3	47.4	35.4	41.8		36.1		33.7		31.3		28.6	
16	62.8	50.3	49.2	39.2	45.2	34.4	39.9		34.5		32.1		29.8		27.2	
17	60.1	48.9	47.1	38.1	43.2	33.4	38.1		33		30.7		28.4		26	
18	57.3	47.6	45.3	37.2	41.3	32.5	36.4	28.2	31.6		29.4		27.2		24.8	
19	53.7	46.4	43.6	36.3	39.6	31.6	34.9	27.4	30.3	23.7	28.1		26		23.8	
20	50.4	45.2	42	35.4	38	30.8	33.5	26.7	29.1	23	27		24.9		22.8	
22	44.8	43.1	39.1	33.8	35.2	29.3	31	25.4	26.9	21.9	24.9	20	23		21	
24	40.1	40.7	36.6	32.3	32.7	27.9	28.8	24.2	25	20.8	23.2	19	21.3	17.1	19.4	
26	35.8	36.4	34.3	31	30.6	26.7	26.9	23.1	23.4	19.9	21.6	18.1	19.8	16.3	18.1	14.8
28	32	32.5	32.3	29.8	28.7	25.5	25.2	22.1	21.9	19	20.2	17.3	18.5	15.5	16.9	14.1
30	28.8	29.2	29.1	28.8	27	24.5	23.7	21.2	20.6	18.2	18.9	16.5	17.3	14.8	15.8	13.4
32	26	26.3	26.3	26.8	25.4	23.6	22.3	20.3	19.4	17.5	17.8	15.8	16.2	14.2	14.8	12.8
34	23.6	23.8	23.8	24.3	23.9	22.7	21.1	19.6	18.3	16.8	16.8	15.2	15.2	13.6	13.9	12.3
36	21.4	21.6	21.7	22	21.8	21.9	20	18.9	17.3	16.2	15.9	14.6	14.4	13	13.1	11.7
38	19.5	19.6	19.7	20	19.9	20.4	18.9	18.2	16.4	15.6	15.1	14.1	13.6	12.5	12.3	11.2
40	17.8	17.8	18	18.2	18.2	18.6	18	17.6	15.6	15.1	14.3	13.6	12.8	12	11.7	10.8
42			16.4	16.5	16.6	17	16.7	17.1	14.9	14.6	13.6	13.1	12.2	11.6	11	10.4
44			15		15.2	15.5	15.4	15.8	14.2	14.2	12.9	12.7	11.5	11.1	10.5	10
46					14		14.1	14.4	13.6	13.8	12.3	12.3	11	10.8	9.9	9.6
48							12.9	13.1	13	13.4	11.8	11.9	10.4	10.4	9.4	9.3
50									12	12.3	11.2	11.6	9.9	10.1	9	9
52									11		10.7	11.3	9.5	9.8	8.5	8.7
54											10.3	10.6	9	9.5	8.1	8.4
56													8.6	9.2	7.7	8.1
58															7.4	7.9
60															7.1	7.7

HF

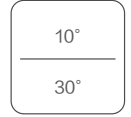
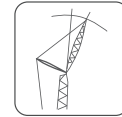
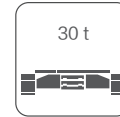
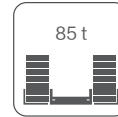
Main boom: 47m Jib: 9~30 m



	9		12		15		18		21		24		27		30	
	10°	30°	10°	30°	10°	30°	10°	30°	10°	30°	10°	30°	10°	30°	10°	30°
11	78.7															
12	75.1		57.7		54.3											
13	71.8		55.3		51.8		45.5									
14	68.8	50.7	53.1		49.5		43.5		37.1							
15	65.9	49.4	51	38.2	47.4		41.6		35.5		33					
16	63.3	48.1	49.1	37.3	45.5		39.9		34.1		31.6		29.2			
17	60.5	47	47.4	36.4	43.6	31.8	38.3		32.8		30.4		28		25.4	
18	56.4	45.9	45.7	35.6	42	31.1	36.8		31.5		29.2		26.9		24.4	
19	52.7	44.8	44.1	34.8	40.4	30.3	35.4	26.1	30.4		28.1		25.9		23.4	
20	49.4	43.8	42.7	34.1	38.9	29.6	34.1	25.5	29.3		27.1		24.9		22.6	
22	43.8	41.9	40	32.7	36.3	28.3	31.8	24.4	27.3	20.9	25.2	18.9	23.1		21	
24	39.1	39.9	37.6	31.4	33.9	27.1	29.7	23.4	25.5	20	23.6	18.1	21.6	16.2	19.5	
26	35	35.8	35.3	30.2	31.9	26	27.9	22.4	24	19.2	22.1	17.3	20.2	15.5	18.3	14
28	31.2	31.9	31.5	29.2	30	25	26.2	21.5	22.6	18.4	20.8	16.6	18.9	14.9	17.1	13.4
30	28	28.6	28.2	28.2	28.3	24.1	24.8	20.7	21.3	17.7	19.6	16	17.8	14.2	16.1	12.8
32	25.2	25.7	25.4	26.2	25.4	23.3	23.4	20	20.2	17.1	18.5	15.4	16.8	13.7	15.2	12.3
34	22.8	23.2	23	23.7	23	22.5	22.2	19.3	19.1	16.5	17.5	14.8	15.8	13.1	14.3	11.8
36	20.6	21	20.8	21.4	20.9	21.7	20.9	18.6	18.2	15.9	16.6	14.3	15	12.6	13.5	11.3
38	18.7	19.1	18.9	19.4	19	19.7	19	18	17.3	15.4	15.8	13.8	14.2	12.2	12.8	10.9
40	17.1	17.3	17.2	17.6	17.3	18	17.3	17.5	16.5	14.9	15	13.3	13.5	11.7	12.2	10.5
42	15.5	15.8	15.7	16	15.7	16.4	15.8	16.6	15.8	14.4	14.3	12.9	12.8	11.3	11.5	10.1
44	14.2	14.3	14.3	14.6	14.4	14.9	14.4	15.1	14.5	14	13.7	12.5	12.2	10.9	11	9.7
46	12.9	13	13	13.3	13.1	13.6	13.1	13.8	13.3	13.6	13.1	12.1	11.6	10.6	10.5	9.4
48	11.8	11.8	11.9	12	12	12.3	12	12.6	12.1	12.9	12.3	11.7	11.1	10.2	10	9.1
50	10.7	10.7	10.8	10.9	10.9	11.2	10.9	11.4	11.1	11.7	11.2	11.4	10.6	9.9	9.5	8.8
52			9.8	9.9	9.9	10.2	10	10.4	10.1	10.6	10.2	11	10.1	9.6	9.1	8.5
54			8.9		9	9.2	9.1	9.4	9.2	9.7	9.3	10	9.3	9.3	8.7	8.2
56					8.2		8.2	8.5	8.3	8.7	8.5	9.1	8.5	9.1	8.3	8
58							7.4	7.6	7.5	7.9	7.7	8.2	7.7	8.3	7.7	7.7
60									6.8	7.1	7	7.4	7	7.5	6.9	7.5
62									6.1		6.3	6.6	6.3	6.8	6.2	6.9
64											5.6	5.9	5.6	6	5.6	6.2
66													5	5.3	5	5.5
68													4.4		4.4	4.8
70															3.9	4.27

# HF

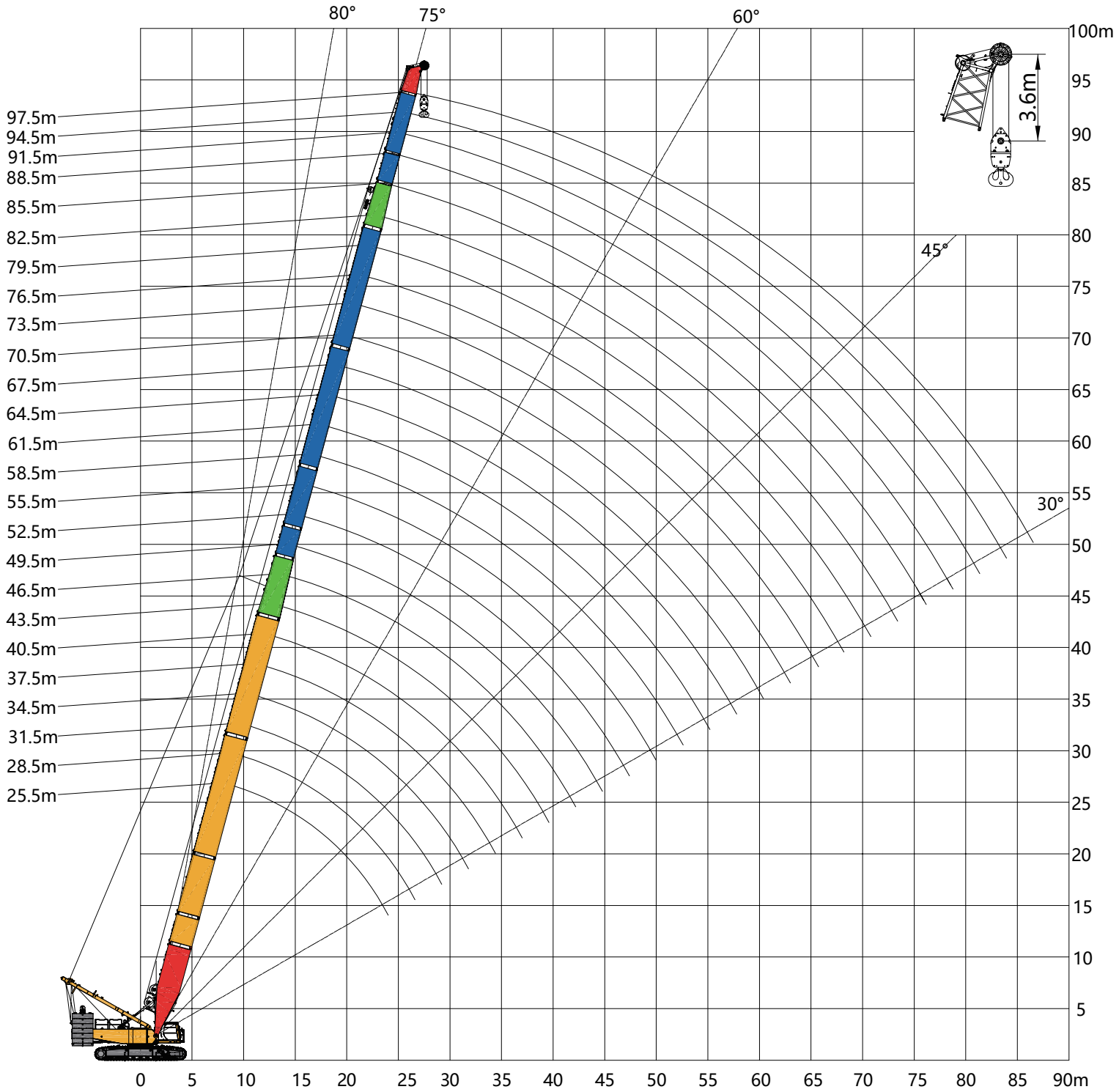
## Main boom: 59m Jib: 9~21m



	9		12		15		18		21	
	10°	30°	10°	30°	10°	30°	10°	30°	10°	30°
12	65									
13	63.8		52.4		49.1					
14	62.6		50.6		47.2					
15	61.5	46.3	48.9		45.5		39.8		33.8	
16	60.5	45.3	47.3	35.1	43.9		38.4		32.7	
17	59.1	44.4	45.9	34.4	42.4		37.1		31.6	
18	55.6	43.5	44.4	33.7	41	29.4	35.8		30.5	
19	52	42.6	43.1	33	39.6	28.8	34.6		29.5	
20	48.7	41.7	41.9	32.4	38.4	28.2	33.5	24.2	28.6	
22	43	40.1	39.6	31.2	36	27.1	31.5	23.3	26.9	19.8
24	38.3	38.7	37.5	30.1	34	26	29.6	22.4	25.3	19
26	34.3	35.2	34.5	29.1	32.1	25.1	28	21.5	23.9	18.3
28	30.6	31.5	30.8	28.2	30.4	24.2	26.5	20.8	22.6	17.7
30	27.3	28.1	27.6	27.3	27.5	23.4	25.1	20	21.5	17
32	24.5	25.2	24.7	25.7	24.7	22.6	23.9	19.4	20.4	16.5
34	22.1	22.7	22.3	23.2	22.3	21.9	22.3	18.7	19.4	15.9
36	20	20.5	20.1	20.9	20.1	21.2	20.2	18.1	18.5	15.4
38	18.1	18.6	18.2	18.9	18.2	19.2	18.2	17.6	17.7	14.9
40	16.4	16.8	16.5	17.1	16.5	17.4	16.5	17.1	16.7	14.5
42	14.9	15.3	15	15.5	15	15.8	15	16	15.1	14.1
44	13.5	13.8	13.6	14.1	13.6	14.3	13.6	14.6	13.7	13.7
46	12.3	12.6	12.3	12.8	12.4	13	12.4	13.2	12.5	13.3
48	11.2	11.4	11.2	11.6	11.2	11.8	11.2	12	11.3	12.3
50	10.1	10.3	10.2	10.5	10.2	10.7	10.2	10.9	10.3	11.1
52	9.2	9.3	9.2	9.5	9.2	9.7	9.2	9.8	9.3	10.1
54	8.3	8.4	8.3	8.5	8.3	8.7	8.3	8.9	8.4	9.1
56	7.4	7.5	7.5	7.6	7.5	7.9	7.5	8	7.6	8.2
58	6.7	6.7	6.7	6.8	6.7	7	6.7	7.2	6.8	7.4
60					6	6.3	6	6.4	6.1	6.6
62					5.3	5.5	5.3	5.7	5.4	5.8
64					4.7	4.9	4.7	5	4.7	5.1
66					4.1		4.1	4.3	4.1	4.5
68							3.5	3.7	3.6	3.8
70							3		3	3.2
72									2.5	

# LB

Light-duty main boom operation mode



LB


Main boom combinations

Boom length \ Boom combination code	①	②	③	④	⑤	⑦	⑧	⑨	⑩	⑪	⑫	⑭
25.5m	1	1			1				1			1
28.5m	1		1		1				1			1
31.5m	1	1	1		1				1			1
34.5m	1			1	1				1			1
37.5m	1	1		1	1				1			1
40.5m	1		1	1	1				1			1
43.5m	1	1	1	1	1				1			1
46.5m	1			2	1				1			1
49.5m	1	1		2	1				1			1
52.5m	1		1	2	1				1			1
55.5m	1	1	1	2	1				1			1
58.5m	1	1	1	2	1	1			1			1
61.5m	1	1	1	2	1		1		1			1
64.5m	1	1	1	2	1	1	1		1			1
67.5m	1	1	1	2	1			1	1			1
70.5m	1	1	1	2	1	1		1	1			1
73.5m	1	1	1	2	1		1	1	1			1
76.5m	1	1	1	2	1	1	1	1	1			1
79.5m*	1	1	1	2	1			2	1			1
82.5m*	1	1	1	2	1	1		2	1			1
85.5m*	1	1	1	2	1		1	2	1			1
88.5m*	1	1	1	2	1	1	1	2	1			1
91.5m*	1	1	1	2	1	1	1	2	1	1		1
94.5m*	1	1	1	2	1	1	1	2	1		1	1
97.5m*	1	1	1	2	1	1	1	2	1	1	1	1

- Notes: 1. Please refer to the appendix on the last page for details of boom combination codes.
- 2. "\*" main boom combination requires the use of center hitch.
- 3. Tower jib rear pendant need to be removed from boom sections. Guide pulley needs to be installed on jib transition section.
- 4. Do not install single top pulley on light boom top section.

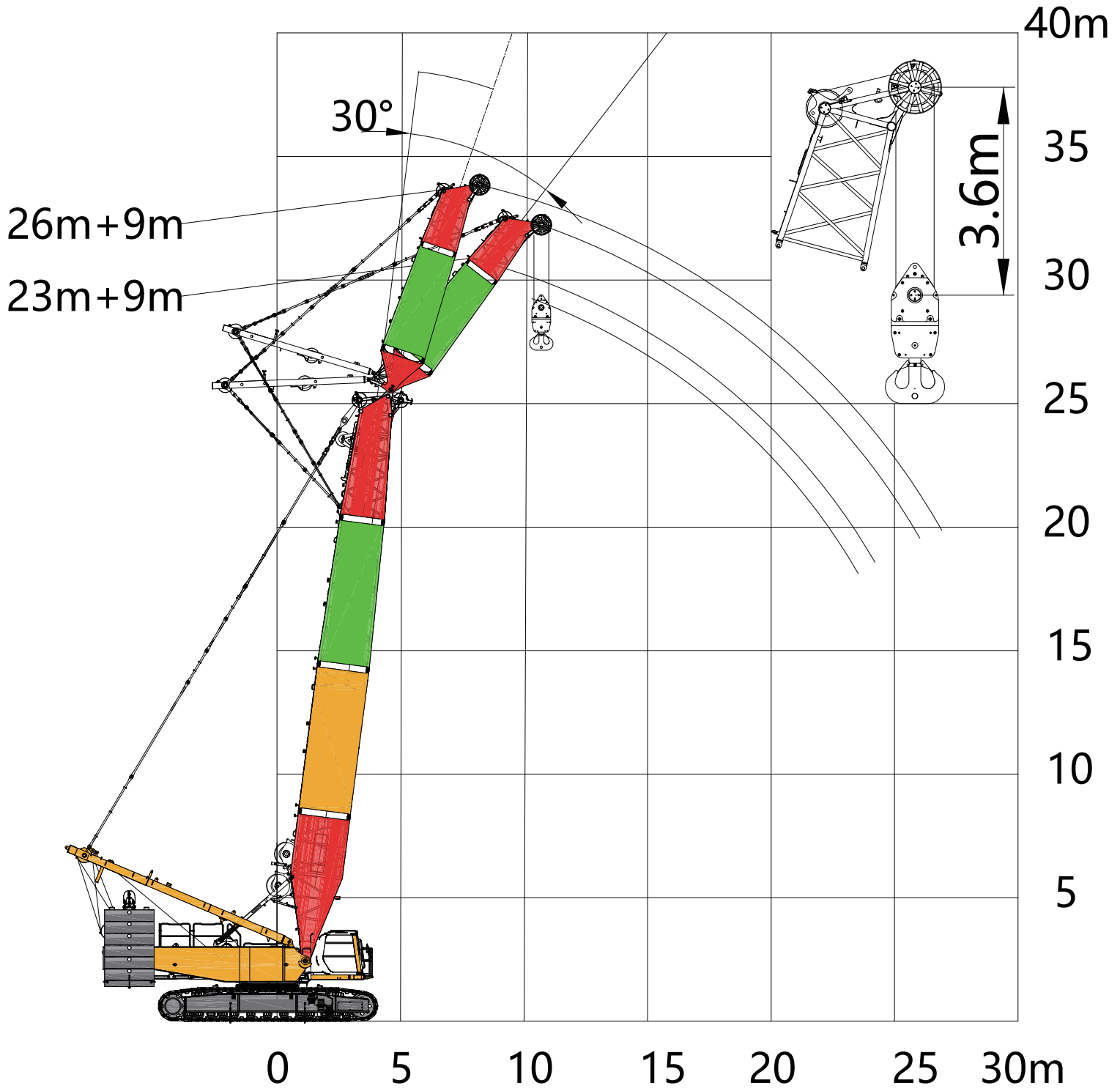


# Main boom: 25.5~97.5 m

 m	25.5	28.5	31.5	34.5	37.5	40.5	43.5	46.5	49.5	52.5	55.5	58.5	61.5	64.5	67.5	70.5	73.5	76.5	79.5	82.5	85.5	88.5	91.5	94.5	97.5
8	100	100	100	100																					
9	100	100	100	100	100	100																			
10	100	100	100	100	100	100	100	100																	
11	100	100	100	100	100	100	100	100	100	100															
12	100	100	100	100	100	100	100	100	99.3	97.2	95.3	93.3													
13	93.2	93.1	92.9	92.9	92.7	92.5	92.3	92.2	91.2	89.5	87.7	86	84.4	82.8											
14	85.6	85.5	85.3	85.3	85.1	84.9	84.7	84.6	84.3	82.7	81.2	79.6	78.3	76.8	75.7	74.3									
15	79.1	79.1	78.8	78.8	78.6	78.4	78.1	78	77.8	76.9	75.5	74.1	72.9	71.6	70.6	69.3	67.1	60.6							
16	73.6	73.6	73.4	73.4	73.1	72.9	72.7	72.5	72.3	71.8	70.5	69.2	68.1	66.9	66	64.8	63.8	59.1	58.1	53.5					
17	68.3	68.4	68.3	68.3	68.2	68.1	67.9	67.8	67.5	67.2	66.1	64.9	63.9	62.8	62	60.9	59.9	57.3	57.3	52.7	48.6	44.8			
18	63.3	63.3	63.2	63.2	63.1	63	62.8	62.7	62.5	62.4	62.1	61	60.1	59.1	58.3	57.3	56.5	55.4	54.7	52	47.9	44.2	40.7	37.6	
19	58.8	58.9	58.8	58.8	58.7	58.5	58.4	58.3	58.1	57.9	57.7	57.5	56.7	55.7	55.1	54.1	53.3	52.4	51.7	50.8	47.3	43.6	40.1	37.1	34.1
20	54.9	55	54.9	54.9	54.7	54.6	54.4	54.3	54.2	54	53.8	53.6	53.5	52.7	52.1	51.2	50.5	49.6	48.9	48.1	46.6	43	39.5	36.6	33.6
22	48.3	48.4	48.3	48.3	48.2	48.1	47.9	47.8	47.6	47.4	47.2	47	46.9	46.6	46.7	46.1	45.5	44.7	44.1	43.3	42.7	41.8	38.4	35.6	32.7
24	43	43.1	43	43.1	42.9	42.8	42.6	42.5	42.3	42.1	41.9	41.6	41.5	41.3	41.3	41.1	41	40.5	40	39.3	38.7	38	37.4	34.6	31.8
26		38.7	38.6	38.7	38.5	38.4	38.2	38.1	37.9	37.7	37.5	37.2	37.2	36.9	37	36.7	36.6	36.2	35.7	35.3	35.1	34.6	34.1	33.6	30.9
28			34.9	35	34.9	34.8	34.5	34.5	34.2	34.1	33.8	33.6	33.5	33.2	33.3	33	32.9	32.6	32.1	31.7	31.4	31.1	30.6	30.7	30
30				31.9	31.8	31.6	31.4	31.4	31.1	30.9	30.7	30.5	30.4	30.1	30.2	29.9	29.8	29.5	29	28.6	28.3	27.9	27.4	27.4	27.1
32					29.1	29	28.8	28.7	28.5	28.3	28	27.8	27.7	27.4	27.5	27.2	27.1	26.8	26.4	25.9	25.6	25.2	24.7	24.7	24.3
34					26.7	26.6	26.4	26.3	26.1	25.9	25.7	25.4	25.3	25.1	25.1	24.9	24.7	24.5	24.1	23.7	23.3	22.9	22.4	22.3	22
36						24.6	24.4	24.3	24.1	23.9	23.6	23.4	23.3	23	23.1	22.8	22.7	22.4	22.1	21.6	21.3	20.9	20.4	20.3	19.9
38							22.5	22.5	22.3	22.1	21.8	21.6	21.5	21.2	21.3	21	20.9	20.6	20.3	19.9	19.5	19.1	18.6	18.5	18.1
40								20.8	20.6	20.4	20.2	20	19.8	19.6	19.6	19.4	19.2	19	18.7	18.3	18	17.5	17	16.9	16.5
42									19.4	19.2	19	18.7	18.5	18.4	18.1	18.2	17.9	17.8	17.5	17.3	16.8	16.5	16.1	15.6	15.1
44										17.8	17.7	17.4	17.2	17.1	16.8	16.9	16.6	16.5	16.2	16	15.6	15.2	14.8	14.3	13.8
46											16.5	16.2	16	15.9	15.6	15.7	15.4	15.3	15	14.8	14.4	14.1	13.7	13.1	12.6
48												15.1	14.9	14.8	14.5	14.6	14.3	14.2	13.9	13.7	13.3	13	12.6	12.1	11.6
50													14.1	13.9	13.8	13.5	13.6	13.3	13.2	12.9	12.8	12.3	12	11.6	11.1
52														13	12.9	12.6	12.7	12.4	12.3	12	11.9	11.4	11.2	10.7	10.2
54															12	11.8	11.8	11.6	11.4	11.2	11	10.6	10.3	9.9	9.4
56																11	11.1	10.8	10.7	10.4	10.2	9.8	9.6	9.2	8.6
58																	10.3	10.1	9.9	9.7	9.5	9.1	8.8	8.5	7.9
60																		9.4	9.3	9	8.8	8.5	8.2	7.8	7.2
64																				7.8	7.6	7.2	7	6.6	6.1
68																					6.5	6.2	5.9	5.5	5
72																						4.9	4.6	4.1	3.7
76																							3.7	3.3	2.9
80																									2.5

# HBF

TBM jib operation mode



# HBF

## Main boom combinations

Boom combination code	①	②	③	④	⑤	⑥
23m	1	1			1	1
26m	1		1		1	1

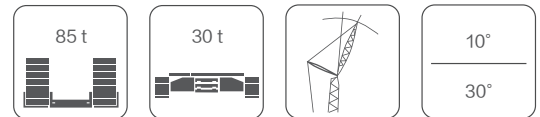
## Jib combination

Boom combination code	⑮	⑦	⑧	⑨	⑩	⑪	⑫	⑭
9m	1				1			1

Notes: 1. Please refer to the appendix on the last page for details of boom combination codes.

# HBF

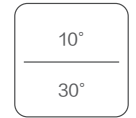
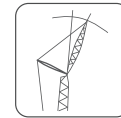
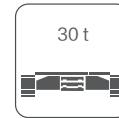
## Main boom: 23m Jib: 9m



10°						30°					
Boom angle	Main hook radius	Main hook load	Aux. hook radius	Aux. hook load	Combined lifting	Boom angle	Main hook radius	Main hook load	Aux. hook radius	Aux. hook load	Combined lifting
81	6.0	224.2	9.5	98.3	166.4	81	6.0	223.6	12.0	65.1	126.2
80	6.4	206.8	10.0	94.3	161.4	80	6.4	206.4	12.5	63.7	124.1
78	7.2	178.9	11.1	87.1	141.4	78	7.2	178.6	13.5	61.1	119.3
76	8.0	157.5	12.2	80.9	125.3	76	8.0	157.3	14.5	58.8	109.2
74	8.7	140.4	13.2	75.5	112.5	74	8.7	140.3	15.5	56.8	99.5
72	9.5	126.6	14.2	70.9	102.1	72	9.5	126.6	16.5	54.9	91.4
70	10.2	115.2	15.3	66.8	93.4	70	10.2	115.2	17.4	53.2	84.5
68	11.0	105.6	16.3	63.2	86.0	68	11.0	105.7	18.4	51.6	78.6
66	11.7	97.5	17.3	60	79.7	66	11.7	97.6	19.3	50.1	73.4
64	12.4	90.5	18.2	57	74.3	64	12.4	90.6	20.2	48.8	69.1
62	13.1	84.4	19.2	53.5	69.7	62	13.1	84.6	21.0	47.6	65.2
60	13.8	79.1	20.1	50.3	65.7	60	13.8	79.3	21.9	46.2	61.3
58	14.5	74.4	21.0	47.5	61.7	58	14.5	74.7	22.7	44.1	57.6
56	15.1	70.3	21.9	45.1	57.9	56	15.1	70.7	23.5	42.1	54.4
54	15.8	66.8	22.8	42.8	54.6	54	15.8	67.1	24.2	40.3	51.6
52	16.4	63.6	23.6	40.8	51.6	52	16.4	63.9	25.0	38.6	49
50	17.0	59.3	24.4	39	49	50	17.0	60.6	25.7	37	46.7
48	17.6	57.1	25.2	37.3	46.6						
46	18.1	54.3	25.9	35.6	44.5						
44	18.7	51.8	26.6	34.1	42.7						
42	19.2	49.6	27.3	32.7	41						
40	19.7	47.51	28.0	31.4	39.4						

# HBF

## Main boom: 26m Jib: 9m

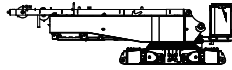


10°						30°					
Boom angle	Main hook radius	Main hook load	Aux. hook radius	Aux. hook load	Combined lifting	Boom angle	Main hook radius	Main hook load	Aux. hook radius	Aux. hook load	Combined lifting
81	6.5	203.9	10.0	98.3	160.9	81	6.5	203.4	12.5	61.2	123
80	7.0	187.6	10.5	94.3	149.4	80	7.0	187.2	13.1	59.9	121.5
78	7.8	161.4	11.7	87.1	130	78	7.8	161.2	14.2	57.4	112.4
76	8.7	141.4	12.9	80.9	114.9	76	8.7	141.3	15.3	55.2	101.1
74	9.6	125.6	14.0	75.5	102.8	74	9.6	125.6	16.4	53.2	91.7
72	10.4	112.9	15.2	70.9	93.0	72	10.4	112.9	17.4	51.4	83.9
70	11.3	102.4	16.3	66.8	84.8	70	11.3	102.5	18.5	49.7	77.3
68	12.1	93.6	17.4	63.2	77.9	68	12.1	93.8	19.5	48.2	71.7
66	12.9	86.2	18.5	60	72.1	66	12.9	86.3	20.5	46.8	67.0
64	13.7	79.8	19.6	57	67.2	64	13.7	80.0	21.5	45.6	62.6
62	14.5	74.2	20.6	53.5	62.7	62	14.5	74.5	22.4	44.4	58.2
60	15.3	69.5	21.6	50.3	58.2	60	15.3	69.8	23.4	42.3	54.4
58	16.1	65.4	22.6	47.5	54.3	58	16.1	65.7	24.3	40.2	51.1
56	16.8	61.6	23.6	45.1	50.9	56	16.8	61.9	25.1	38.3	48.1
54	17.5	57.7	24.5	42.8	47.9	54	17.5	58.0	26.0	36.3	45.5
52	18.2	54.2	25.4	40.8	45.3	52	18.2	54.6	26.8	34.6	43.2
50	18.9	51.2	26.3	39	42.9	50	18.9	51.6	27.6	33	41.1
48	19.6	48.5	27.2	37.3	40.8						
46	20.2	46	28.0	35.6	38.9						
44	20.8	43.8	28.8	34.1	37.2						
42	21.4	41.9	29.6	32.7	35.6						
40	22.0	40.1	30.3	31.4	34.3						

# Dimensions of transported components

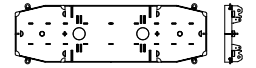
## Basic machine transport plan A

Length	12600 mm
Width	3000 mm
Height	3300 mm
Weight	45700 kg
Qty.	1



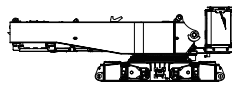
## Turntable counterweight tray

Length	7300 mm
Width	2620 mm
Height	610 mm
Weight	15000 kg
Qty.	1



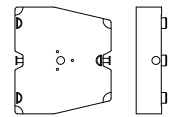
## Basic machine transport plan B

Length	10700 mm
Width	3000 mm
Height	3300 mm
Weight	38900 kg
Qty.	1



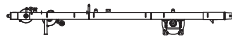
## Turntable counterweight blocks

Length	2100 mm
Width	2380 mm
Height	400 mm
Weight	5000 kg
Qty.	14



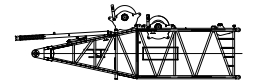
## Mast assy.

Length	9980 mm
Width	1940 mm
Height	1320 mm
Weight	6800 kg
Qty.	1



## Main boom butt

Length	9980 mm
Width	2960 mm
Height	3300 mm
Weight	11800 kg
Qty.	1



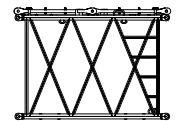
## Left track frame

Length	9330 mm
Width	1450 mm
Height	1380 mm
Weight	22500 kg
Qty.	1



## Main boom 3mA section

Length	3170 mm
Width	2500 mm
Height	2360 mm
Weight	1100 kg
Qty.	1



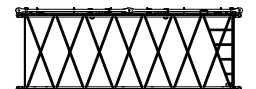
## Right track frame

Length	9330 mm
Width	1450 mm
Height	1380 mm
Weight	22500 kg
Qty.	1



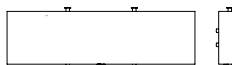
## Main boom 6mA section

Length	6170 mm
Width	2500 mm
Height	2360 mm
Weight	1800 kg
Qty.	1



## Car-body counterweight block

Length	5600 mm
Width	1690 mm
Height	720 mm
Weight	15000 kg
Qty.	2



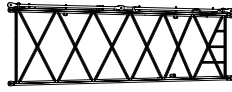
## Main boom 12mA section

Length	12180 mm
Width	2500 mm
Height	2360 mm
Weight	3100 kg
Qty.	2



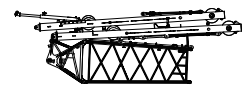
**6m boom transition section**

Length	6170 mm
Width	2500 mm
Height	2360 mm
Weight	1700 kg
Qty.	1



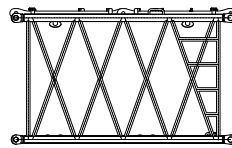
**Tower jib 4-piece set**

Length	9660 mm
Width	2400 mm
Height	3190 mm
Weight	6000 kg
Qty.	1



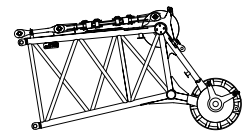
**Main boom 3mB section**

Length	3130 mm
Width	2120 mm
Height	1890 mm
Weight	600 kg
Qty.	1



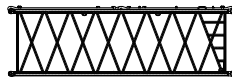
**Tower jib top section**

Length	3750 mm
Width	1990 mm
Height	1990 mm
Weight	1600 kg
Qty.	1



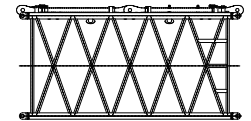
**Main boom 6mB section**

Length	6130 mm
Width	2120 mm
Height	1890 mm
Weight	1300 kg
Qty.	1



**Tower jib 3mC section**

Length	3170 mm
Width	1790 mm
Height	1590 mm
Weight	600 kg
Qty.	1



**Main boom 12mB section**

Length	12130 mm
Width	2120 mm
Height	1890 mm
Weight	2700 kg
Qty.	2



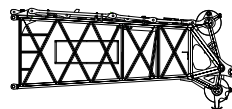
**tower jib 6mC section**

Length	6170 mm
Width	1790 mm
Height	1590 mm
Weight	1100 kg
Qty.	1



**Main boom top section**

Length	5580 mm
Width	2200 mm
Height	2470 mm
Weight	3700 kg
Qty.	1



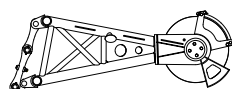
**tower jib 12mC section**

Length	12170 mm
Width	1790 mm
Height	1590 mm
Weight	2000 kg
Qty.	2



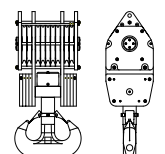
**Boom end single pulley**

Length	2065 mm
Width	1160 mm
Height	700 mm
Weight	260 kg
Qty.	1



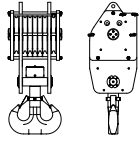
**260t capacity hook block(optional)**

Length	1070 mm
Width	1070 mm
Height	2350 mm
Weight	4145 kg
Qty.	1



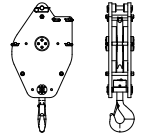
**160t capacity hook block**

Length	866 mm
Width	760 mm
Height	2350 mm
Weight	2200 kg
Qty.	1



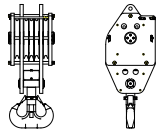
**32t capacity hook block(optional)**

Length	760 mm
Width	350 mm
Height	1628 mm
Weight	730 kg
Qty.	1



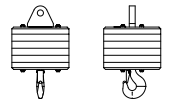
**100t capacity hook block**

Length	704 mm
Width	760 mm
Height	1895 mm
Weight	1690 kg
Qty.	1



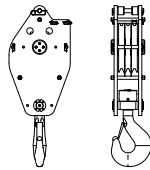
**13.5t capacity hook block**

Length	485 mm
Width	485 mm
Height	787 mm
Weight	500 kg
Qty.	1



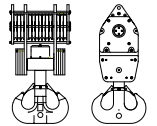
**80t capacity hook block(optional)**

Length	760 mm
Width	418 mm
Height	1998 mm
Weight	960 kg
Qty.	1



**350t capacity hook block(optional)**

Length	1440 mm
Width	870 mm
Height	2820 mm
Weight	6200 kg
Qty.	1



# Symbols

	Rated lifting capacity		Maximum main boom Length
	Max. length of combined boom		Turntable counterweight
	Working radius		Angle between boom and jib
	Undercarriage counterweight		

# Boom code

No.	Name	Length (m)	No.	Name	Length (m)
①	Boom butt	9	⑨	Main boom 12mB section	12
②	Main boom 3mA section	3	⑩	4.5m transition section	4.5
③	Main boom 6mA section	6	⑪	6mC tower jib section	3
④	Main boom 12mA section	12	⑫	6mC tower jib section	6
⑤	6m boom transition section	6	⑬	12mC tower jib section	12
⑥	Boom top section	5	⑭	Jib top	3
⑦	Main boom 3mB section	3	⑮	Jib butt	1.5
⑧	Main boom 6mB section	6			

# Construction cases



# XLC260 CRAWLER CRANE

We reserve the right to make changes to product models, parameters and configurations due to the need for continuous product improvement. For the latest technical information of our products, please consult your sales manager.

The pictures are for reference only, and the specific product is subject to the actual product. The product in the picture may not be standard configuration, and some components may need to be purchased separately.



## XUZHOU CONSTRUCTION MACHINERY GROUP IMP.& EXP. CO., LTD

Address: No.1, Tuolanshan Road, Xuzhou  
Economic Developing Zone, Jiangsu, China 221004  
Tel: +86(0)516 8773 9703  
Fax: +86(0) 516 8773 9230  
E-Mail: europe@xcmg.com



XCMG CRANE



XCMGCRANE.OFFICIAL



This document does not constitute a dry contract. Due to the need for continuous product improvement, we reserve the right to make changes to product models, parameters, and configurations without prior notice. The pictures are for reference only, and the specific product is subject to the actual product. The product in the picture may not be standard configuration, and some components may need to be purchased separately. Applying for a license plate and driving on the road must comply with local regulations.