



CRAWLER CRANE

# XLC150 (2025)



150 t



77m



53+31m

# Company profile

XCMG Hoisting Machinery is one of the core business divisions of Xuzhou Construction Machinery Group Co., Ltd. It is a pioneer, leader and developer of China's hoisting machinery, specializing in R&D and manufacturing of mobile cranes. With technological innovation as its core driving force, XCMG Hoisting Machinery is committed to delivering digital, intelligent and integrated solutions to promote healthy and sustainable development of global hoisting industry.

XCMG Hoisting Machinery has a full range of products, including 5–220t truck cranes, 40–4000t all-terrain cranes, 25–150t rough-terrain cranes, 30–160t telescopic boom crawler cranes and 45–4000t lattice boom crawler cranes. Our products have been exported to over 190 countries and regions, ranking first on global mobile crane manufacturer list for two consecutive years and consistently leading in China's crane export market share.





业智能制造基地

# Research centers

## Global collaborative R&D system

China, Europe, North America, Brazil and Australia

We have set up multiple R&D centers around the world that focus on researching the regulatory requirements and customer needs in different regional markets, and developing special regional models to better meet the usage habits of customers worldwide.



XCMG European R&D Center



XCMG North American R&D Center



XCMG Brazilian R&D Center



XCMG Australian R&D Center



# R&D achievements

Break through nearly 100 core technologies, dedicating in the research and development of crawler equipment for three decades

Obtain market access certifications for various regions, and series products have passed CE certification, Customs Union EAC certification and North America certification

Valid patents 1,770 (including 909 invention patents, among which 89 are overseas authorized patents) and valid software copyrights 165



# Intelligent manufacturing



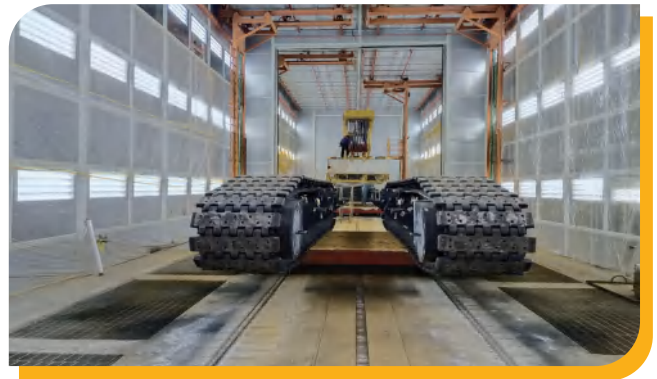
Automatic track roller feeding robot



Lacing tube robot



Track turning machine



Fine coating



Intelligent warehousing and transportation



Test of complete machine

# Global service

## XCMG has

**30**

Subsidiaries

**40**

Sales Offices

**40**

Spare Part Centers

**300+**

Dealers

**2000+**

Service Outlets

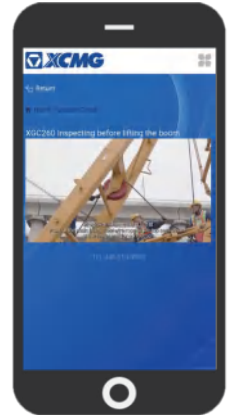
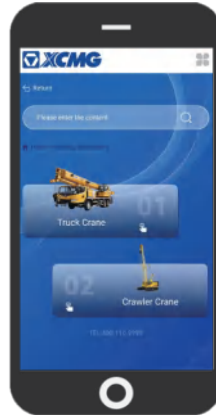
**5000+**

Service Engineers

**1500**

Specialized Service Facilities

## XCMG video



**Regularly enjoy XCMG' s global services**  
**Experience the convenience and comfort of having XCMG in hand**

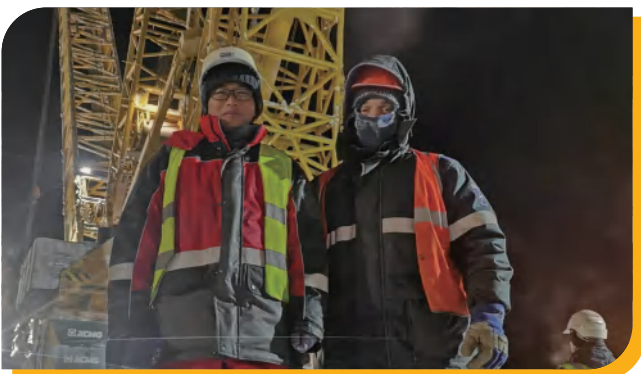
Provide customers with services including on-site equipment inspections, product maintenance and operation training, service APP installation guidance, reducing the operational costs for customers.



▲ Service in Southeast Asian



▲ Service in Indonesia



▲ Service in Central Asian



▲ Service in Africa

# CONTENTS

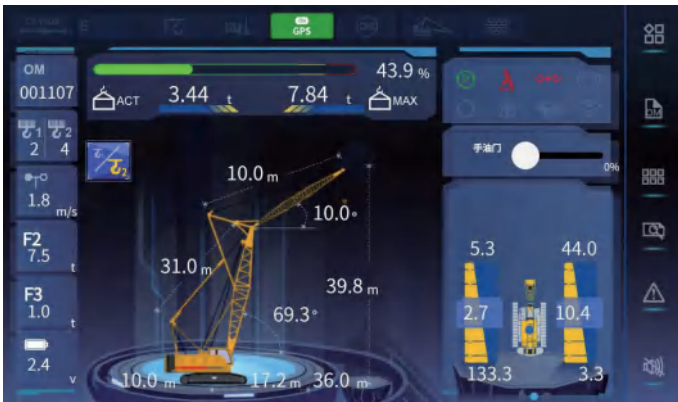
<b>Product highlight</b> .....	<b>07</b>
<b>Assembly/disassembly plan</b> .....	<b>10</b>
<b>Dimension parameters</b> .....	<b>11</b>
<b>Technical specifications</b> .....	<b>13</b>
<b>Main technical parameters</b> .....	<b>15</b>
<b>Operation modes and lifting performances</b> .....	<b>16</b>
<b>Dimension of transported components</b> .....	<b>26</b>
<b>Symbols</b> .....	<b>29</b>
<b>Main boom/jib code</b> .....	<b>29</b>



# 01 Leading technology

## Real-time monitoring and display of ground pressure

- ▶ Display ground pressure dynamically and give early warnings automatically.



## Integrated main valve

- ▶ The structure is more reliable, with better rigidity, less deformation, and higher resistance to high-pressure impact. It is free of valve stem jamming and has fewer oil leakage points.



# 02 Low operating cost

## High-capacity piston pump

- ▶ The power output is more stable, easily handling heavy loads and high-frequency operation demands. It can maintain efficient operation even in complex working conditions, ensuring uninterrupted construction progress.


## Boom transport

- ▶ The boom telescopes in multiple stages for transport. This innovative design requires 20% fewer segments than conventional booms of the same capacity, thereby enhancing transport efficiency.




# 03 High safety and reliability

- ▶ **Fault self-diagnosis system:** real-time positioning of abnormalities, improving troubleshooting efficiency by 50%.
- ▶ **Reliable quality system:** Life-cycle structure safety design technology, first-class manufacturing equipment, 30-year experience in high-strength steel welding.



**Height limiter**  
The limit device is safe and reliable, effectively preventing rope over-winding.




**Anemometer and height mark lamp**  
Trigger sound and light alarm automatically in adverse weather conditions.



**Hook latch**  
Prevent accidental falling of hook during lifting process, avoid safety accidents.



**Rope over-releasing prevention device**  
Detect the remaining length of wire rope to avoid loss of control caused by complete release.



**Emergency stop switch**  
(Mechanical + Program + Limit) switch, enhancing the response speed in emergency.

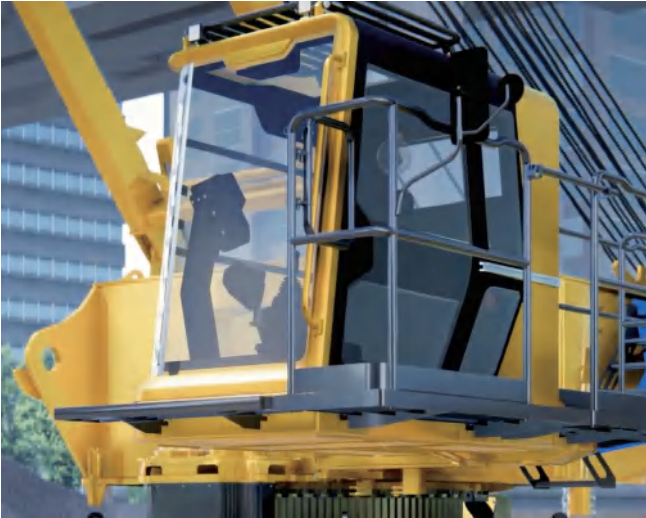


**Real-time monitoring**  
The working states of hoisting, slewing and hooks are all under control.



# 04 Exclusive comfort

- ▶ Glass accounts for over 80% of the cab, providing a 360-degree view; sound is effectively blocked to create a quiet interior environment.



- ▶ The joystick is ergonomically designed, providing a comfortable grip; its functions are sensitive and direct, realizing precise control of movements; the design of buttons and switches is optimized for quick and continuous operational control.



## Human-machine collaboration, saving time and labor

### Large-view cab, excellent operating experience

- ▶ The rear storage compartment is upgraded. The design is like a space capsule, capable of storing work and personal items. It has excellent sealing performance. There is a mobile phone storage box within the right field of vision, allowing for convenient storage at any time.

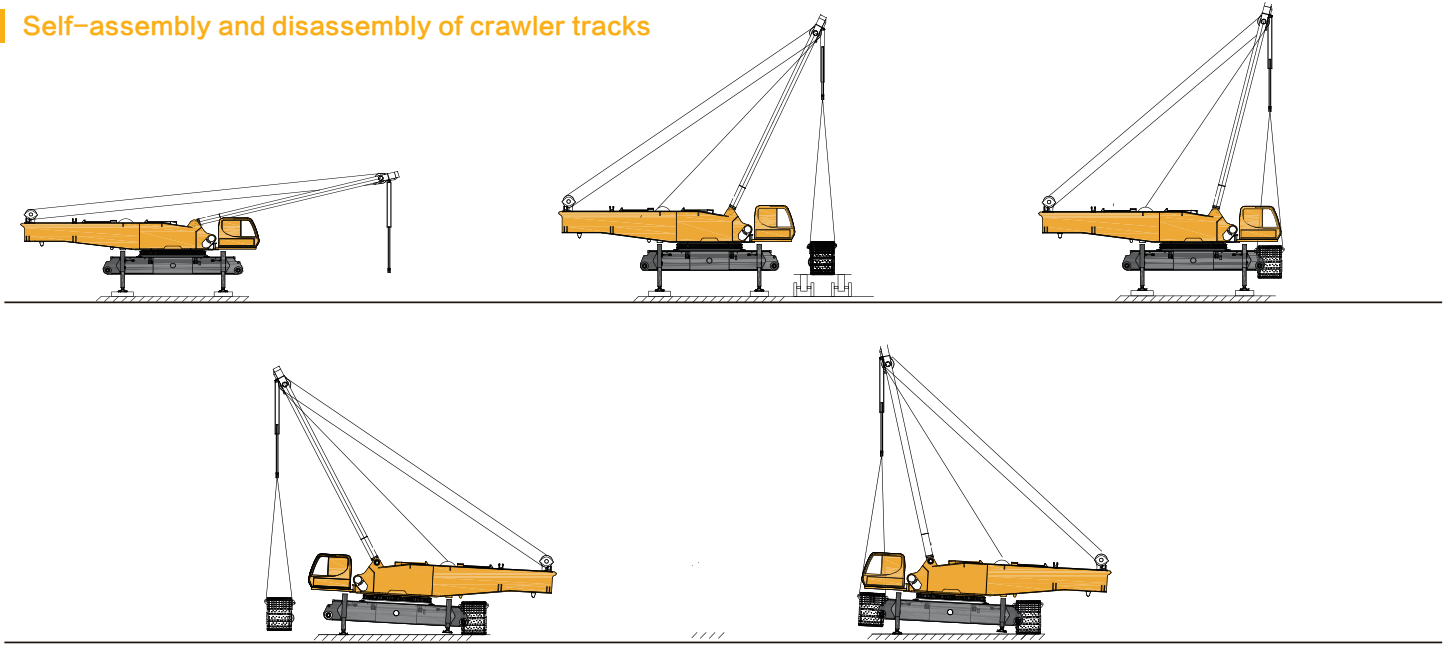


- ▶ Independent air conditioner with multi-duct, the temperature in the cab can be adjusted quickly.
- ▶ Ultra-wide cab is equipped with a suspension seat that can be adjusted in height and angle, reducing the burden on the operator's back. Optional seat heating device is available, and ultra-light textile cotton is highly breathable, adapting to various weather conditions.

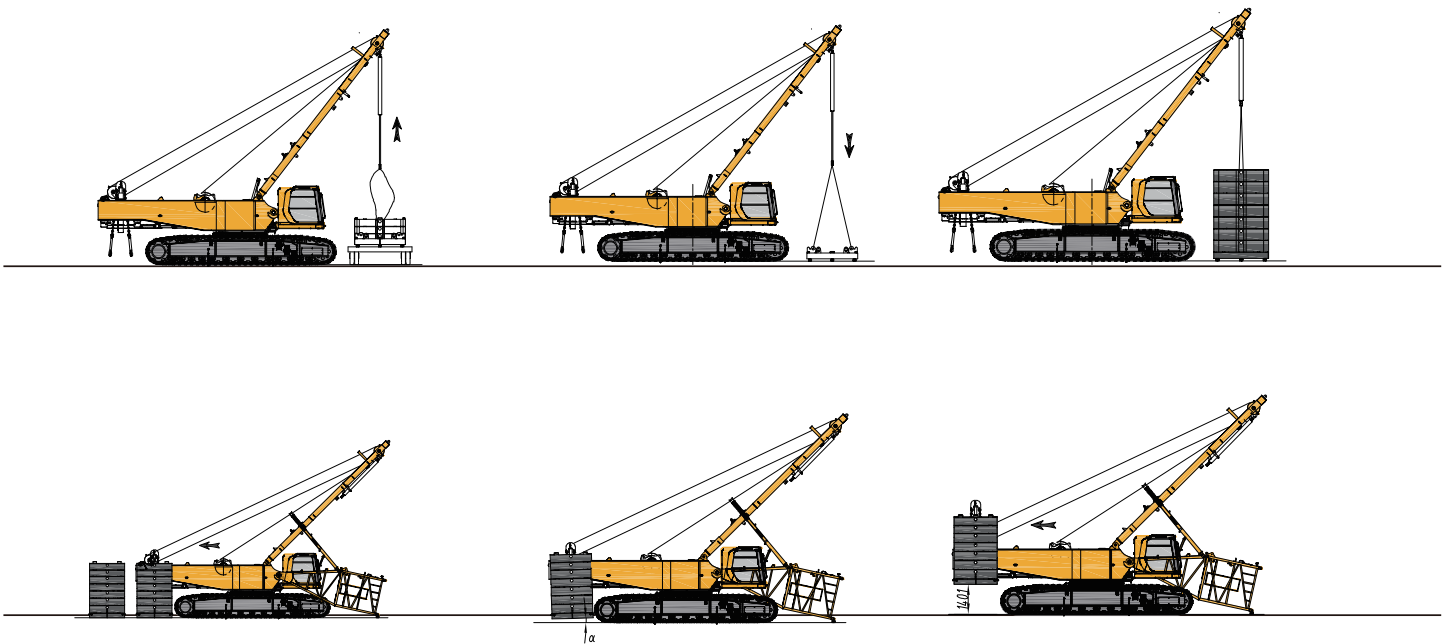


# Assembly and disassembly plan (optional)

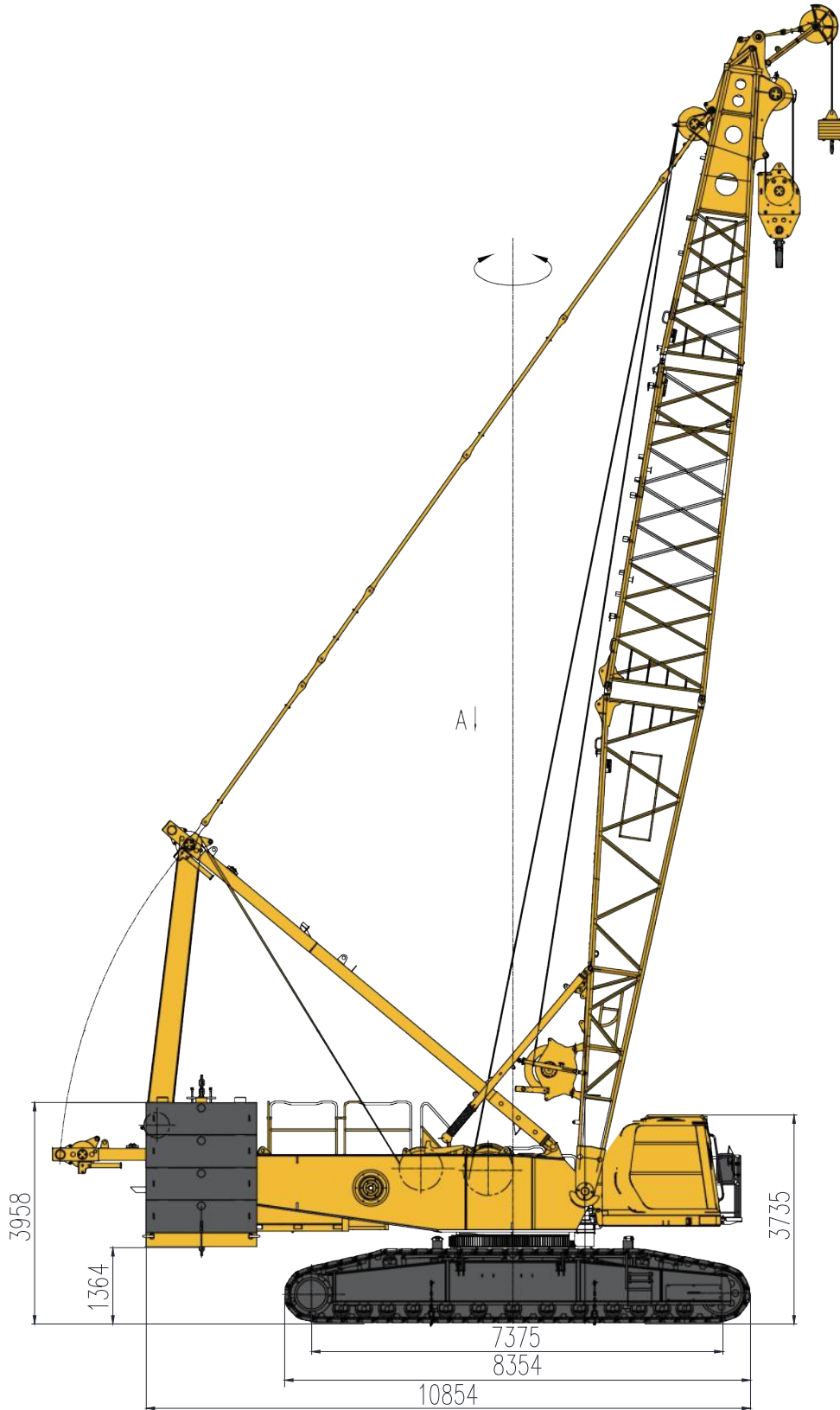
## 1 Self-assembly and disassembly of crawler tracks

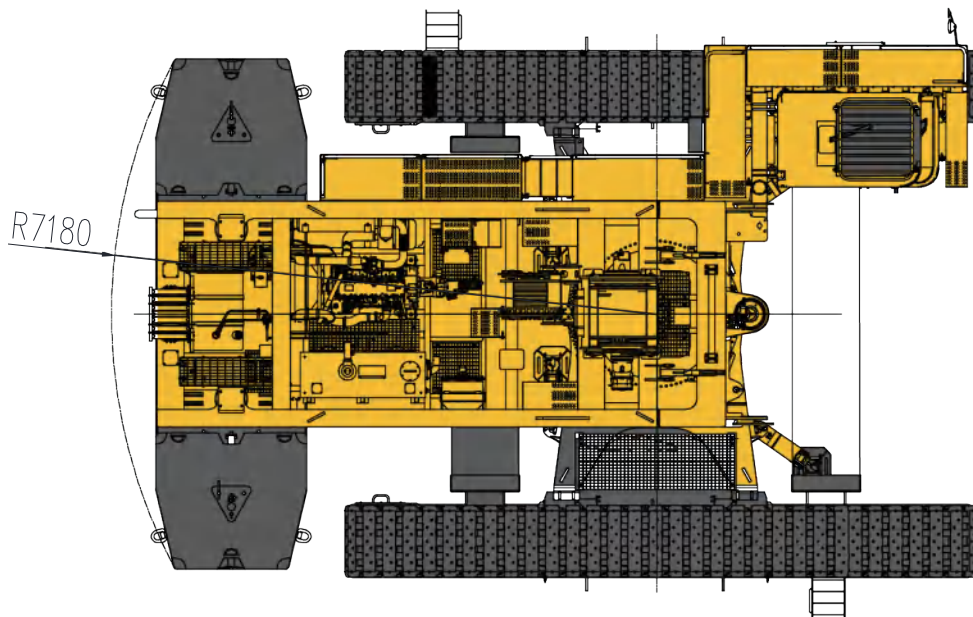
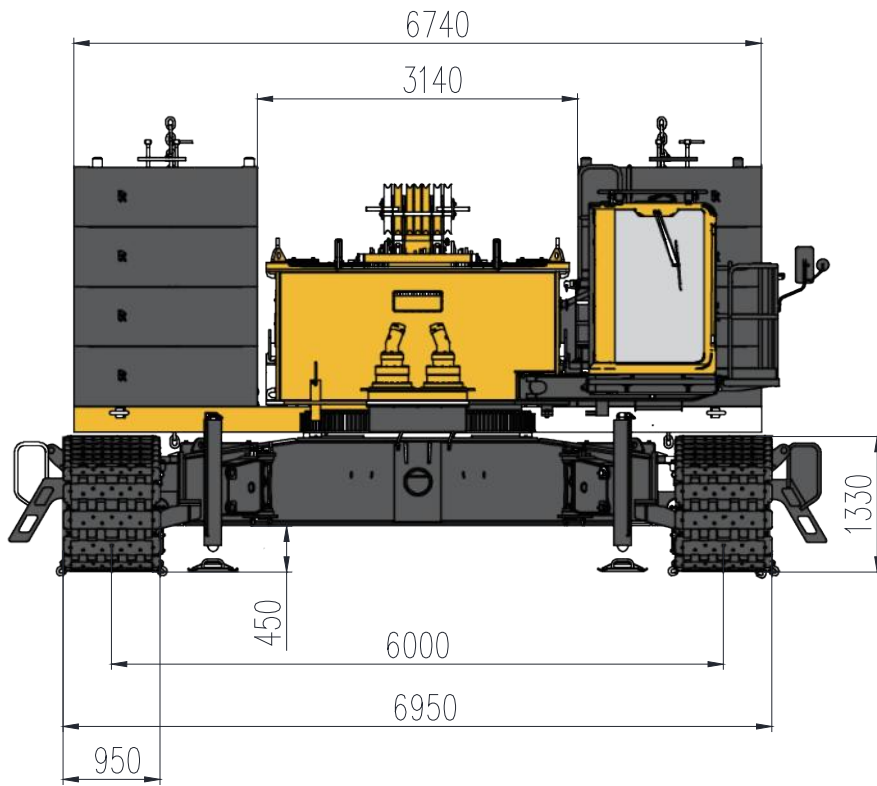


## 2 Self-assembly and disassembly of rear counterweight



# Dimension parameters





# Technical specifications

## Engine

- Model: Cummins
- Emission standard: EU stage
- Rated power: 252kw/1800rpm
- Fuel tank capacity: 600L

## Hydraulic system

- Hydraulic pilot proportional control LUDV load sensing system, with features of accurate speed, sensitive operation and good fine motion performance. Main valve can achieve the compound operation of multiple movements, compact in structure and easy for maintenance.
- Special closed slewing system design, features stable start and stop, good fine motion performance, excellent proportional characteristics and strong resistance to load change interference, meeting the requirements of fine lifting operations.
- It has functions of automatic direction change during travel, self-assembly and disassembly of counterweight, and self-assembly and disassembly of track frames.
- Maximum system pressure: 35MPa
- Hydraulic oil tank capacity: 750L

## Control system

- Control system: PLC programmable controller, it works together with conventional electrical system to achieve logical control and electro-hydraulic proportional control functions, so as to realize automatic control of the crane, this significantly improves the operational safety, reliability, and working efficiency of the crane.
- Display screen: 12.1-inch color LCD screen, engine parameters, lifting weight, boom length and boom angle are shown in real time.
- Operation: electro-hydraulic proportional control, multiple actions can be conducted simultaneously, and all types of loads can be precisely positioned.

## Turntable

- Turntable is box-type structure and is welded with high-strength steel plates. The main side plates on both sides are connected by box-shaped beams, with strong bending and torsion resistance capacity and good stability.

## Operator's cab

- Model: The new generation cab is steel frame structure. All glass is tempered glass, ensuring both safety and visibility.
- Comfort: Instruments and controls are arranged in accordance with ergonomics. The cab is tiltable, equipped with adjustable seat that can recline up to 140° and a high-resolution display that is located within the optimal field of vision. It is also equipped with footrest, cooling and heating air conditioner, sound equipment, fire extinguisher and closed-circuit monitoring system, spacious and comfortable.

## Slewing system

- Slewing drive: driven by hydraulic motor, the slewing system is externally meshed with slewing bearing for rotation.
- Slewing brake: adopt normally closed brake to achieve "spring braking/hydraulic release" function. The slewing system is set with a mechanical slewing locking device to realize locking protection.
- Speed control: Two slewing modes: speed control and free swing.
- Slewing bearings: double-row ball slewing bearing with elliptical raceway, featuring high strength, large bearing capacity, high precision, long service life and convenient maintenance.

## Hoisting system

- Main winch and auxiliary winch (standard configuration): built-in planetary reducer, with normally closed brake to achieve “spring brake/ hydraulic release” function, safe and reliable. The reducer is lubricated by splashing oil, free of maintenance.

Specification	Main winch rope	Auxiliary winch rope
Rope diameter	26 mm	26 mm
Rope length	350 m	250 m
Rated single line pull	14.1 t	14.1 t

## Luffing system

- Main boom luffing system: it is installed on turntable tail by pin shafts. Planetary gear reducer is driven by motor to achieve main boom luffing through drum and luffing pulley block. This system has built-in planetary reducer, with normally closed brake to achieve “spring brake/ hydraulic release” function, safe and reliable. Winch drum has a ratchet locking device, the ratchet paw is driven by hydraulic oil cylinder to realize

Specification	Main boom luffing rope
Rope diameter	22 mm
Rope length	235 m

## Counterweight

- Car-body counterweight: car-body counterweight is 6t, including counterweight slab 2 × 3t.
- Rear counterweight: turntable counterweight has two kinds of combination: 55t and 45t, and independent load charts for different counterweight combinations are provided.
- Turntable counterweight is installed on the rear part of turntable, turntable counterweight composition:
  - ① Turntable counterweight 55t: counterweight tray 1 × 15t, counterweight slab 8 × 5t
  - ② Turntable counterweight 45t: counterweight tray 1 × 15t, counterweight slab 6 × 5t

## Self-assembly system (optional)

- Self-assembly system is optionally configured to realize the safe and rapid assembly and disassembly of tracks, car-body, counterweight and boom butt.

## Hook block

- There are 5 types of hooks available, and the specific parameters are as follows:

Hook lifting capacity	Weight	Number of pulleys
150t hook (optional)	2.2t	7
100t hook (optional)	1.69t	5
80t hook	0.96t	3
32t hook (optional)	0.73t	1
13.5t hook	0.5t	0

## Safety devices

- Safety devices include: LMI, main/auxiliary winch rope over-winding prevention device, main/auxiliary winch rope over-releasing prevention device, main boom luffing ratchet locking device, boom angle limiter, main boom/jib backstop systems, closed-circuit monitoring system, height mark lamp, anemometer, electronic level indicator, lightning protection system, buzzer and warning lamp, functional interlock, emergency stop function, fault self-diagnosis system, black box, power-off protection, etc.

# Main technical parameters

Item		Unit	Parameters
Maximum rated lifting capacity		t	150
Maximum lifting moment		t·m	874.8
Dimension parameters	Main boom length	m	20 ~ 77
	Fixed jib length	m	13 ~ 31
	Maximum main boom and fixed jib combination length	m	53+31
Speed parameters	Hoisting winch maximum single rope speed	m/min	140
	Main boom luffing winch maximum single rope speed	m/min	60
	Maximum slewing speed	rpm	1.0
	Maximum travel speed	km/h	1.3
Mean ground pressure		MPa	0.095
Grade ability		%	30
Maximum weight of single piece in transport state		t	33.5
Maximum dimension of single piece in transport state (L×W×H)		m	11.5×3.0×3.2

Note: 1. Single rope speed is the calculated value of the rope on the drum outermost layer with engine idle running, which changes according to different loads and operating conditions.  
 2. Travel speed, grade ability, mean ground pressure and slewing speed are theoretical calculated values for the crane set on a level, smooth and solid ground.  
 3. We reserve the right to improve and update the technical specifications without

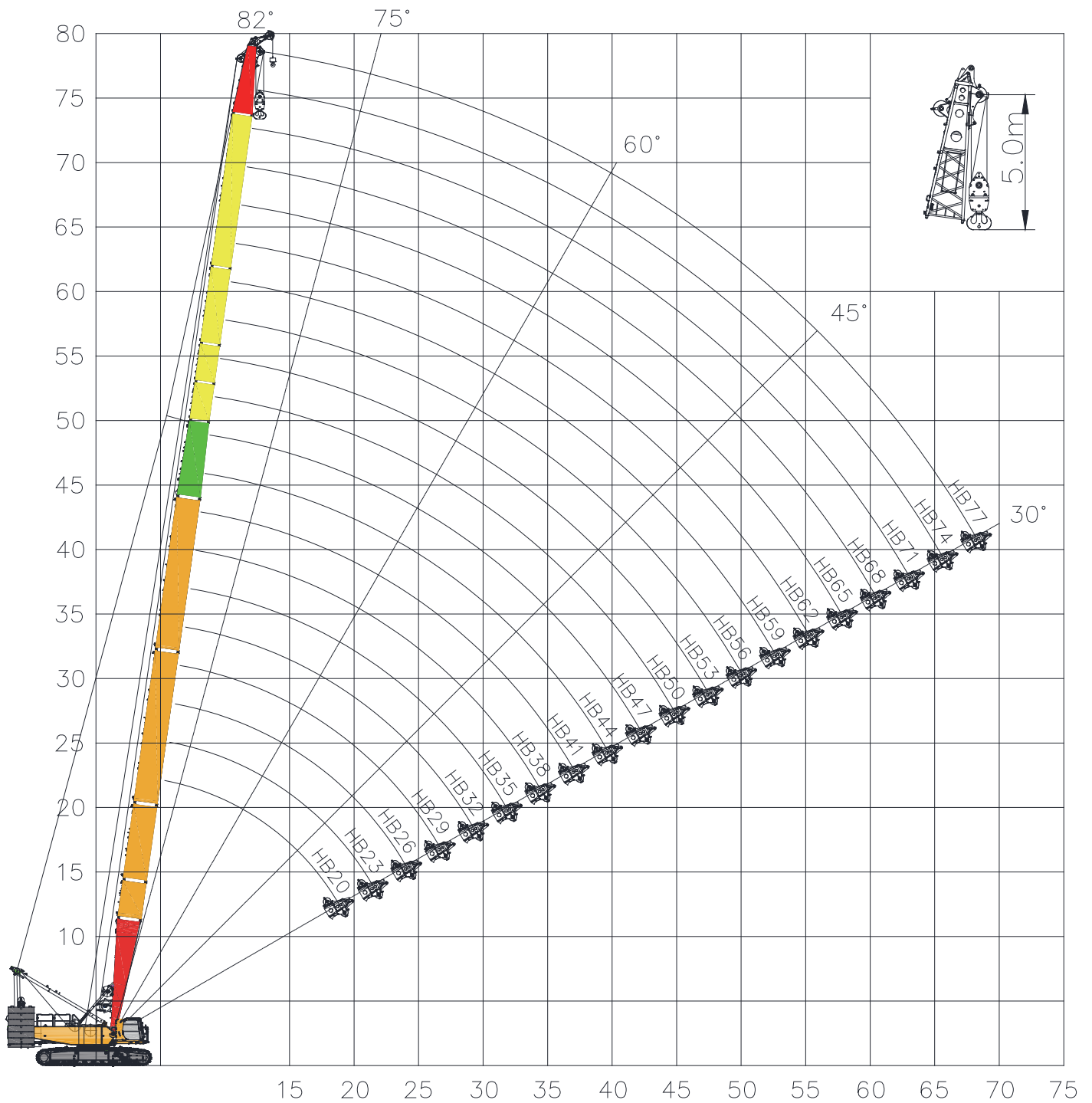
# Operation modes and lifting performances



Operation mode	Combination	Length (m)
HB	Main boom	HB ( 20~77 )
HBS	Main boom + boom end single pulley (two hook operation, main hook lifts load)	HB ( 20~77 ) +S 1.2
	Main boom + boom end single pulley (two hook operation, auxiliary hook lifts load)	
HF1	Main boom + heavy-duty fixed jib	HB ( 20~53 ) +FJ ( 13~31 )
	Main boom + heavy-duty fixed jib (two hook operation, main hook lifts load)	HB ( 26~50 ) +FJ ( 13~31 )
	Main boom + heavy-duty fixed jib (two hook operation, auxiliary hook lifts load)	HB53+FJ ( 13~28 )

# HB

Main boom operation mode



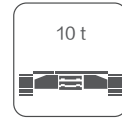
HB


Main boom combination									
Length \ Boom code*	①	②	③	④	⑤	⑥	⑦	⑧	⑨
20	1				1	1			
23	1	1			1	1			
26	1		1		1	1			
29	1	1	1		1	1			
32	1			1	1	1			
35	1	1		1	1	1			
38	1		1	1	1	1			
41	1	1	1	1	1	1			
44	1			2	1	1			
47	1	1		2	1	1			
50	1		1	2	1	1			
53	1	1	1	2	1	1			
56	1	1	1	2	1	1	1		
59	1	1	1	2	1	1		1	
62	1	1	1	2	1	1	1	1	
65	1	1	1	2	1	1			1
*68	1	1	1	2	1	1	1		1
*71	1	1	1	2	1	1		1	1
*74	1	1	1	2	1	1	1	1	1
*77	1	1	1	2	1	1	2	1	1

Note: 1. Center hitch is required for main boom length with “\*” .

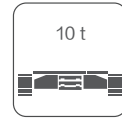
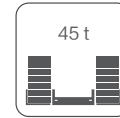
2. Tower jib rear pendants need to be removed from each main boom section, tower/fixed jib guide pulley needs to be removed from main boom transition section.

Main boom: 20~77 m



	23	26	29	32	35	38	41	44	47	50	53	56	59	62	65	68	71	74	77	
7					104.8															
8			102.2	99.1	96.1	92.6	90.6													
9	94.3	91.7	89	86.6	84.2	82	79.8	77.7	75.8	67.4										
10	80.1	80.1	78.8	76.8	74.9	73	71.2	69.5	67.9	67.2	66.7	66.5								
12	61.2	61.2	61.1	61.1	61	59.7	58.4	57.2	55.9	54.7	53.6	52.5	51.5	49.6	43.3	42.9	36.4			
14	49.3	49.2	49.1	49.1	49	48.9	48.8	48.3	47.3	46.4	45.5	44.6	43.8	43	39.9	41.5	34.9	32.2	30	
16	41	41	40.9	40.9	40.7	40.6	40.5	40.4	40.3	40.1	39.3	38.6	38	37.3	36.6	36.1	33.2	30.6	28.9	
18	34.9	34.9	34.8	34.8	34.6	34.5	34.4	34.3	34.1	34	33.9	33.7	33.3	32.7	32.3	31.7	31.2	29.1	27.9	
20	30.2	30.2	30.1	30.1	30	29.9	29.7	29.6	29.5	29.3	29.2	29.1	29	28.9	28.7	28.2	27.7	27.4	26.7	
22		26.6	26.5	26.5	26.3	26.2	26.1	26	25.8	25.7	25.5	25.4	25.3	25.2	25.2	25.1	24.8	24.5	23.9	
24		23.6	23.5	23.5	23.4	23.2	23.1	23	22.8	22.7	22.5	22.4	22.3	22.2	22.2	22.1	22	22	21.6	
26			21	21	20.9	20.8	20.6	20.5	20.4	20.2	20	19.9	19.9	19.7	19.8	19.6	19.5	19.5	19.2	
28				19	18.8	18.7	18.5	18.5	18.3	18.1	18	17.8	17.8	17.6	17.7	17.5	17.4	17.4	17.1	
30					17.1	16.9	16.8	16.7	16.5	16.4	16.2	16.1	16	15.9	15.9	15.7	15.6	15.6	15.3	
32						15.4	15.3	15.2	15	14.9	14.7	14.5	14.5	14.3	14.4	14.2	14.1	14.1	13.8	
34						14.1	13.9	13.9	13.7	13.5	13.3	13.2	13.2	13	13	12.9	12.8	12.7	12.5	
36							12.8	12.7	12.5	12.4	12.2	12.1	12	11.9	11.9	11.7	11.6	11.5	11.3	
38								11.6	11.5	11.3	11.1	11	11	10.8	10.8	10.7	10.6	10.5	10.3	
40									10.5	10.4	10.2	10.1	10	9.9	9.9	9.7	9.6	9.5	9.3	
42									9.7	9.6	9.4	9.3	9.2	9.1	9.1	8.9	8.8	8.7	8.5	
44										8.8	8.6	8.5	8.4	8.3	8.1	8.2	8.1	8	7.7	
46											7.9	7.8	7.8	7.6	7.3	7.5	7.4	7.3	7.1	
48												7.2	7.1	7	6.5	6.8	6.8	6.6	6.4	
50												6.6	6.6	6.4	5.7	6.3	6.2	6.1	5.9	
52													6	5.9	5	5.8	5.7	5.5	5.3	
54														5.4	4.4	5.3	5.2	5	4.9	
56															3.8	4.8	4.7	4.6	4.4	
58																4.4	4.3	4.2	4	
60																4	3.9	3.8	3.6	
62																	3.6	3.4	3.2	
64																		3.1	2.9	
66																			2.6	
68																				2.3

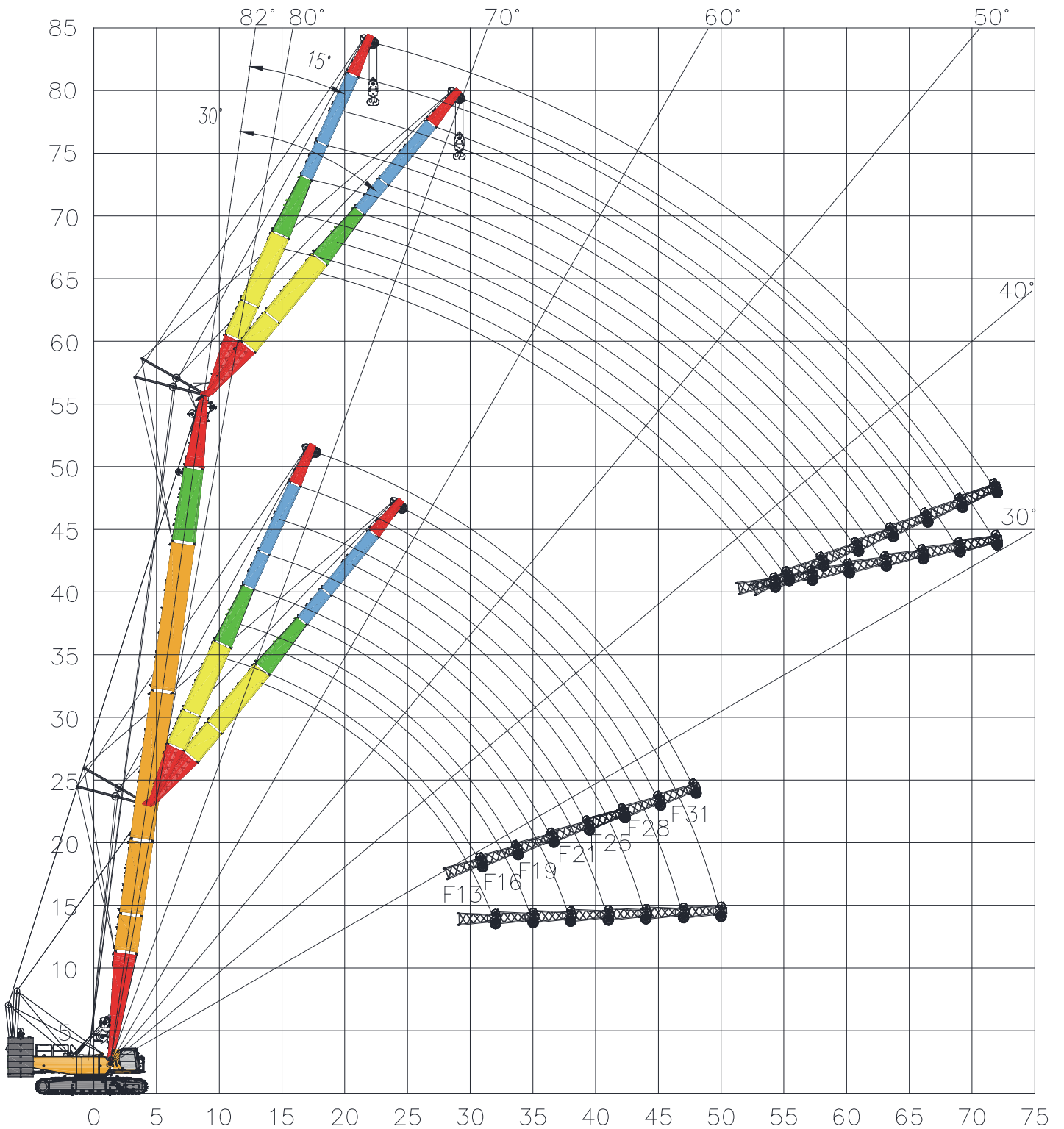
Main boom: 20~77 m



	20	23	26	29	32	35	38	41	44	47	50	53	56	59	62	65	68*	71*	74*	77*	
5	150																				
6	145.8	139	132.9	127.2																	
7	118.4	113.8	109.6	105.6	101.9	98.4															
8	99.5	96.2	93	90	87.3	84.6	82.1	79.7													
9	83.1	83.1	80.7	78.4	76.2	74.1	72.1	70.1	68.3	66.5	64.8										
10	70.5	70.5	70.5	69.3	67.5	65.8	64.1	62.5	61	59.5	58.1	56.7	55.4								
12	53.8	53.8	53.8	53.7	53.7	53.5	52.3	51.1	50	48.9	47.9	46.8	45.8	44.9	44	43.3	42.3	36.4			
14	43.2	43.2	43.2	43.1	43.1	43	42.9	42.7	42.2	41.3	40.5	39.6	38.8	38.1	37.4	36.8	36.1	34.9	32.2	30	
16	35.9	35.9	35.9	35.7	35.7	35.6	35.5	35.4	35.3	35.1	34.9	34.1	33.5	32.9	32.3	31.9	31.2	30.7	30.3	28.9	
18	30.5	30.5	30.5	30.4	30.4	30.2	30.1	30	29.9	29.7	29.6	29.4	29.3	28.8	28.3	27.9	27.4	26.9	26.6	25.9	
20		26.3	26.3	26.2	26.2	26.1	26	25.8	25.7	25.6	25.4	25.3	25.2	25.1	25	24.7	24.2	23.8	23.5	22.9	
22			23.1	23	23	22.8	22.7	22.6	22.5	22.3	22.2	22	21.9	21.8	21.7	21.7	21.6	21.2	21	20.4	
24			20.4	20.3	20.3	20.2	20.1	19.9	19.8	19.7	19.5	19.3	19.2	19.2	19	19.1	18.9	18.8	18.8	18.3	
26				18.1	18.2	18	17.9	17.7	17.7	17.5	17.3	17.2	17	17	16.8	16.9	16.7	16.6	16.6	16.3	
28					16.3	16.2	16.1	15.9	15.8	15.6	15.5	15.3	15.2	15.1	15	15	14.9	14.8	14.7	14.5	
30						14.6	14.5	14.3	14.3	14.1	13.9	13.7	13.6	13.6	13.4	13.5	13.3	13.2	13.1	12.9	
32							13.1	13	12.9	12.7	12.6	12.4	12.3	12.2	12.1	12.1	11.9	11.8	11.8	11.5	
34							11.9	11.8	11.7	11.5	11.4	11.2	11.1	11	10.9	10.9	10.7	10.6	10.6	10.3	
36								10.7	10.7	10.5	10.4	10.2	10	10	9.8	9.9	9.7	9.6	9.5	9.3	
38									9.8	9.6	9.4	9.2	9.1	9.1	8.9	8.9	8.8	8.7	8.6	8.4	
40										8.8	8.6	8.4	8.3	8.2	8.1	8.1	7.9	7.9	7.8	7.5	
42										8	7.9	7.7	7.6	7.5	7.4	7.4	7.2	7.1	7	6.8	
44											7.2	7	6.9	6.8	6.7	6.7	6.5	6.5	6.3	6.1	
46												6.4	6.3	6.2	6.1	6.1	5.9	5.8	5.7	5.5	
48													5.7	5.7	5.5	5.6	5.4	5.3	5.2	5	
50													5.2	5.2	5	5	4.9	4.8	4.7	4.5	
52														4.7	4.6	4.6	4.4	4.3	4.2	4	
54															4.1	4.1	4	3.9	3.8	3.6	
56																3.7	3.6	3.5	3.3	3.2	
58																	3.2	3.1	3	2.8	
60																	2.9	2.8	2.6	2.5	
62																		2.4	2.3	2.1	
64																			2	1.8	

# HF1

Heavy-duty fixed jib operation mode



# HF1

## Main boom combination

Length \ Boom code*	①	②	③	④	⑤	⑥
20	1				1	1
23	1	1			1	1
26	1		1		1	1
29	1	1	1		1	1
32	1			1	1	1
35	1	1		1	1	1
38	1		1	1	1	1
41	1	1	1	1	1	1
44	1			2	1	1
47	1	1		2	1	1
50	1		1	2	1	1
53	1	1	1	2	1	1

## Heavy-duty fixed jib combination

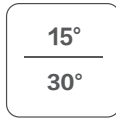
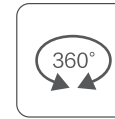
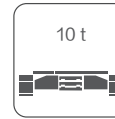
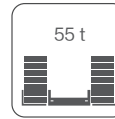
Length \ Boom code*	⑦	⑧	(10)	(11)	(12)	(13)	(14)
13			1	1			1
16	1		1	1			1
19		1	1	1			1
22	1	1	1	1			1
25	1	1	1	1	1		1
28	1	1	1	1		1	1
31	1	1	1	1	1	1	1

Note: 1. Tower jib rear pendants need to be removed from each main boom section, tower jib guide pulley needs to be installed on main boom top section.

2. It is recommended using wedge to assist boom raising when main boom and jib combination length exceed 71m.

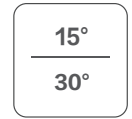
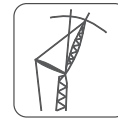
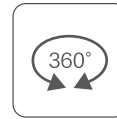
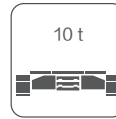
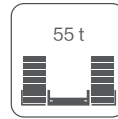
3. When using F13 operation mode, fixed jib must hook with weight not less than 2.2t.


Main boom: 20 m Jib: 13~31 m



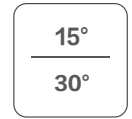
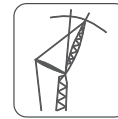
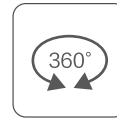
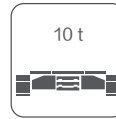
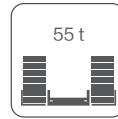
	13		19		25		31	
	15°	30°	15°	30°	15°	30°	15°	30°
12	50							
14	49	34.8	25.6					
16	41.8	32.1	23.7		18.8			
18	35.6	29.9	22.2	19.1	17.4		13.8	
20	30.8	28	20.8	18.1	16.2		12.7	
22	27	26.4	19.6	17.2	15.2	13	11.8	
24	23.9	24.2	18.5	16.4	14.2	12.3	10.9	
26	21.3	21.6	17.5	15.7	13.3	11.7	10.1	8.6
28	19.2	19.3	16.6	15	12.6	11.1	9.5	8.1
30	17.3	17.4	15.8	14.5	11.8	10.6	8.8	7.6
32	15.7	15.7	15.1	14	11.2	10.2	8.3	7.2
34			14.4	13.6	10.6	9.8	7.8	6.9
36			13.6	13.4	10.1	9.4	7.3	6.5
38			12.5	12.5	9.7	9.1	6.9	6.2
40					9.3	8.9	6.5	5.9
42					8.9	8.7	6.2	5.7
44						8.6	5.9	5.5
46							5.6	5.3
48							5.4	5.2
50								5.2


Main boom: 35 m Jib: 13~31 m



	13		19		25		31	
	15°	30°	15°	30°	15°	30°	15°	30°
14	41.4							
16	38.8	32.5	25.4					
18	34.9	31	24.2		18.6			
20	30.1	29.7	23	19.1	17.7		13.6	
22	26.2	26.8	22	18.4	16.8		12.8	
24	23.1	23.6	21	17.8	15.9	13	12	
26	20.6	21	20.1	17.2	15.2	12.5	11.4	
28	18.4	18.8	18.9	16.6	14.5	12.1	10.8	8.6
30	16.6	16.9	17.1	16.1	13.8	11.6	10.2	8.2
32	15	15.2	15.5	15.6	13.2	11.2	9.7	7.9
34	13.6	13.8	14.1	14.5	12.6	10.9	9.2	7.6
36	12.3	12.5	12.8	13.2	12.1	10.5	8.7	7.3
38	11.3	11.4	11.7	12.1	11.6	10.2	8.3	7
40	10.3	10.4	10.7	11	10.9	9.9	8	6.8
42	9.4	9.5	9.9	10.1	10	9.7	7.6	6.5
44	8.6	8.6	9	9.3	9.2	9.5	7.3	6.3
46			8.3	8.5	8.5	8.8	7	6.1
48			7.6	7.7	7.8	8.1	6.7	5.9
50			7	7.1	7.2	7.4	6.4	5.7
52					6.6	6.8	6.2	5.6
54					6.1	6.2	5.9	5.5
56					5.6	5.7	5.7	5.3
58							5.2	5.3
60							4.8	4.9
62							4.3	4.4

Main boom: 53 m Jib: 13~31 m



	13		19		25		31	
	15°	30°	15°	30°	15°	30°	15°	30°
16	27.9							
18	27.9	27.6	24.7					
20	27.9	26.6	23.9		18.2			
22	25.3	25.7	23.1	18.9	17.5			
24	22.2	23	22.3	18.4	16.8		12.7	
26	19.6	20.3	20.2	18	16.2	13	12.1	
28	17.4	18	18	17.5	15.7	12.6	11.6	
30	15.6	16.1	16.1	16.9	15.1	12.3	11.1	8.6
32	14	14.4	14.5	15.2	14.6	11.9	10.7	8.3
34	12.6	13	13.1	13.7	13.3	11.6	10.2	8
36	11.3	11.7	11.8	12.4	12	11.3	9.8	7.8
38	10.2	10.6	10.7	11.3	10.9	11.1	9.5	7.6
40	9.3	9.6	9.7	10.2	9.9	10.6	9.1	7.3
42	8.4	8.6	8.8	9.3	9	9.7	8.8	7.1
44	7.6	7.8	8	8.4	8.2	8.8	8.3	6.9
46	6.9	7.1	7.3	7.7	7.4	8	7.6	6.8
48	6.2	6.4	6.6	6.9	6.8	7.3	6.9	6.6
50	5.6	5.7	6	6.3	6.1	6.6	6.2	6.4
52	5	5.1	5.4	5.7	5.6	6	5.7	6.2
54	4.5	4.6	4.9	5.1	5	5.4	5.1	5.7
56	4	4.1	4.4	4.6	4.5	4.9	4.6	5.1
58	3.6	3.6	4	4.1	4.1	4.4	4.2	4.6
60	3.1	3.2	3.5	3.7	3.7	3.9	3.7	4.1
62			3.1	3.2	3.3	3.5	3.3	3.7
64			2.8	2.8	2.9	3.1	2.9	3.3
66			2.4	2.4	2.5	2.7	2.6	2.9
68					2.2	2.3	2.2	2.5
70					1.9	2	1.9	2.1
72							1.6	1.8

# Dimensions of transported components

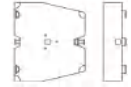
## Basic crane transport plan A

Length	11.5 m
Width	3.0 m
Height	3.2 m
Weight	33.5 t
Qty.	1



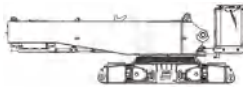
## Turntable counterweight slab

长	1.80 m
宽	2.00 m
高	0.68 m
重量	5.0 t
数量	8



## Basic crane transport plan B

Length	10.0 m
Width	3.0 m
Height	3.2 m
Weight	30 t
Qty.	1



## Main boom butt

Length	9.7 m
Width	3.0 m
Height	2.0 m
Weight	5.5 t
Qty.	1



## Left track frame

Length	8.2 m
Width	1.5 m
Height	1.3 m
Weight	13.8 t
Qty.	1



## Main boom 3mA section

Length	3.17 m
Width	2.2 m
Height	2.0 m
Weight	0.7 t
Qty.	1



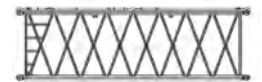
## Right track frame

Length	8.2 m
Width	1.5 m
Height	1.3 m
Weight	13.8 t
Qty.	1



## Main boom 6mA section

Length	6.2 m
Width	2.2 m
Height	2.0 m
Weight	1.2 t
Qty.	1



## Car-body counterweight slab

Length	4.63 m
Width	1.04 m
Height	0.48 m
Weight	5 t
Qty.	2



## Main boom 12mA section

Length	12.2 m
Width	2.2 m
Height	2.0 m
Weight	2.2 t
Qty.	2



## Turntable counterweight tray

Length	6.74 m
Width	2.0 m
Height	0.61 m
Weight	15.0 t
Qty.	1



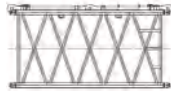
## Main boom 6m transition section

Length	6.2 m
Width	2.3 m
Height	2.0 m
Weight	1.3 t
Qty.	1



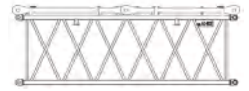
**Main boom 3mB section**

Length	3.2 m
Width	1.8 m
Height	1.6 m
Weight	0.5 t
Qty.	2



**Jib top**

Length	3.2 m
Width	1.2 m
Height	1.1 m
Weight	0.25 t
Qty.	2



**Main boom 6mB section**

Length	6.2 m
Width	1.8 m
Height	1.6 m
Weight	0.8 t
Qty.	2



**Jib 3mC section**

Length	6.2 m
Width	1.2 m
Height	1.1 m
Weight	0.41 t
Qty.	1



**Main boom 12mB section**

Length	12.2 m
Width	1.8 m
Height	1.6 m
Weight	1.3 t
Qty.	1



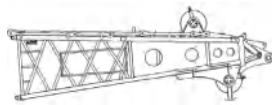
**Jib 6mC section**

Length	5.2 m
Width	1.8 m
Height	1.7 m
Weight	0.53 t
Qty.	1



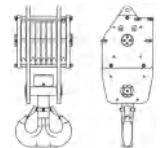
**Main boom top**

Length	6.3 m
Width	2.3 m
Height	2.2 m
Weight	2.7 t
Qty.	1



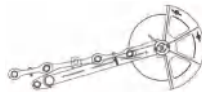
**150t hook**

Length	0.87 m
Width	0.76 m
Height	2.35 m
Weight	2.20 t
Qty.	1



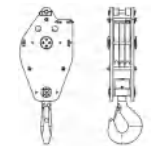
**Boom end single pulley**

Length	1.8 m
Width	1.16 m
Height	0.8 m
Weight	0.2 t
Qty.	1



**80t hook**

Length	0.76 m
Width	0.418 m
Height	1.998 m
Weight	0.96 t
Qty.	1



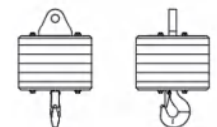
**Jib set (three-in-one)**

Length	7.0 m
Width	2.0 m
Height	2.9 m
Weight	3.0 t
Qty.	1



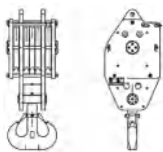
**13.5t hook**

Length	0.485 m
Width	0.485 m
Height	0.787 m
Weight	0.50 t
Qty.	1



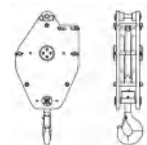
**100t hook**

Length	0.76 m
Width	0.70 m
Height	1.90 m
Weight	1.69 t
Qty.	2





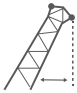
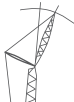



**32t hook**

Length	0.76 m
Width	0.35 m
Height	1.628 m
Weight	0.73 t
Qty.	1



# Symbols

	Rated lifting capacity		Maximum main boom length
	Maximum main boom and jib combination length		Turntable counterweight
	Working radius		Angle between main boom and fixed jib
	Car-body counterweight		

# Main boom/jib code

No.	Name	Length (m)	No.	Name	Length (m)
①	Main boom butt 9m	9	(13)	Jib insert 6mC	6
②	Main boom insert 3mA	3	(14)	Jib top 3m	3
③	Main boom insert 6mA	6			
④	Main boom insert 12mA	12			
⑤	Main boom transition section 6m	6			
⑥	Main boom top 5m	5			
⑦	Main boom insert 3mB	3			
⑧	Main boom insert 6mB	6			
⑨	Main boom insert 12mB	12			
(10)	Jib butt 5m	5			
(11)	Jib transition section 5m	5			
(12)	Jib insert 3mC	3			

# Construction cases



# XLC150 CRAWLER CRANE

Due to the need for continuous product improvement, we reserve the right to make changes to product models, parameters and configurations. For the latest technical information of the product, please consult your sales manager.

The pictures are for reference only, and the specific product is subject to the actual product. The product in the picture may not be standard configuration, and some components may need to be purchased separately.



## XUZHOU CONSTRUCTION MACHINERY GROUP IMP.& EXP. CO., LTD

Address: No.1, Tuolanshan Road, Xuzhou  
Economic Developing Zone, Jiangsu, China 221004  
Tel: +86(0)516 8773 9703  
Fax: +86(0) 516 8773 9230  
E-Mail: europe@xcmg.com



XCMG CRANE



XCMGCRANE.OFFICIAL



This document does not constitute a dry contract. Due to the need for continuous product improvement, we reserve the right to make changes to product models, parameters, and configurations without prior notice. The pictures are for reference only, and the specific product is subject to the actual product. The product in the picture may not be standard configuration, and some components may need to be purchased separately. Applying for a license plate and driving on the road must comply with local regulations.