



CRAWLER CRANE

# XGTC60-AU



60t



46.5m



62m

# Company profile

XCMG Hoisting Machinery is one of the core business divisions of Xuzhou Construction Machinery Group Co., Ltd. It is a pioneer, leader and developer of China's hoisting machinery, specializing in R&D and manufacturing of mobile cranes. With technological innovation as its core driving force, XCMG Hoisting Machinery is committed to delivering digital, intelligent and integrated solutions to promote healthy and sustainable development of global hoisting industry.

XCMG Hoisting Machinery has a full range of products, including 5–220t truck cranes, 40–4000t all-terrain cranes, 25–150t rough-terrain cranes, 30–160t telescopic boom crawler cranes and 45–4000t lattice boom crawler cranes. Our products have been exported to over 190 countries and regions, ranking first on global mobile crane manufacturer list for two consecutive years and consistently leading in China's crane export market share.





业 智 能 制 造 基 地

# Research centers

## Global collaborative R&D system

### China, Europe, North America, Brazil and Australia

We have set up multiple R&D centers around the world that focus on researching the regulatory requirements and customer needs in different regional markets, and developing special regional models to better meet the usage habits of customers worldwide.



XCMG European R&D Center



XCMG North American R&D Center



XCMG Brazilian R&D Center



XCMG Australian R&D Center

# R&D achievements

Break through nearly 100 core technologies, dedicating in the research and development of crawler equipment for three decades

Obtain market access certifications for various regions, and series products have passed CE certification, Customs Union EAC certification and North America certification

Valid patents 1,770 and valid software copyrights 165 (including 909 invention patents, among winch 89 are overseas authorized patents)



# Intelligent manufacturing



Welding robot



Lacing tube robot



Automatic feeding of track rollers



Fine coating



Intelligent warehousing and transportation



Test of complete machine

# Global service

XCMG has globally

30

Subsidiaries

40

Sales Offices

40

Spare Part Centers

300+

Dealers

2000+

Service Outlets

5000+

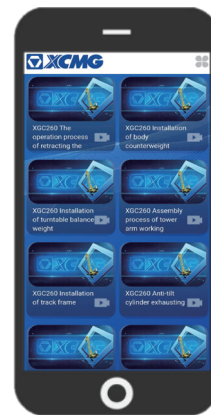
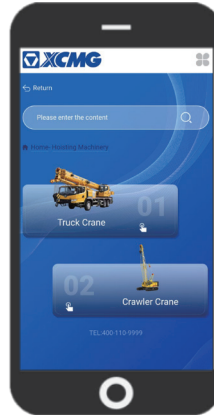
Service Engineers

1500

Specialized Service Facilities

Regularly enjoy XCMG' s global services  
Experience the convenience and comfort of  
having XCMG in hand

XCMG video



Provide customers with services including on-site equipment inspections, product maintenance and operation training, service APP installation guidance, reducing the operational costs for customers.



▲ Service in Southeast Asian



▲ Service in Indonesia



▲ Service in Central Asian



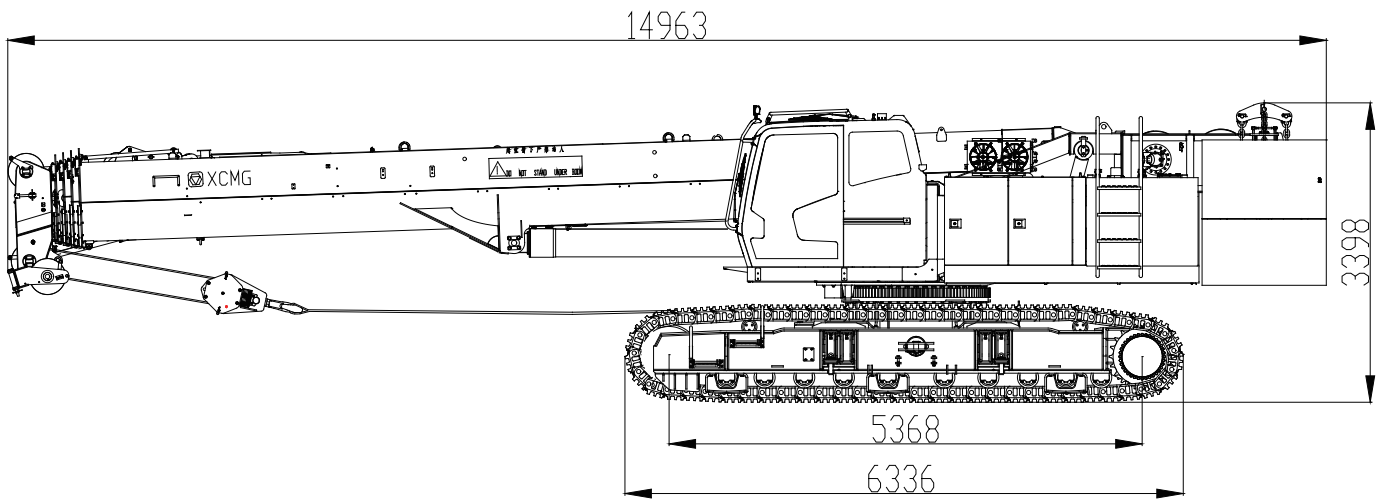
▲ Service in Africa

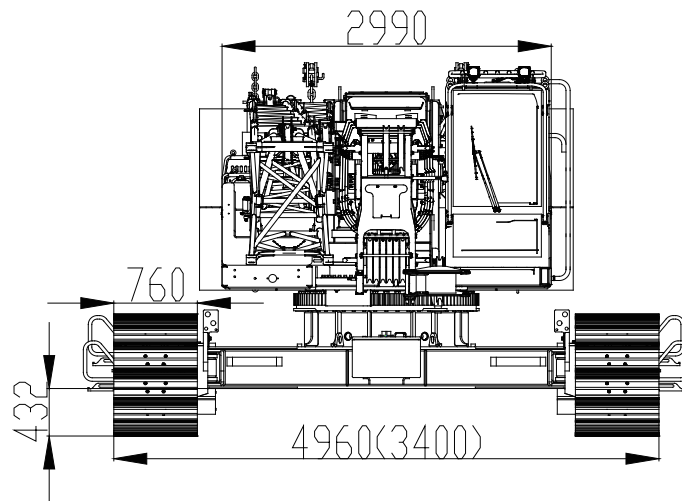
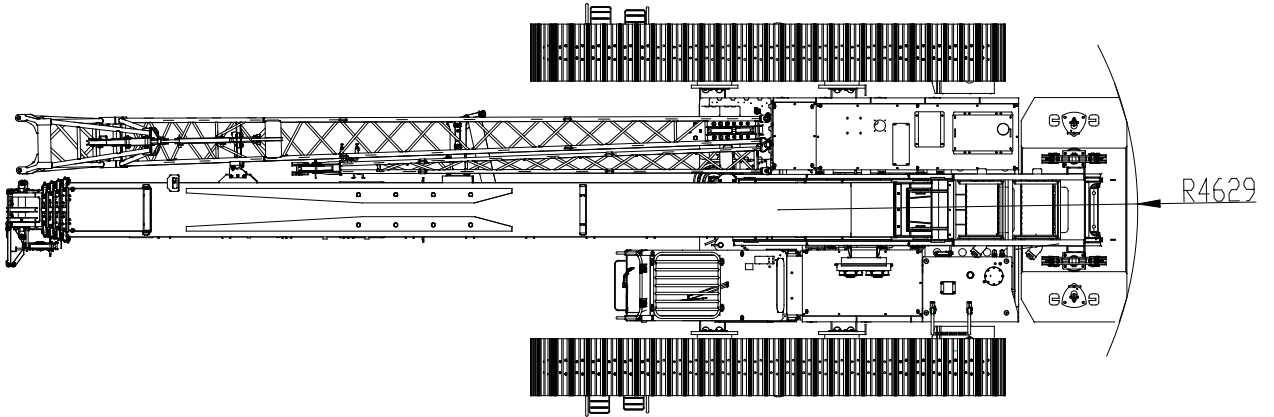
# CONTENTS

Product highlight .....	07
Dimension parameters .....	10
Technical specifications .....	12
Main technical parameters .....	15
Operation modes and lifting performances .....	16
Dimension of transported components .....	22
Symbols .....	23



# Dimension parameters





# Technical specifications



## Engine

- Cummins engine B6.7, meeting EU Stage V emission standard.
- Rated power/speed: 209kW/2200rpm.
- It has features of compact structure, small volume, light weight, high output power, low oil consumption, less pollution, reliable work and long service life, the engine can satisfy the demanding working conditions for telescopic crawler cranes.
- Oil tank capacity: 440L



## Hydraulic system

- Dual-variable pump load-sensing electro-hydraulic control system. Advanced electro-hydraulic proportional control technology is adopted for main movements of the crane, with good fine motion performance.
- Specially designed slewing buffer circuit, the start and stop of slewing movement is smooth and soft, meeting the requirements of fine lifting operation.
- Key components are from international first-line brands, with high reliability.



## Electrical system

- WIKA (Hirschmann) integrated control system, composed of engine control, safety control, pilot control, load moment indicator control, auxiliary function control, etc.
- The control system has functions of main boom arbitrary extension/retraction, virtual wall and remote management (optional). It is intelligent and has high safety under extreme working conditions. CAN-bus transmission and display interface port state query (monitoring all bus sensors) make troubleshooting much easier. Spring-loaded terminal and heavy-duty connector are used to improve the maintenance convenience

Battery model	Qty	Total rated voltage	Total rated capacity
6-QAW-180D	2	24V	6



## Turntable

- Turntable is formed by main structure and two side panels, welded by high-strength steel plate. This structure has strong bending and torsion resistance, with good stability. At the same time, the space of turntable is very large, convenient for crane repair and maintenance. Turntable is connected to undercarriage through slewing bearing.
- Many important parts are installed on turntable, such as operator's cab, main and auxiliary hoist winches, engine, turntable counterweight and boom system.



## Operator's cab

- The cab is steel frame structure, all glass are armored glass, with adjustable seat, spacious and comfortable.
- It is equipped with ergonomic designed instruments and controls, air conditioner (heating and cooling), sound equipment and closed-circuit monitoring system.
- When the crane is in operation, the cab can be tilted upwards to widen the field of vision for easier operation



## Slewing system

- Slewing system is arranged at the front part of turntable, driven by hydraulic motor, with hydraulic buffering and free sliding functions to ensure the safety of operation.
- The reducer is set with normally-closed disc brake, reliable in work and easy for maintenance.
- Slewing bearing: single-row four-points contact ball slewing bearing, its bearing capacity is very strong which can ensure a safe and stable 360° slewing.

## Hoisting system

- Hydraulic control speed regulation, the planetary gear reducer is driven by hydraulic motor, with built-in normally closed brake, balance valve, rope groove drum;
- The operation is independent from auxiliary winch. Rope end is directly installed in wedge socket.
- Hydraulic control speed regulation, planetary gear reducer is driven by hydraulic motor, with built-in normally closed brake, balance valve, rope groove drum;
- Equipped with a quick-assembly structure.

Main hoisting system	Diameter of wire rope	18 mm
	Rated singleline pull	5.9 t
	Wire rope length	230 m
Auxiliary hoisting system	Diameter of wire rope	18 mm
	Rated singleline pull	5.9 t
	Wire rope length	150 m

## Boom system

- Main boom: five sections, U-shaped cross section, cylindrical structure. Main boom length: 12m ~ 46.5m.
- Fixed jib: lattice structure, fixed jib installation angle: 0° , 15° and 30° . Fixed jib length: 9.5m/16m.

## Travel system

- It includes track beam, track roller, drive sprocket, idler, carrier roller and track shoe.
- Track frame is box type structure, connected with car-body.
- Two track frames are symmetrically distributed. The rollers and track shoes are all made of high strength alloy cast steel.
- Crawler travel unit has built-in planetary reducer, driven by axial piston variable displacement motor. The reducer is set with hydraulic release travel brake, safe and reliable.
- Two travel systems can be operated synchronously or separately to realize straight travel and turning.
- Adopt crawler shoes which are especially used for excavators, more suitable for traveling on soft ground.
- Track rollers and carrier rollers have self-lubricating function, free of maintenance.

## Counterweight

- Turntable counterweight has three combinations: 7.5t, 12t and 19.5t, and independent load charts corresponding to different counterweight combinations are provided to meet different purchase and lifting requirements.
- Self-assembly device is configured for turntable counterweight to achieve turntable counterweight self assembly and disassembly.
- Turntable counterweight combinations:

No.	Weight of turntable counterweight (t)	Undercarriage counterweight (t)	Combination type of counterweight (t)
1	12	0	12+0
2	12	7.5	12+7.5
3	19.5	/	12+7.5

## Hook block

■ Hook block configuration:

Name	Weight (t)	Number of pulleys (pc)
60t hook (optional)	0.57t	7
50t hook	0.49t	5
35t hook (optional)	0.33t	3
25t hook (optional)	0.23t	1

## Safety device

- Safety devices include: LMI, main/auxiliary winch rope over-winding prevention device, main/auxiliary winch rope over-releasing prevention device, main boom luffing ratchet locking device, boom angle limiter, height mark lamp, anemometer, buzzer and warning lamp, emergency stop, automatic fault diagnosis system, black box, etc.

# Main technical parameters

	Item	Unit	Parameters
Lifting performance parameters	Main boom max. rated lifting capacity	t	60
	Max. rated lifting moment	kN·m	2205
	Fixed jib max. rated lifting capacity	t	5
	Main boom length	m	12 ~ 46.5
	Fixed jib length	m	9.5/16
	Max. main boom and jib combination length	m	62.5 (46.5+16)
Working speeds	Main hoisting system	m/min	130
	Auxiliary hoisting system	m/min	130
	Slewing speed	r/min	0 ~ 1.9
	Travel speed	km/h	0 ~ 2.4
Power parameters	Model	/	Cummins B6.7
	Rated power/revolution speed	kW/rpm	209/2200
	Emission standard	/	EU Stage V
Weight and dimension parameters	Weight of complete crane	t	68.4
	Outline dimension	mm	14613×4960(3400)×3398
	Crawler shoe width	mm	760
	Max. weight of single-piece in transport state	t	30.6
	Max. dimension of single-piece in transport state (L×W×H)	mm	14613×2990×2960
Other parameters	Wire rope diameter (main and aux. hoisting ropes)	mm	φ18
	Single line pull (main and aux. hoisting ropes)	t	5.9
	Counterweight weight	t	19.5
	Grade ability	%	45
	Ground pressure	Mpa	0.08
	Slewing radius	mm	4500

# Operation modes and lifting performances



**T: Main boom**

Main boom length: 12 ~ 46.5m

**TK: Main boom + boom end single pulley**

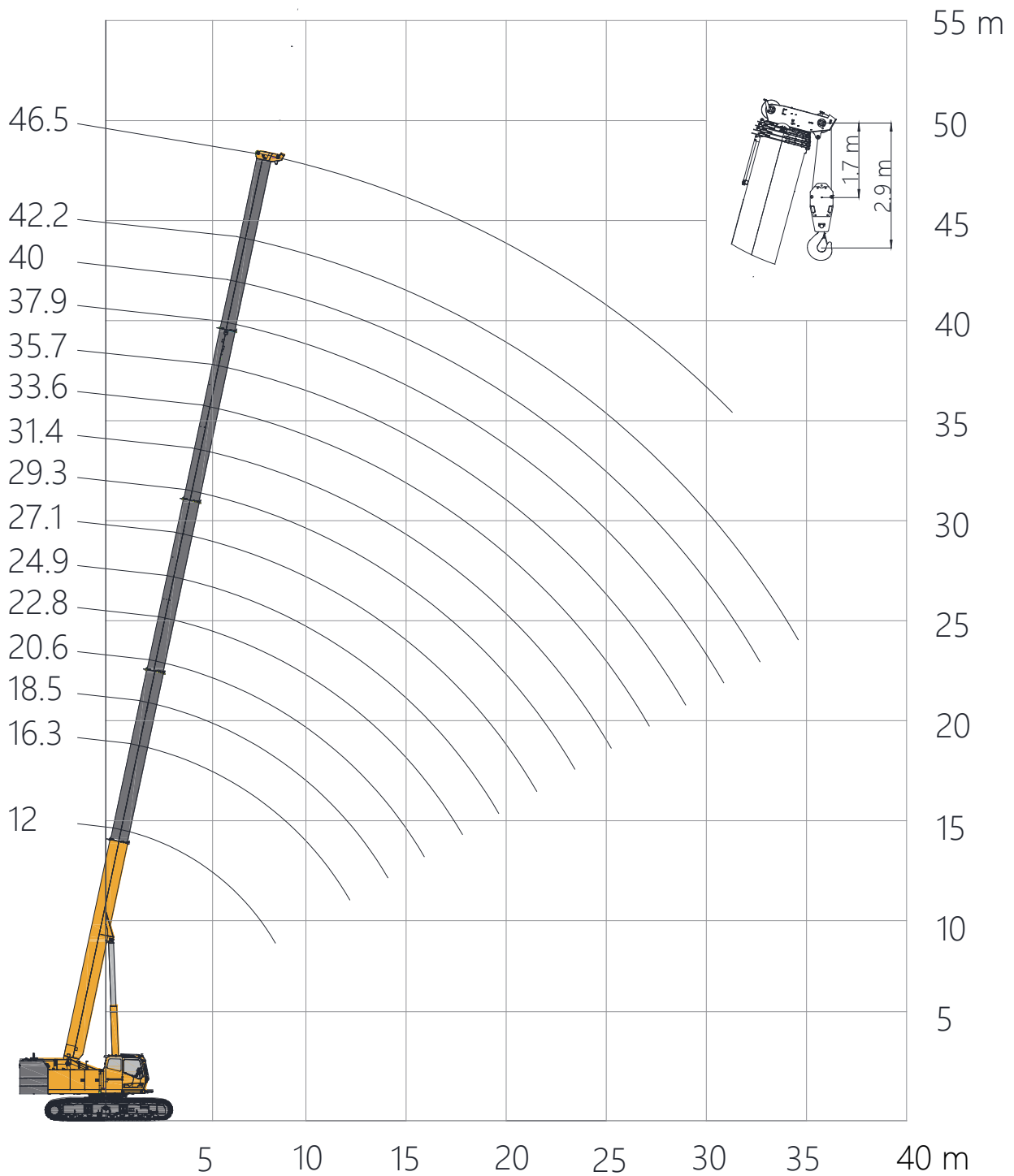
Main boom length: 12 ~ 46.5m

**TJ: Main boom + fixed jib**

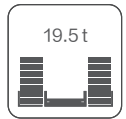
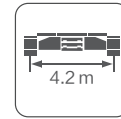
Main boom length: 12 ~ 46.5m  
Fixed jib length: 9.5m/16m


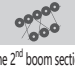
# HB

Main boom operation mode



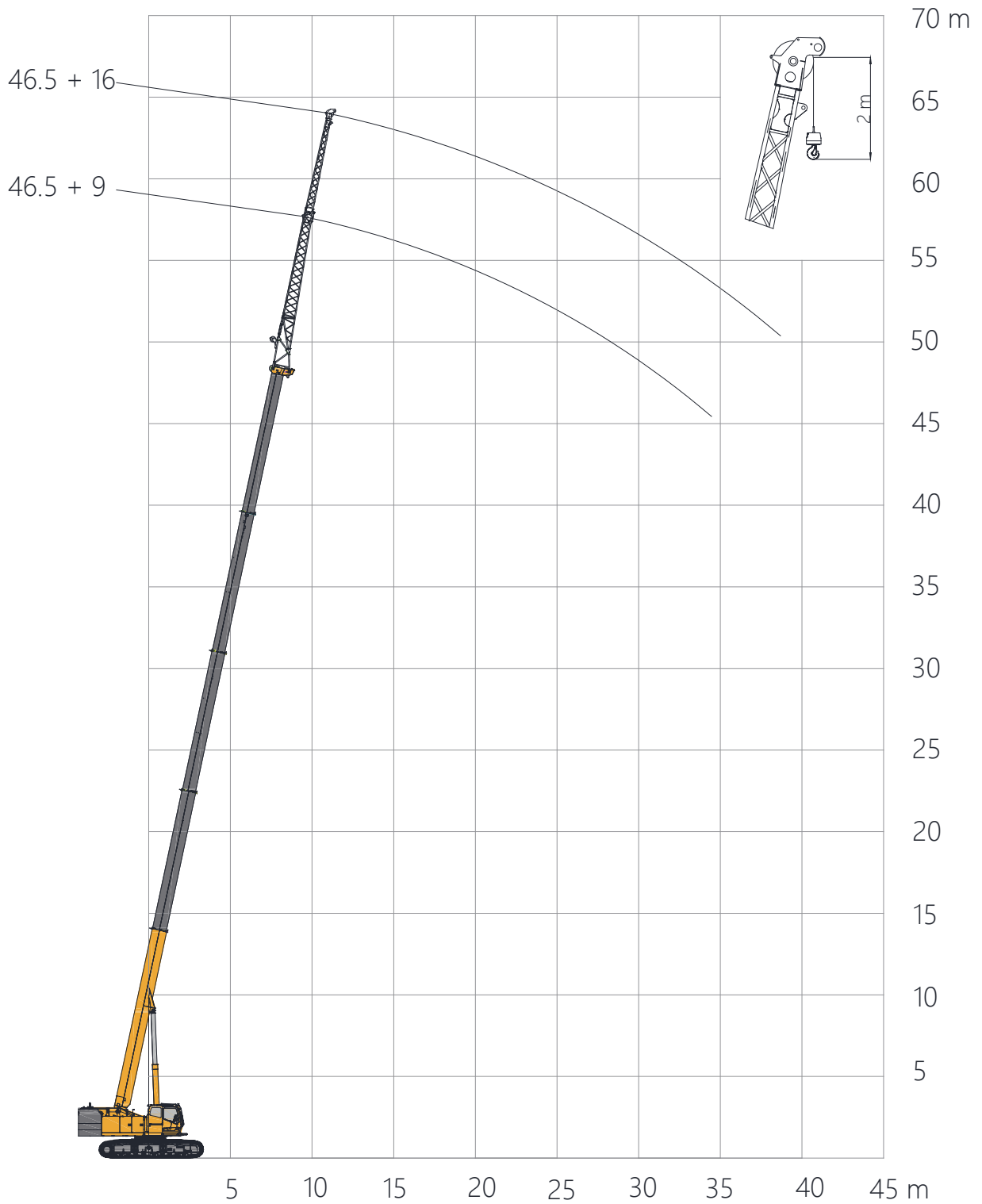
## Main boom: 12~46.5 m



	12	16.3	18.5	20.6	22.8	24.9	27.1	29.3	31.4	33.6	35.7	37.9	40	42.2	46.5
	60														
3.5	55.0	50.6													
4	51.5	50.6	30.2	37.0	29.5										
4.5	49.5	48.4	30.2	37.0	29.5	27.0									
5	45	45.4	30.2	36.5	29.5	27.0	29.5	24.6							
6	37.2	36.6	30.2	34.3	29.5	25.3	29.5	24.6	18.2	25.0					
7	29.5	29.4	30.2	28.0	29.1	23.7	27.0	24.6	18.2	23.5	18.3	12.5			
8	23.4	23.3	25.5	23.2	24.5	22.0	22.9	23.6	17.1	21.8	17.4	12.5	16.5	12.0	
9	19.3	19.0	21.1	18.9	20.6	20.4	19.7	20.5	15.4	19.2	16.3	12.5	15.8	11.6	11.2
10		15.8	17.8	15.7	17.3	18.6	17.0	18.0	14.3	16.8	15.2	11.9	15.0	11.3	10.5
12		11.3	13.1	11.2	12.7	14.0	12.4	13.5	12.2	13.1	12.9	10.5	12.9	10.4	10.0
14			10.2	8.2	9.7	10.9	9.4	10.4	10.6	10.1	10.9	9.0	10.3	9.5	9.5
16				6.2	7.5	8.7	7.2	8.3	9.1	7.9	8.7	7.9	8.3	8.4	8.2
18					6.0	7.0	5.6	6.6	7.5	6.3	7.1	7.5	6.8	7.4	6.8
20						5.9	4.4	5.3	6.2	5.0	5.8	6.5	5.5	6.1	5.7
22							3.5	4.4	5.2	4.0	4.8	5.4	4.5	5.1	4.8
24									3.6	4.4	3.2	3.9	4.6	3.6	4.2
26									2.8	3.7	2.6	3.3	3.9	2.9	3.5
28											2.0	2.7	3.3	2.4	3.0
30												2.3	2.9	1.9	2.4
32													1.7	2.5	1.5
34															1.7
36															1.3
	12	10	8	8	6	6	6	5	5	5	4	4	4	3	3
The 2 <sup>nd</sup> boom section	0%	50%	0%	100%	50%	0%	100%	50%	0%	100%	50%	0%	100%	50%	100%
The 3 <sup>rd</sup> boom section	0%	0%	25%	0%	25%	50%	25%	50%	75%	50%	75%	100%	75%	100%	100%
The 4 <sup>th</sup> boom section	0%	0%	25%	0%	25%	50%	25%	50%	75%	50%	75%	100%	75%	100%	100%
The 5 <sup>th</sup> boom section	0%	0%	25%	0%	25%	50%	25%	50%	75%	50%	75%	100%	75%	100%	100%

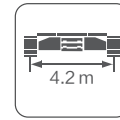
# HF



Fixed jib operation mode










# Main boom 46.5m

## Fixed jib: 9.5/16m



	46.5+9.5			46.5+16		
	0°	15°	30°	0°	15°	30°
80°	5	3.5	3.0	3.0	2.5	1.8
78°	5	3.5	3.0	3.0	2.4	1.7
75°	4.8	3.4	2.8	2.9	2.2	1.5
72°	4.5	3.2	2.6	2.8	2.0	1.4
70°	4.2	3.0	2.5	2.6	1.8	1.3
65°	3.4	2.8	2.3	2.4	1.6	1.3
60°	2.3	2.2	2.1	1.5	1.4	1.2
55°	1.5	1.5	1.5	0.9	0.8	0.9
50°	1.1	1.0	1.0	0.5	0.4	0.5
	1					

# Symbols

	<p>Longest main boom</p>		<p>Turntable counterweight</p>
	<p>Working radius</p>		<p>Rated lifting capacity</p>
	<p>Parts of line</p>		<p>Track width</p>
	<p>360° slewing</p>		

# XGTC60– crawler crane

Due to the need for continuous product improvement, we reserve the right to make changes to product models, parameters and configurations. For the latest technical information of the product, please consult your sales manager.

The pictures are for reference only, and the specific product is subject to the actual product. The product in the picture may not be standard configuration, and some components may need to be purchased separately.



## XUZHOU CONSTRUCTION MACHINERY GROUP IMP.& EXP. CO.. LTD

Address: No.1, Tuolanshan Road,Xuzhou  
Economic Developing Zone, jiangsu, China 221004  
Tel:+ 86(0)516 8773 9703  
Fax:+ 86(0) 516 8773 9230  
E-Mail: europe@xcmg.com



XCMG CRANE



XCMGCRANE.0FFICIAL



This document does not constitute a dry contract. Due to the need for continuous product improvement,we reserve the right to make changes to product models, parameters,and configurations without prior notice. The pictures are for reference only,and the specific product is subject to the actual product.The product in the picture may not be standard configuration, and some components may need to be purchased separately.Applying for a license plate and driving on the road must comply with local regulations.