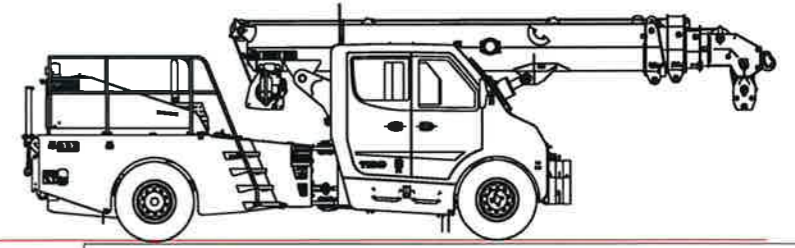
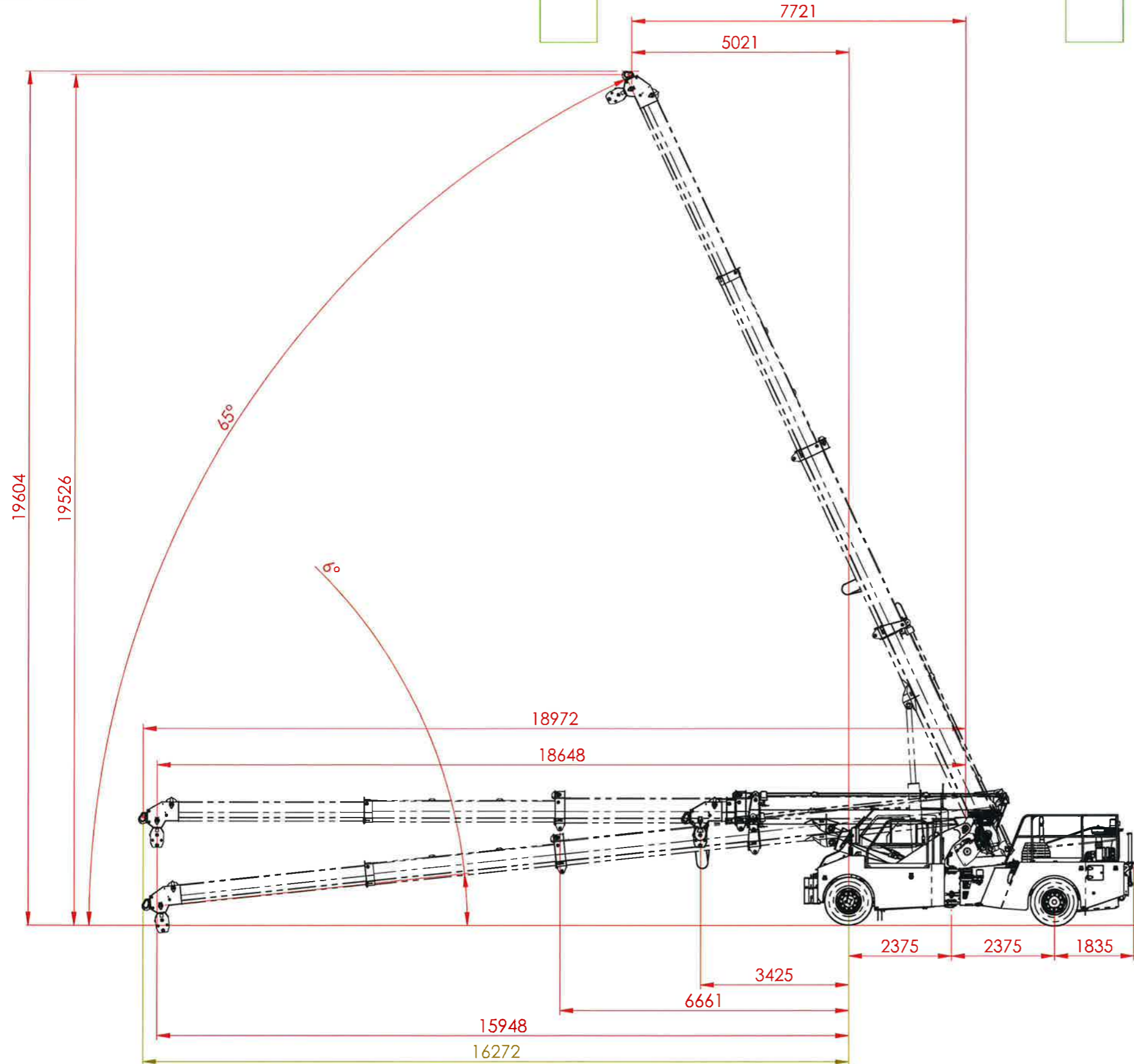
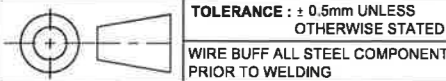


IF IN DOUBT PLEASE ASK



| | | | | | | | | | | |
|--|----|----|----|----|----|----|--|--|--|--|
| PART NUMBER # 313-1001-BROCHURE | | | | | | | | | | |
| DESCRIPTION: COMPLETE ASSY | | | | | | | | | | |
| QTY: X | | | | | | | | | | |
| MATERIAL: X | | | | | | | | | | |
| PC | PR | LC | MA | SF | WD | \$ | | | | |



TOLERANCE : ± 0.5mm UNLESS OTHERWISE STATED
WIRE BUFF ALL STEEL COMPONENTS PRIOR TO WELDING

WELDING: ALL INFORMATION SHALL COMPLY WITH NZ/AS 1554:2000 PT 1 CATEGORY SP UNLESS OTHERWISE STATED AND SHALL BE WELDED TO A QUALIFIED PROCEDURE, BY A WELDER QUALIFIED FOR THE APPROPRIATE POSITION AND SUPERVISED BY A WELDING SUPERVISOR

THIS DRAWING IS © COPYRIGHT AND IS THE PROPERTY OF TIDD ROSS TODD LTD. IT IS FURNISHED TO YOU FOR CONFIDENTIAL INFORMATION PURPOSES ONLY AND IS NOT TO BE DISCLOSED TO ANYONE ELSE OR USED FOR MANUFACTURING PURPOSES WITHOUT THE EXPRESS WRITTEN PERMISSION OF TIDD ROSS TODD LTD.

| REV | DATE | COMMENT | NAME |
|-----|------|---------|------|
| | | | |
| | | | |
| | | | |

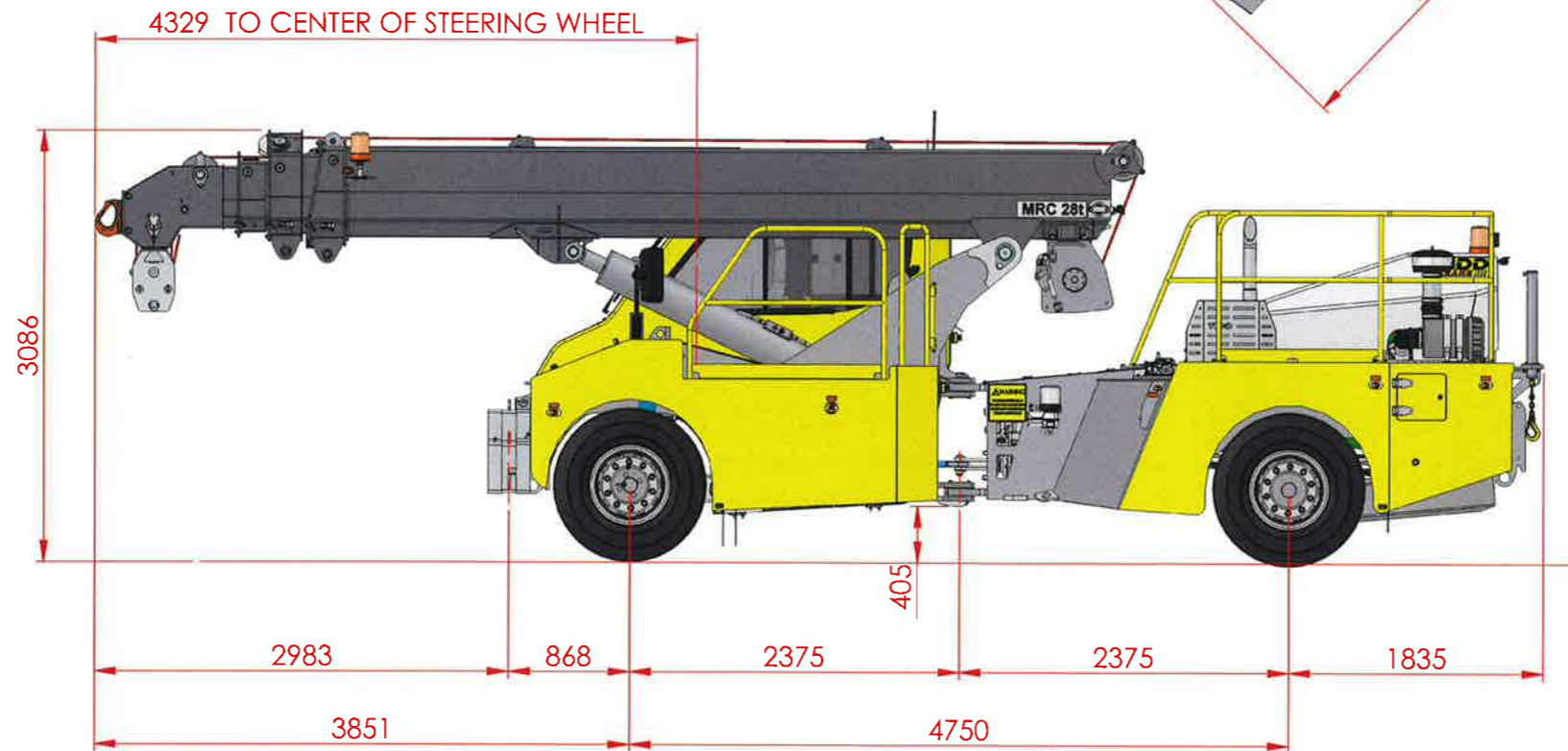
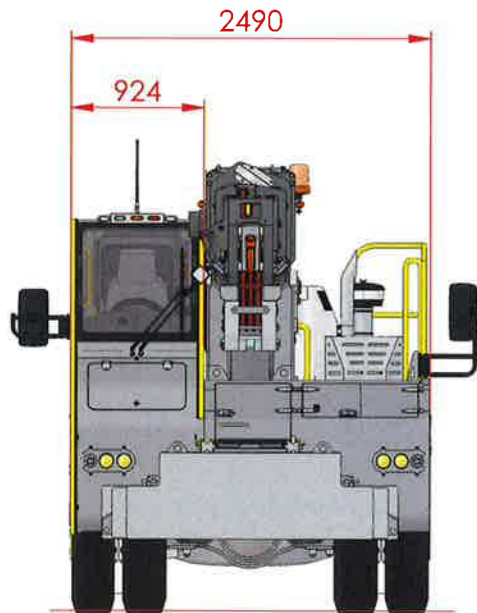
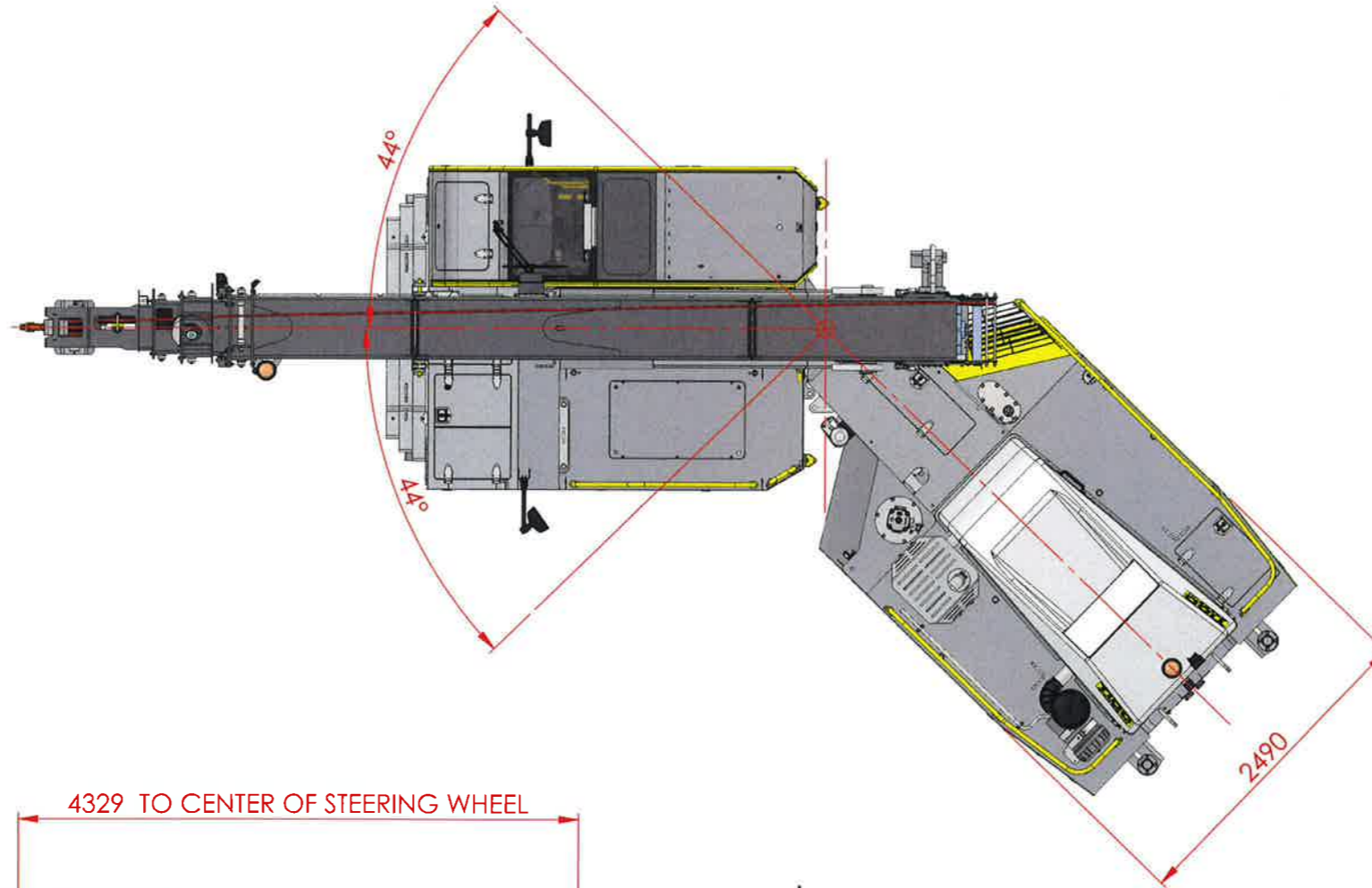
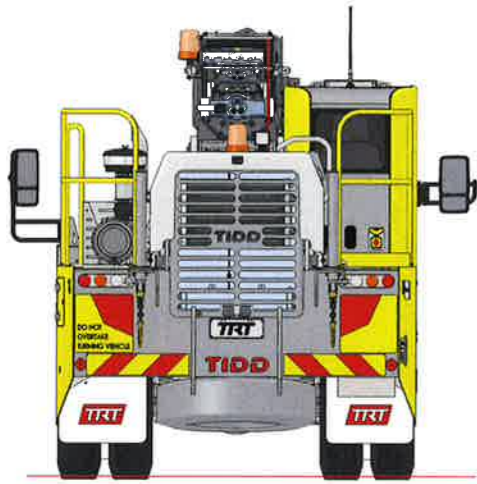


48 Maui Street
Hamilton
New Zealand
Phone +64 7 849 4839
Fax +64 7 849 3628
Email : trt@trt.co.nz
ISO 9001

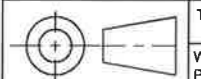
| | NAME | DATE | TITLE: |
|--------|------|------------|---|
| DRAWN | RJC | 01/05/2019 | COMPLETE ASSY ~ GENERAL ASSEMBLY (G.A) |
| CHK'D | - | - | |
| APPV'D | - | - | |

| | | |
|-------------------------------|-------------------|----------------------------|
| SHEET 1 OF 2 | DWG NO. | REVISION |
| DO NOT SCALE DRAWINGS IN mm's | STATUS - M | SCALE:1:100 |
| | | 313-1001-BROCHURE A |

IF IN DOUBT PLEASE ASK



TYRES = 12.00 R20 20 PLY
ROAD SPEED 80km/hr



TOLERANCE : ± 0.5mm UNLESS OTHERWISE STATED
WIRE BUFF ALL STEEL COMPONENTS PRIOR TO WELDING

WELDING: ALL INFORMATION SHALL COMPLY WITH NZ/AS 1554:2000 PT 1 CATEGORY SP UNLESS OTHERWISE STATED AND SHALL BE WELDED TO A QUALIFIED PROCEDURE, BY A WELDER QUALIFIED FOR THE APPROPRIATE POSITION AND SUPERVISED BY A WELDING SUPERVISOR

THIS DRAWING IS © COPYRIGHT AND IS THE PROPERTY OF TIDD ROSS TODD LTD.
IT IS FURNISHED TO YOU FOR CONFIDENTIAL INFORMATION PURPOSES ONLY AND IS NOT TO BE DISCLOSED TO ANYONE ELSE OR USED FOR MANUFACTURING PURPOSES WITHOUT THE EXPRESS WRITTEN PERMISSION OF TIDD ROSS TODD LTD.

| REV | DATE | COMMENT | NAME |
|-----|------|---------|------|
| | | | |



48 Maui Street
Hamilton
New Zealand
Phone +64 7 849 4839
Fax +64 7 849 3628
Email : trt@trt.co.nz
ISO 9001

| | NAME | DATE |
|--------|------|------------|
| DRAWN | RJC | 01/05/2019 |
| CHK'D | - | - |
| APPV'D | - | - |

| TITLE: | DWG NO. | REVISION |
|--|---------------------|----------|
| COMPLETE ASSY ~ GENERAL ASSEMBLY (G.A) | 313-1001-BROCHURE A | |
| SHEET 2 OF 2 | SCALE:1:50 | |